

35  
years  
OF ADMITTED  
EXCELLENCE  
**UNION**



This year, UNION celebrates its 35th anniversary as a recognized market leader in the manufacture of doors and furniture. The history of UNION is a great example of the successful development of Russian business, based on European experience, modern technologies and a firm commitment to impeccable quality. The company constantly strives for excellence, innovation and development, introduces new solutions, outpacing trends in design and service, which makes it a unique player in the market. The concept of "Doors and furniture in the same style", which was developed in 2020 by Italian architects upon UNION request, provides a new integrated approach to interior design. This solution significantly helps architects and designers in their work and guarantees the stylistic unity of all elements of the interior.



VIDEO ABOUT  
PRODUCTION

#### \ Modern doors

FILO-60	20
UNIFLEX-3D	36
UNIX-60	38
LAGO-60	40
SLIM	46
SIGMA	50
TONDA	52
PIVOT	54

#### \ Traditional doors

TREND	56
LEVEL	57
ALDA	58
STELLA	60
CORDA	61
GRAND	62
PRIMA	63

#### \ Sliding doors and partitions

SLIDER	64
MAGIC	65
STRATUS-SLIM	66
STRATUS-SIGMA	76
STRATUS-LAGO	78
STRATUS-FILO	82
LIBRO	84
TRANSFORMER	85
WALLSTREET	86

#### \ Wall panels

COVER	88
-------	----

#### \ Wardrobes and storage systems

VIRGOLA	94
LUMINA	95
ALTO	96
MONTBLANC	102
FORMINA	104
LAGUNA	110
LUCE	114

#### \ Mirrors

ALBA	115
------	-----

#### \ Dressers and showcases

MIRAGE	118
MATEO	120
MISTRAL	122
MOSAICO	123
VITRUM	124

#### \ Dining and coffee tables

MILAN	126
ALMA	128
VERSUS	129

#### \ Modular sofas

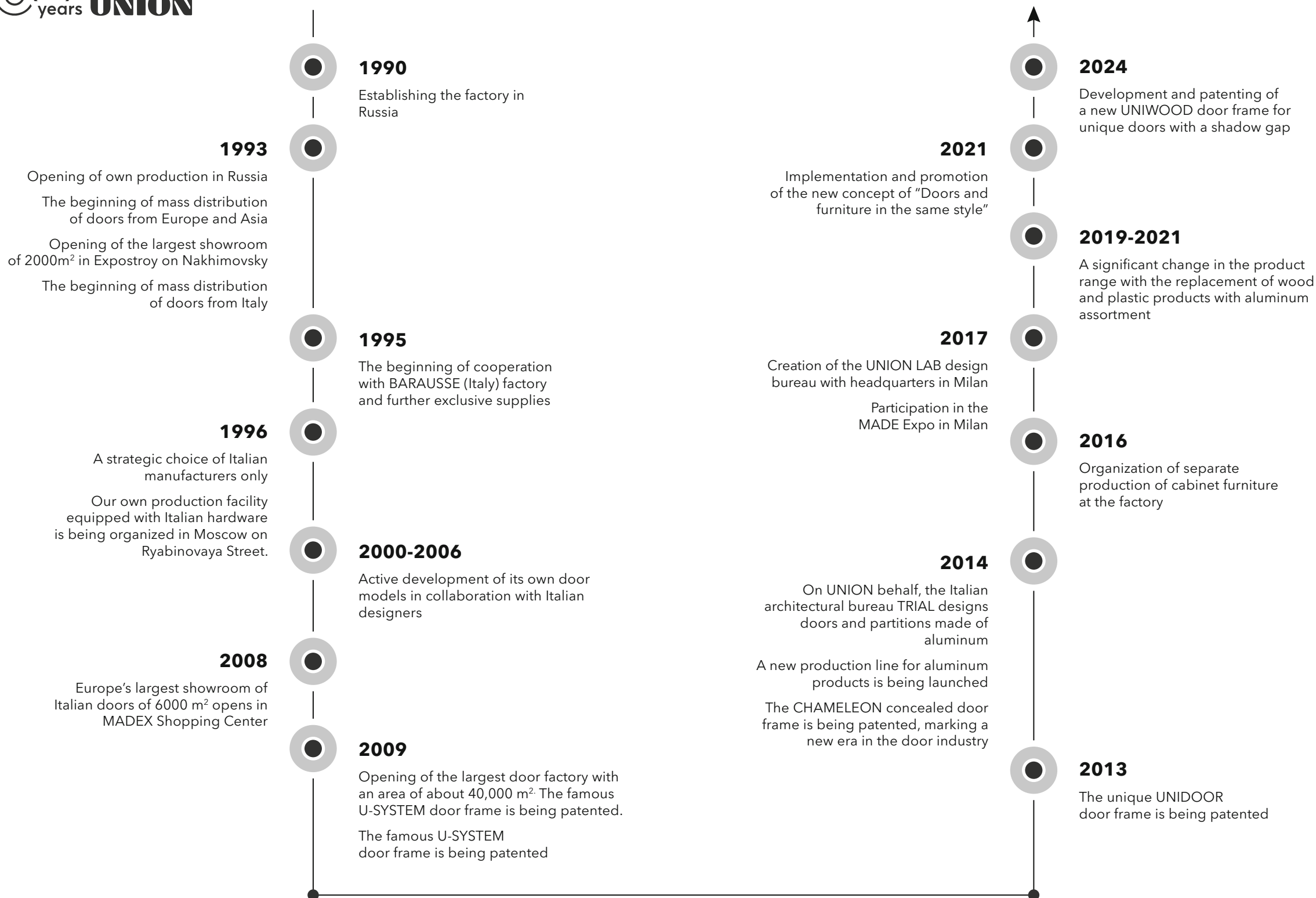
PORTOFINO	130
-----------	-----

#### \ Skirting boards

\ UNION CONTRACT	134
------------------	-----

\ Fittings and accessories	136
----------------------------	-----

\ Materials and finishes	138
--------------------------	-----





## U **UNION**

DOORS · FURNITURE

UNION's production facility was established according to the design of Italian architects based on the latest achievements in the Italian furniture industry. Our advanced production complex operates on more than 40,000 m<sup>2</sup> and is equipped with modern Italian and German hardware which allows us to fulfill orders of any complexity in the required volume.

Specializing in the implementation of comprehensive interior design solutions, UNION has achieved the highest level of development thanks to its knowledge of Italian door and furniture craft traditions, the use of European experience, technology and equipment, as well as customer needs understanding and the constant products and services improvement.

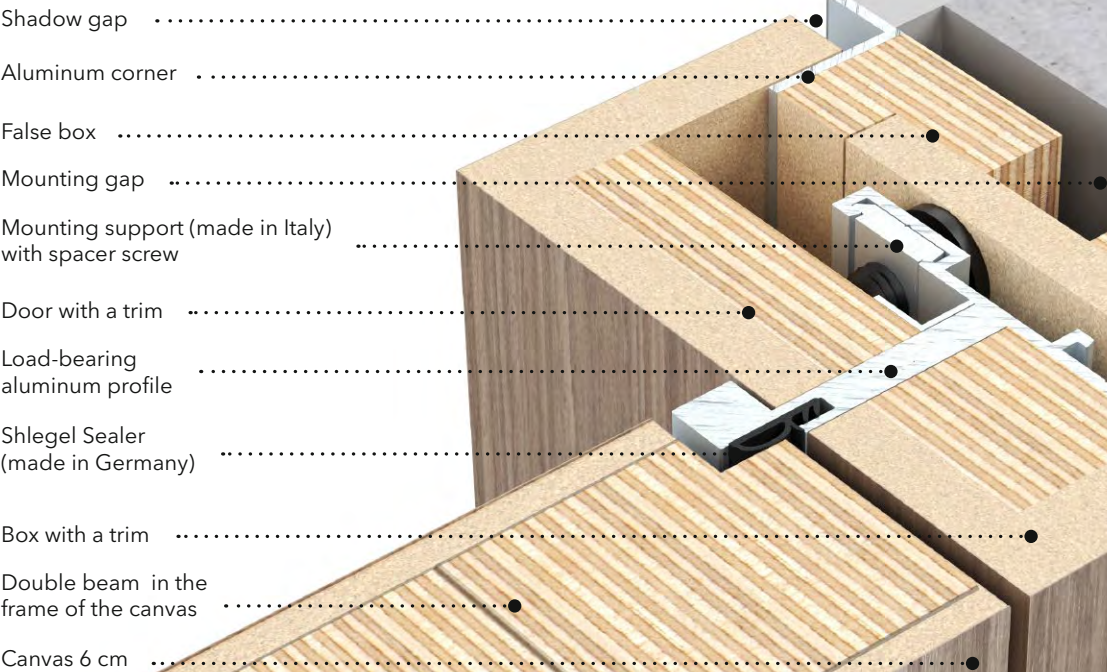


# DOOR WITH SHADOW GAP

## UNIWOOD door frame (UNION patent)

The **UNION** company, together with the Italian studio **DECOMA DESIGN**, presents an innovative door design with a **SHADOW GAP** with the UNIWOOD door frame.

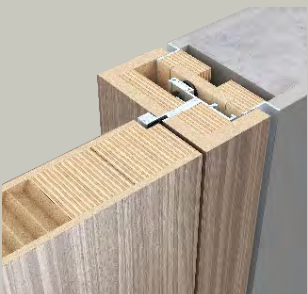
The new generation UNIWOOD coplanar door frame promises to be a real opening for architects and designers, creating harmony between aesthetics and functionality within the interior.



Advantages of the door with a **SHADOW GAP** with the UNIWOOD door frame

- › shadow gap is a hit of the season in design;
- › wall decoration is simplified due to lighthouses -aluminum corners;
- › uniform height on both sides of the door;
- › convenience and durability of installation through an aluminum profile;
- › reliable fastening of hinges through an aluminum profile;
- › design is an innovation due to a single plane with a wall.

Mounting options for the UNIWOOD door frame relative to the wall:



Door panel, trim, door frame and wall in the same plane



Facing the slope with drywall



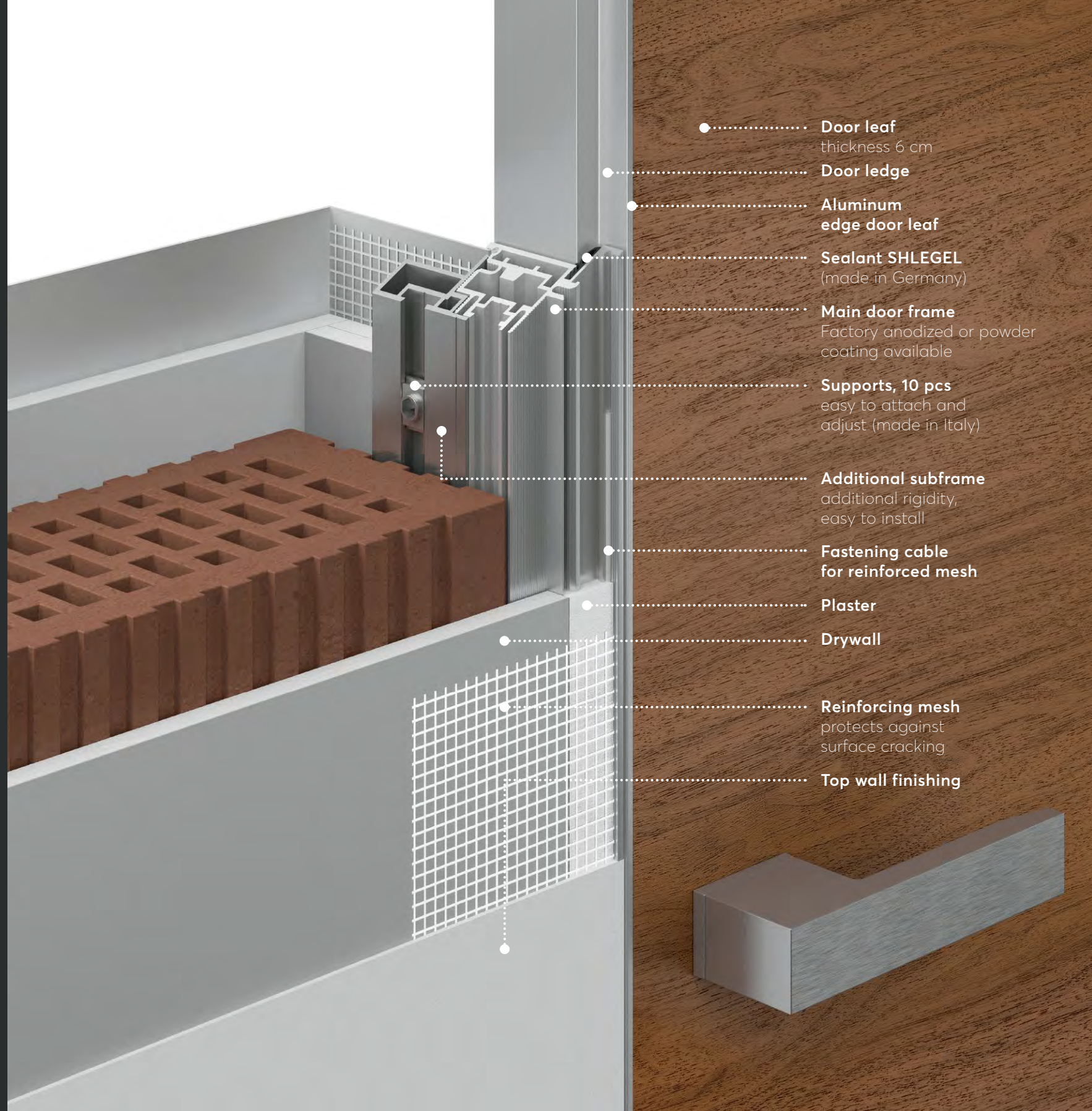
Door panel in the center of the opening



The box is extended relative to the wall

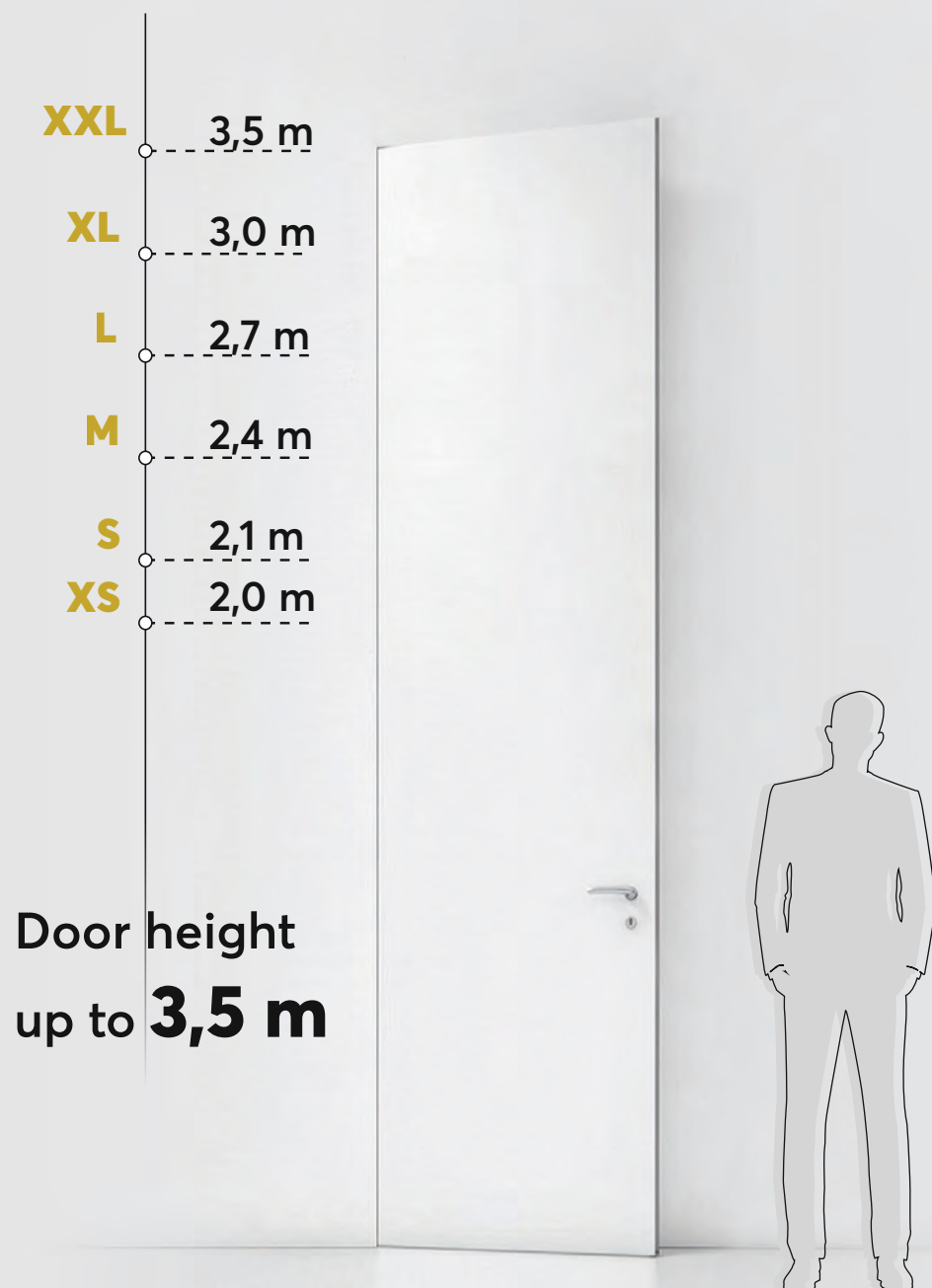
# Concealed door frame **INVISIBLE**

UNION patent



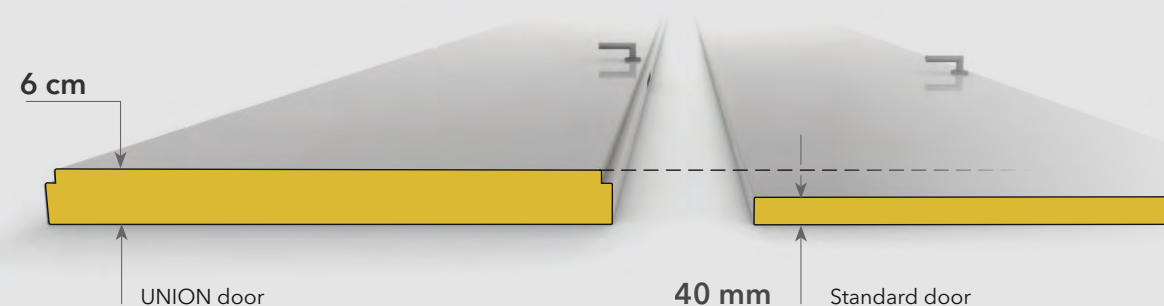
- ..... **Door leaf**  
thickness 6 cm
- ..... **Door ledge**
- ..... **Aluminum edge door leaf**
- ..... **Sealant SHLEGEL**  
(made in Germany)
- ..... **Main door frame**  
Factory anodized or powder coating available
- ..... **Supports, 10 pcs**  
easy to attach and adjust (made in Italy)
- ..... **Additional subframe**  
additional rigidity, easy to install
- ..... **Fastening cable for reinforced mesh**
- ..... **Plaster**
- ..... **Drywall**
- ..... **Reinforcing mesh**  
protects against surface cracking
- ..... **Top wall finishing**

# SIZE MATTERS



Thickness of UNION door  
up to **6 cm**

It's **50%** thicker  
than an standard door



# ADVANTAGES OF ITALIAN TECHNOLOGIES



01

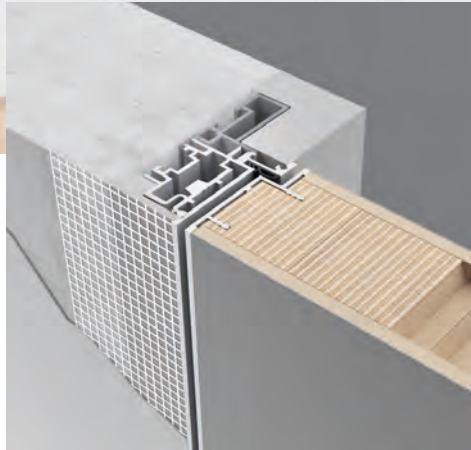
## Always in stock "Invisible" doors ready for painting

Always in stock, ready for quick shipment, unique FILO-60, Fondo doors with 60mm thickness in standard sizes 60/70/80 x 200/210/240 cm.

02

## Important advantage - door leaf thickness

Standard door leaf thickness of other manufacturers does not exceed 4 cm. The leaf thickness of UNION doors is 6 cm! Such doors have better sound insulation and durability. Besides they look more prestigious.



03

## Hidden frame with false box

Concealed INVISIBLE door frame is fully made of aluminum and it is reinforced by additional door frame - an additional secondary profile. That's the main difference between the constructions of UNION concealed door frames and any other standard concealed frames presented in the market. The rigid reliable construction is designed for long and intensive operation even for the heavy doors. Initially the frame is anodized in silver aluminum, but it also can be painted in a wall color or in any other color according to the factory catalogue.

04

## Height up to 3.5 meters

A modern trend, relevant for interiors made in various styles. High doors visually "raise" the ceiling, optically increasing the area and volume of the room. The reinforced construction of the door frame and door panel ensures durability and stability during long-term operation.



05

## Flush to wall

INVISIBLE door frame perfectly integrates into the wall and creates a single plane while opening the door "by pulling" and "by pushing". In addition, it can also be easily connected with the wall panels made of various materials - from wood to glass. In any case it always remains flush to the wall - the unity of the surface with the wall without protruding parts.





06

### Wall thickness

Thin walls made of special materials are used in the construction of some buildings. INVISIBLE frame is perfect for wall mounting from 6 cm thickness. The frame is installed in a thin wall without additional door frame and is fixed via frame profile.



07

### Delivery of the assembled frame

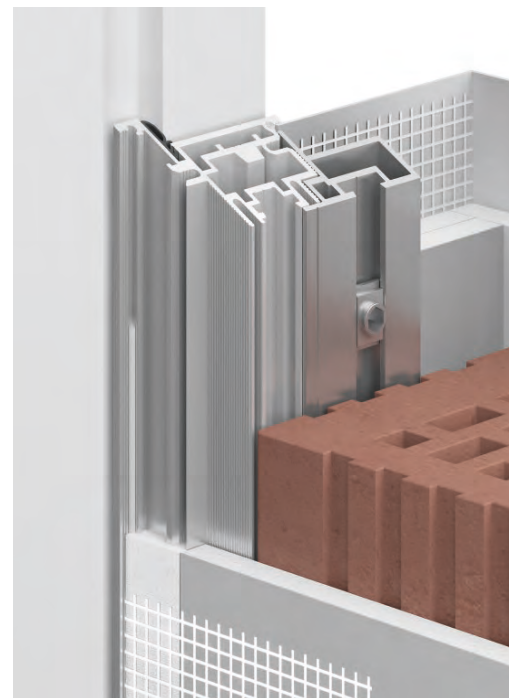
The INVISIBLE hidden frame can be delivered fully assembled. It means that the frame is assembled with fixed mounting bars ready to be installed in the doorway. The installers can only set it vertically and fix it to the slopes opening. Thus the installation becomes faster and easier.



08

### Aesthetic mounting

The INVISIBLE frame design allows you to create a joint with the tiles, the porcelain tiles or other materials directly tightly, without additional transitional elements and visible gaps. Such a technical solution is specifically provided for doors on hidden frame of both internal and external opening.



09

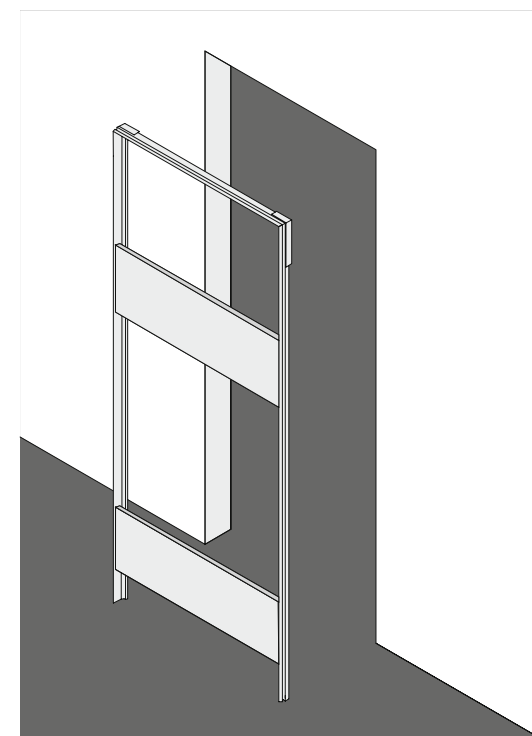
### Support

Longitudinal cuts are designed in the profile of the additional door frame into which the so-called supports are installed. This is a special fastening device that allows you to quickly adjust the position of the frame level during installation and then securely fasten the entire structure. This greatly speeds up and simplifies the installation process. At least 4 supports are installed in each vertical rack of the INVISIBLE door frame (two of them are always provided).

10

### Suitable for standard doorways

According to Russian Government standards, the door's width 60, 70, 80 and 90 cm are standard. As a rule, many builders prepare the doorways exactly in accordance with Government standards. UNION doors are designed so that their geometric dimensions fit into standard openings, which significantly reduces their cost.





11

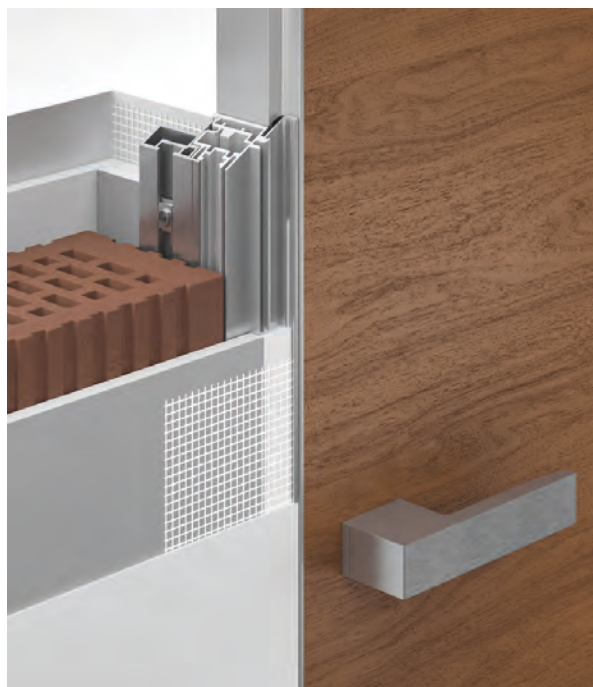
### Humidity resistance

Aluminum INVISIBLE door frame makes a door humidity resistant comparing to the doors with wood or MDF door frame. UNION doors are not exposed to humidity during the wet cleaning or at the wet floor. They can be used in rooms with high humidity without fear of getting wet of the supporting structure – the door frame.

12

### Fabricability

INVISIBLE hidden frame are supplied with a special supporting net along the whole aluminum frame perimeter. This is the important detail when a wall is plastered close to the frame and then painted. The net simplifies the plastering process and excludes the cracks of the wall surface.



13

### Solidity of finishing

There is a very interesting and trendy option in UNION – the possibility of factory polymer painting in the same color of all metal elements of the door structures. The solidity of finishing of aluminum tip edge, frame and handles create a unique aesthetic integrity and laconism.

14

### Rabbeted door

UNION produces the unique 6 cm doors with so called rabbet ledge. Sometimes we use the terms "doors with groove" or "framed-and-ledged doors" instead of "rabbeted doors". Thanks to the ledge, the door leaf connects better to the frame that increases the sound and heat insulations. Due to the ledge the door becomes flush at different door handing – "pull opening" and "push opening". The ledge also prevents the light penetration in another room.



15

### Aluminum - Low footprint

Aluminum is a natural, eco-friendly and safe material that is not exposed to the environment. Such materials as wooden board, MDF have a number of fundamental defects – they trigger and swell on wetting. There are the doors with PVC elements in a market. This material is very harmful for humans.

# FILO-60

INVISIBLE DOORS UNDER PAINTING



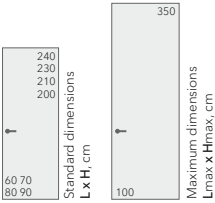
Concealed door in a classic interior



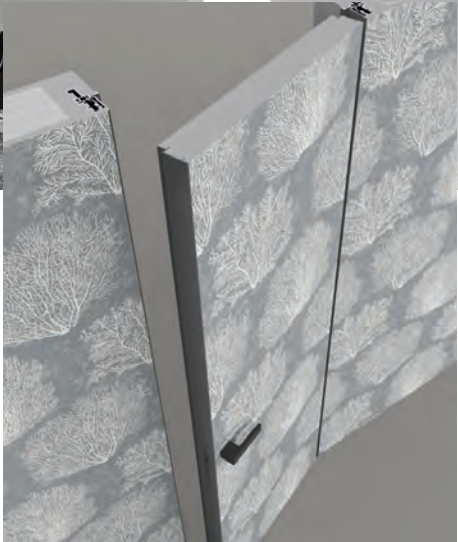
INVISIBLE frame



INVISIBLE Inverso frame



FILO-60, Piatto, L00 Fondo, AL09 Chrome Matt / INVISIBLE



Wallpapering the door and the wall together

L00

FONDO

Primer for painting

AL

ALUMINIUM

Anodizing and painting

# FILO-60

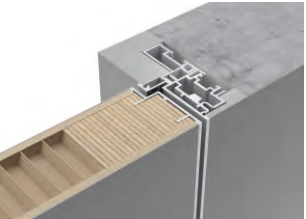
MATTE AND GLOSSY ENAMELS



FILO-60, Entry, L01 Bianco, AL08 Black / INVISIBLE



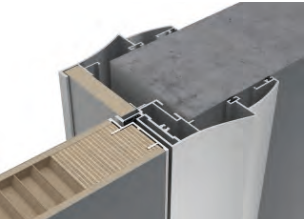
- L**  
LACCATO MATT  
Matt enamels
- HP**  
HPL  
Composite material
- V**  
VENEER NATURAL  
Natural veneer
- LG**  
LACCATO GLOSS  
Glossy enamels
- AL**  
ALUMINIUM  
Anodizing and painting



INVISIBLE frame



PLANAR frame



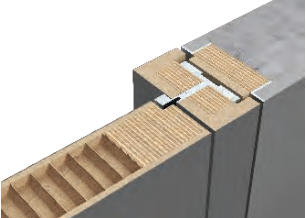
DECO frame



MAXI frame



UNIDOOR frame



UNIWOOD frame



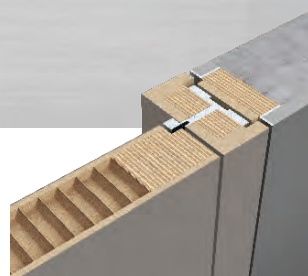
FILO-60, Piatto, LG12 Sabbia Gloss, AL09 Chrome Matt / INVISIBLE

# FILO-60

MATTE AND GLOSSY ENAMELS



FILO-60, Piatto, L11 Tortora, AL08 Black / UNIWOOD



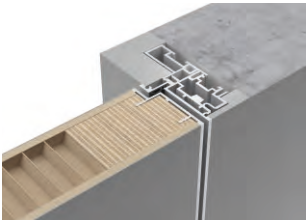
FILO-60, Alu, Piatto, L06 Grigio Seta, AL07 Dark Brown / PLANAR

# FILO-60

COMPOSITE DECORATIVE MATERIALPLANAR 



FILO-60, Alu, Piatto, HP03 Pietra Grafite, AL08 Black / INVISIBLE



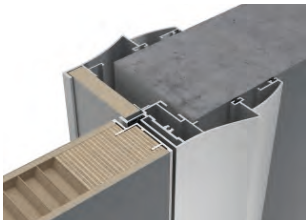
INVISIBLE frame



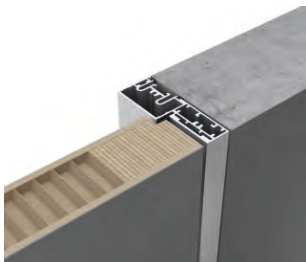
PLANAR frame without insert



PLANAR frame with insert



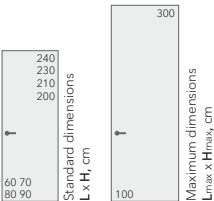
DECO frame



MAXI frame



Piatto



L

LACCATO MATT

Matt  
enamels

HP

HPL

Composite  
material

V

VENEER NATURAL

Natural  
veneer

LG

LACCATO GLOSS

Glossy  
enamels

AL

ALUMINIUM

Anodizing  
and painting



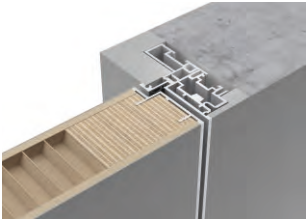
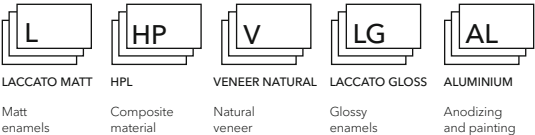
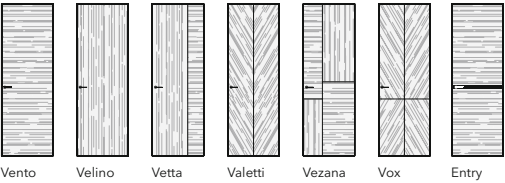
FILO-60, Piatto, HP15 Pietra Italiano, AL09 Chrome Mat / INVISIBLE

# FILO-60

NATURAL VENEER



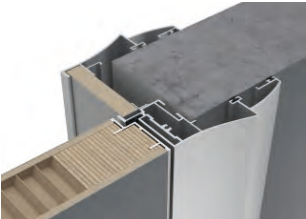
FILO-60, Alu, Vento, V10 Rovere Antico, AL08 Black / INVISIBLE



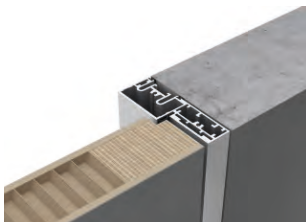
INVISIBLE frame



PLANAR frame



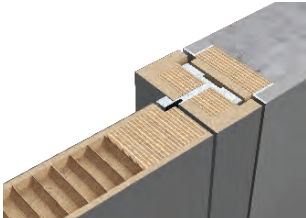
DECO frame



MAXI frame



UNIDOOR frame



UNIWOOD frame



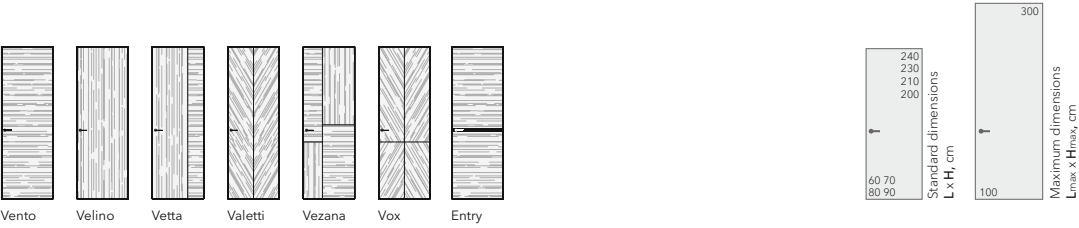
FILO-60, Alu, Vox, V28 Noce Nazionale, AL08 Black / INVISIBLE

# FILO-60

NATURAL VENEER



FILO-60, Alu, Entry, V16 Noce Canaletto, AL08 Black / INVISIBLE



L

LACCATO MATT

Matt enamels

HP

HPL

Composite material

V

VENEER NATURAL

Natural veneer

LG

LACCATO GLOSS

Glossy enamels

AL

ALUMINIUM

Anodizing and painting



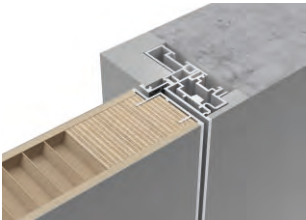
FILO-60, Alu, Valetti, V03 Ebano, AL08 Black / INVISIBLE

FILO-60

NATURAL VENEER



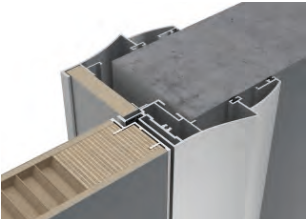
FILO-60, Alu, Vento, V16 Noce Canaletto, AL09 Chrome Matt / PLANAR ins.



INVISIBLE frame



PLANAR frame



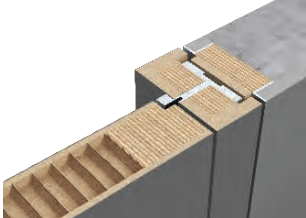
DECO frame



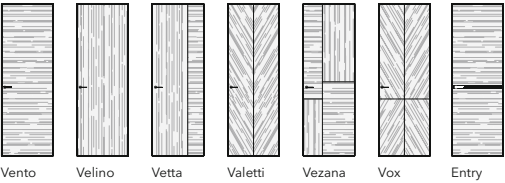
MAXI frame



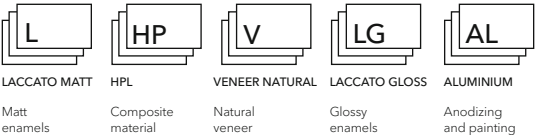
UNIDOOR frame



UNIWOOD frame



Vento Velino Vetta Valetti Vezana Vox Entry



LACCATO MATT HPL VENEER NATURAL LACCATO GLOSS ALUMINIUM  
Matt enamels Composite material Natural veneer Glossy enamels Anodizing and painting



FILO-60, Alu, Vento, V13 Rovere Cenere, AL08 Black / PLANAR

# DOOR WITH SHADOW GAP

UNIWOOD FRAME



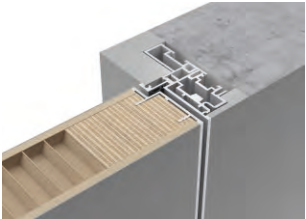
FILO-60, Velino, V16 Noce Canaletto, AL08 Black / UNIWOOD

# UNIFLEX-3D

3D VOLUMETRIC MILLING (SOLID WOOD, VENEER)



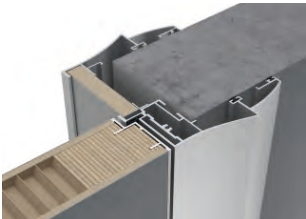
UNIFLEX-3D, Alu, Wave-H, UW16 Noce Canaletto, AL08 Black / INVISIBLE



INVISIBLE frame



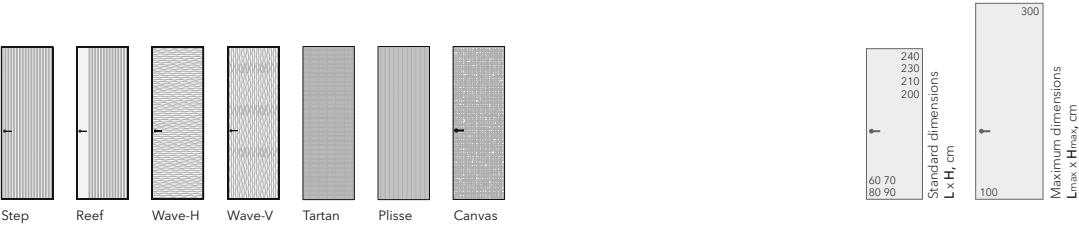
PLANAR frame



DECO frame



MAXI frame



U

UNIFLEX - 3D

3D drawing  
(veneer, solid wood)

AL

ALUMINIUM

Anodizing  
and painting



UNIFLEX-3D, Alu, Step, US16 Noce Canaletto, AL07 Dark Brown / PLANAR

UNIX-60

AFFORDABLE QUALITY 



UNIX-60, Piatto, DC06 Noce Chiaro, AL08 Black / INVISIBLE



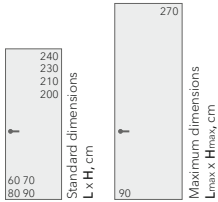
INVISIBLE frame



PLANAR frame



MAXI frame



UNIX-60, Piatto, DC05 Noce Scuro, AL04 Soft Bronze / PLANAR

DC

DECORIT

Decorative material

AL

ALUMINIUM

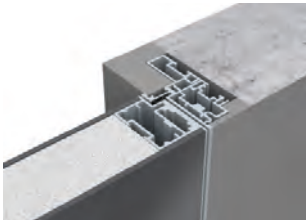
Anodizing and painting

# LAGO-60

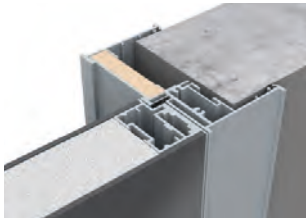
DOUBLE GLASS IN ALUMINUM STRUCTURE



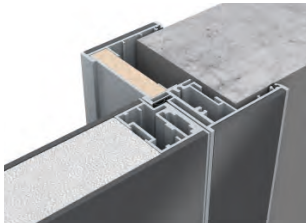
LAGO-60, Lira, G01 Bianco, AL09 Chrome Matt / INVISIBLE



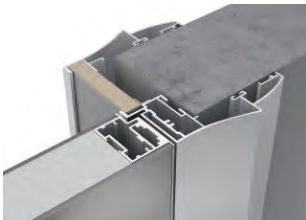
INVISIBLE frame



PLANAR frame



PLANAR frame with insert



DECO frame



MAXI frame



- |                      |                    |          |                             |                   |             |                        |
|----------------------|--------------------|----------|-----------------------------|-------------------|-------------|------------------------|
| <b>G</b>             | <b>GM</b>          | <b>M</b> | <b>SM</b>                   | <b>GT</b>         | <b>GS</b>   | <b>AL</b>              |
| GLASS                | GLASS MATT         | MIRROR   | SATINATO SOLE               | TRANSPARENT GLASS | SATIN GLASS | ALUMINIUM              |
| Glossy painted glass | Matt painted glass | Mirrors  | Embossed painted matt glass | Transparent glass | Matt glass  | Anodizing and painting |



LAGO-60, Lira, GT02 Trasparente Grafite, AL08 Black / INVISIBLE

# LAGO-60

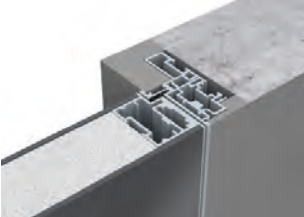
DOUBLE GLASS IN ALUMINUM STRUCTURE



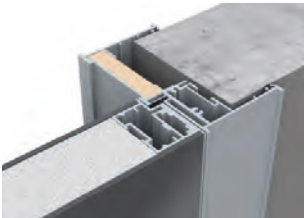
LAGO-60, Lira, SM15 Satinato Sole Grafite, AL08 Black / INVISIBLE



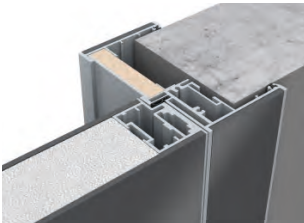
fragment of Satinato Sole glass



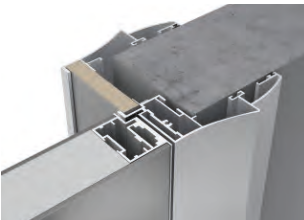
INVISIBLE frame



PLANAR frame



PLANAR frame with insert



DECO frame



MAXI frame



LAGO-60, Modelica, G06 Grigio Seta, AL08 Black / INVISIBLE

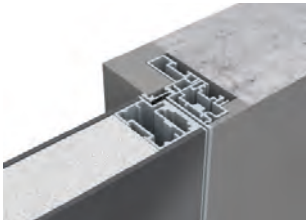
<b>G</b>	<b>GM</b>	<b>M</b>	<b>SM</b>	<b>GT</b>	<b>GS</b>	<b>AL</b>
GLASS	GLASS MATT	MIRROR	SATINATO SOLE	TRANSPARENT GLASS	SATIN GLASS	ALUMINIUM
Glossy painted glass	Matt painted glass	Mirrors	Embossed painted matt glass	Transparent glass	Matt glass	Anodizing and painting

# LAGO-60

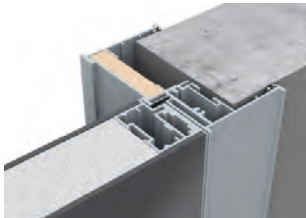
DOUBLE GLASS IN ALUMINUM STRUCTURE



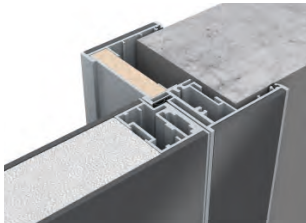
LAGO-60, Lira, G13 Rocca, AL09 Chrome Matt / PLANAR ins.



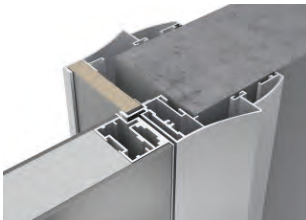
INVISIBLE frame



PLANAR frame



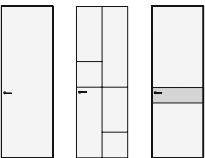
PLANAR frame with insert



DECO frame



MAXI frame



Lira Modelica Plain

<b>G</b>	<b>GM</b>	<b>M</b>	<b>SM</b>	<b>GT</b>	<b>GS</b>	<b>AL</b>
GLASS	GLASS MATT	MIRROR	SATINATO SOLE	TRANSPARENT GLASS	SATIN GLASS	ALUMINIUM
Glossy painted glass	Matt painted glass	Mirrors	Embossed painted matt glass	Transparent glass	Matt glass	Anodizing and painting



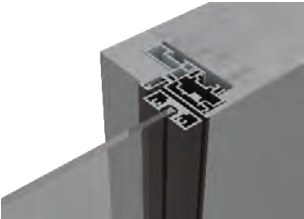
LAGO-60, Modelica, G10 Nero, AL04 Soft Bronze / DECO

# SLIM

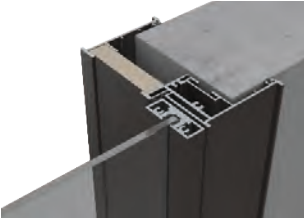
GLASS IN ELEGANT ALUMINIUM STRUCTURE



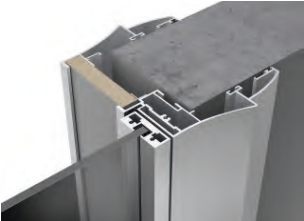
SLIM, Space, GT05 Sole, AL08 Black / INVISIBLE



INVISIBLE frame



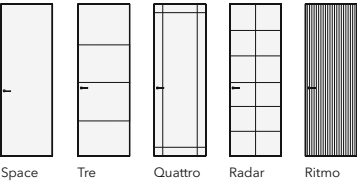
PLANAR frame



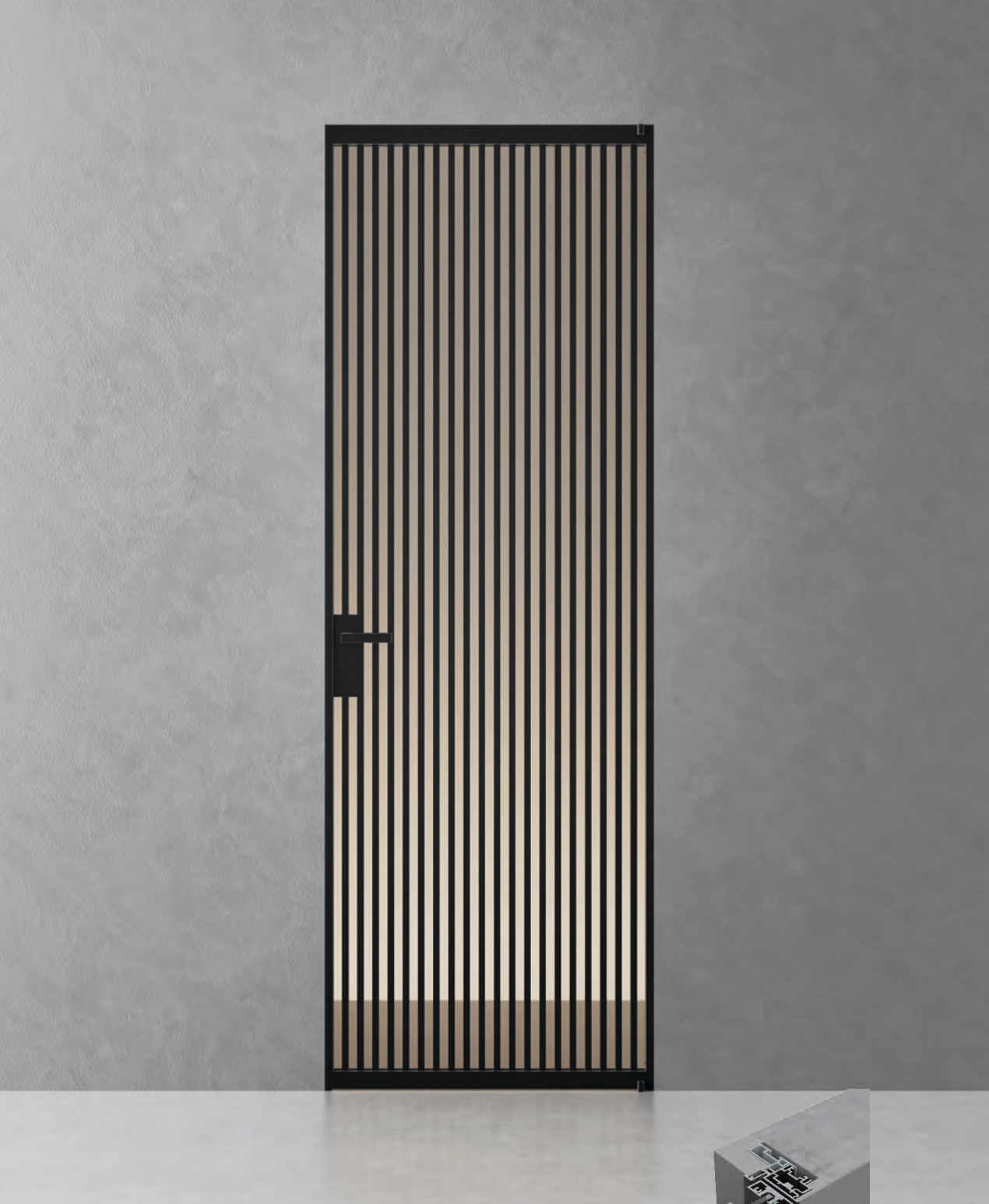
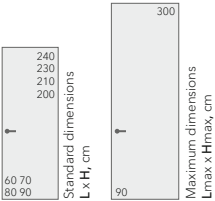
DECO frame



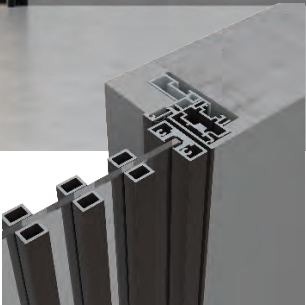
MAXI frame



Space Tre Quattro Radar Ritmo

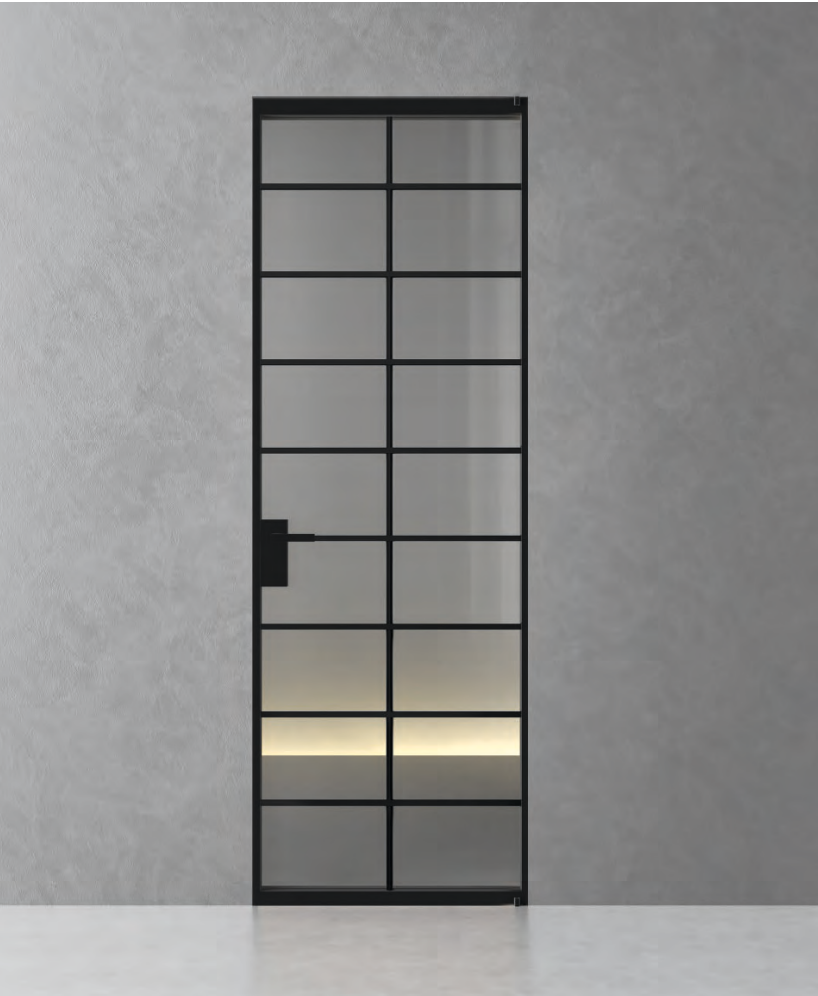


SLIM, Ritmo, GT03 Trasparente Bronzo, AL08 Black / INVISIBLE

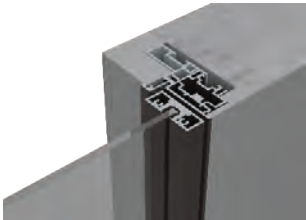


# SLIM

GLASS IN ELEGANT ALUMINIUM STRUCTURE



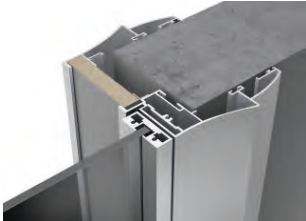
SLIM, Radar, GT02 Trasparente Grafite, AL08 Black / INVISIBLE



INVISIBLE frame



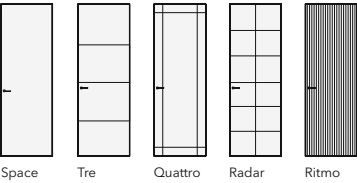
PLANAR frame



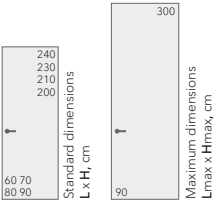
DECO frame



MAXI frame



Space Tre Quattro Radar Ritmo



GT

TRANSPARENT GLASS  
Transparent glass

GS

SATIN GLASS  
Matt glass

AL

ALUMINIUM  
Anodizing and painting



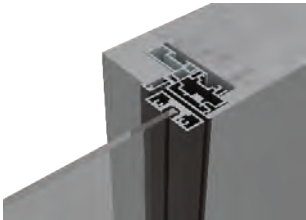
SLIM, Space, GT13 Rete Oro, AL04 Soft Bronze / INVISIBLE

# SIGMA

GLASS IN ELEGANT ALUMINIUM STRUCTURE



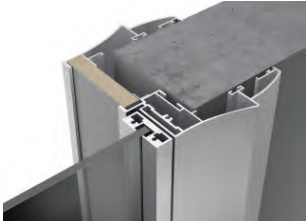
SIGMA-02, GT02 Trasparente Grafite, GS08 Satinato Grafite, AL08 Black / MAXI



INVISIBLE frame



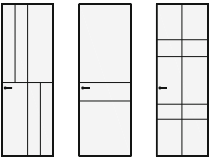
PLANAR frame



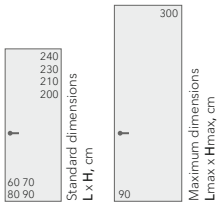
DECO frame



MAXI frame



Sigma-01   Sigma-02   Sigma-03



GT

TRANSPARENT GLASS

Transparent glass

GS

SATIN GLASS

Matt glass

AL

ALUMINIUM

Anodizing and painting



SIGMA-01, GT02 Trasparente Grafite, GT01 Trasparente, AL02 Champagne / PLANAR

# TONDA

PREMIUM DOORS WITH RADIUS END



frame with false box, without extender



frame with false box, with extender

TONDA, Tirol, LG01 Bianco Gloss, AL08 Black



Tirol



Maximum dimensions  
L<sub>max</sub> x H<sub>max</sub>, cm

L

LACCATO MATT

Matt  
enamels

LG

LACCATO GLOSS

Glossy  
enamels

AL

ALUMINIUM

Anodizing  
and painting



TONDA, Tirol, LG01 Bianco Gloss, AL08 Black

# PIVOT

ПОВОРОТНЫЕ ДВЕРИ



PIVOT-SLIM, Tre, GT01 Trasparente, AL08 Black



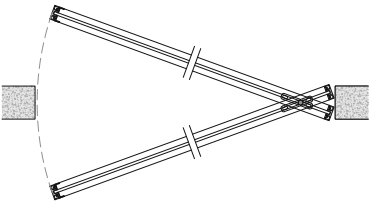
PIVOT-SLIM



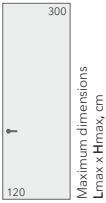
PIVOT-LAGO



PIVOT-FILO



PIVOT. Locking in the "closed" position and the "open" position on both sides.



<b>L</b>	<b>HP</b>	<b>V</b>	<b>LG</b>	<b>U</b>	<b>G</b>	<b>GM</b>	<b>GT</b>	<b>GS</b>	<b>M</b>
LACCATO MATT	HPL	VENEER NATURAL	LACCATO GLOSS	UNIFLEX - 3D	GLASS	GLASS MATT	TRANSPARENT GLASS	SATIN GLASS	MIRROR
Matt enamels	Composite material	Natural veneer	Glossy enamels	3D drawing (veneer, solid wood)	Glossy painted glass	Matt painted glass	Transparent glass	Matt glass	Mirrors



PIVOT-LAGO, Lira, GT01 Trasparente, AL08 Black

TREND

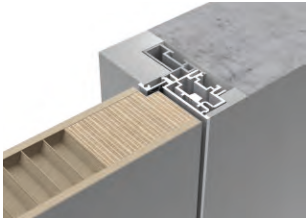
TRADITIONAL DOORS



TREND-45, TR18, L06 Grigio Seta, AL08 Black / UNIDOOR



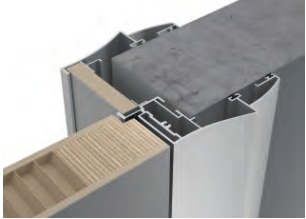
TREND-45, UNIDOOR frame



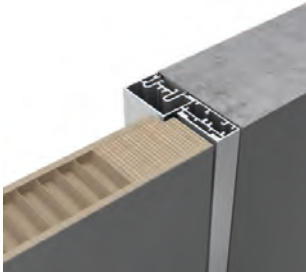
TREND-60, INVISIBLE frame



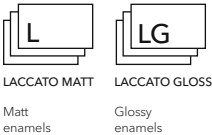
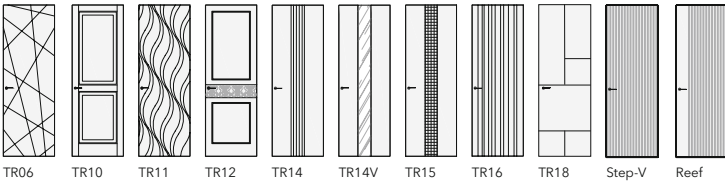
TREND-60, PLANAR frame



TREND-60, DECO frame



TREND-60, MAXI frame



LEVEL

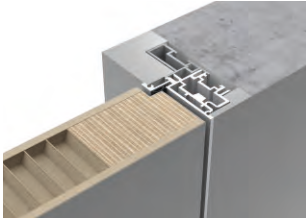
TRADITIONAL DOORS



LEVEL-45, 101, L01 Bianco / UNIDOOR



LEVEL-45, UNIDOOR frame



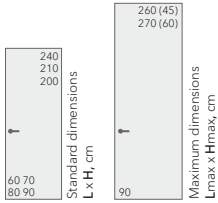
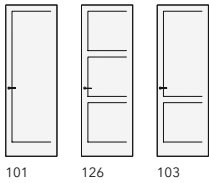
LEVEL-60, INVISIBLE frame



LEVEL-60, PLANAR frame



LEVEL-60, MAXI frame





ALDA-45, 101, L01 Bianco / UNIDOOR



ALDA-45, UNIDOOR frame



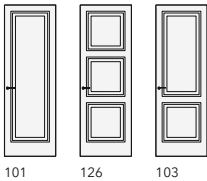
ALDA-60, INVISIBLE frame



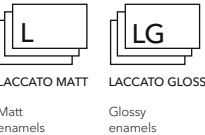
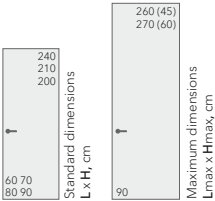
ALDA-60, PLANAR frame



ALDA-60, MAXI frame



101 126 103



1. ALDA-45, 101, L01 Bianco / UNIDOOR  
2. FORMINA, Alda, H3710 ST12 Karini Walnut, L01 Bianco, AL08 Black

STELLA

TRADITIONAL CLASSICS



STELLA, PD, L01 Bianco / UNIDOOR



UNIDOOR frame



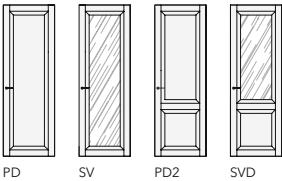
CORDA-45, 127P, L01 Bianco / UNIDOOR



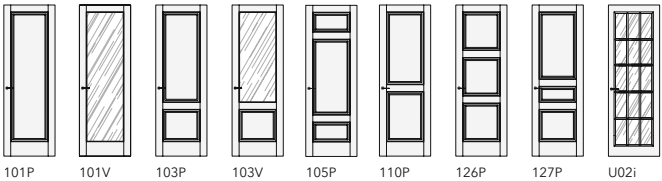
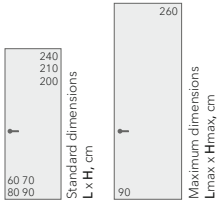
CORDA-45, UNIDOOR frame



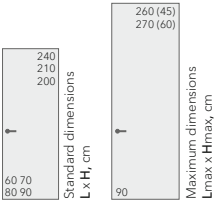
CORDA-60, INVISIBLE frame



PD SV PD2 SVD



101P 101V 103P 103V 105P 110P 126P 127P U02i



L

LACCATO MATT

Matt enamels

GT

TRANSPARENT GLASS

Transparent glass

GS

SATIN GLASS

Matt glass

L

LACCATO MATT

Matt enamels

LG

LACCATO GLOSS

Glossy enamels

GT

TRANSPARENT GLASS

Transparent glass

GS

SATIN GLASS

Matt glass

GRAND

TRADITIONAL CLASSICS



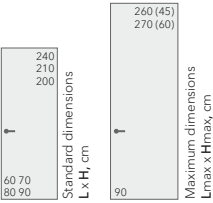
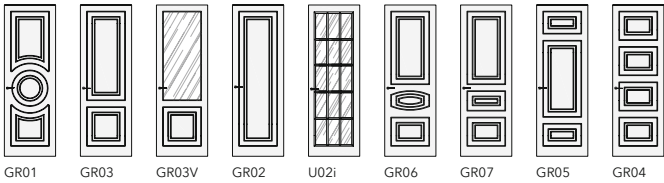
GRAND-45, GR01, L01 Bianco / UNIDOOR



GRAND-45, UNIDOOR frame



GRAND-60, INVISIBLE frame



L

LACCATO MATT

Matt enamels

LG

LACCATO GLOSS

Glossy enamels

GT

TRANSPARENT GLASS

Transparent glass

GS

SATIN GLASS

Matt glass

PRIMA

TRADITIONAL CLASSICS



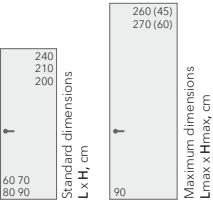
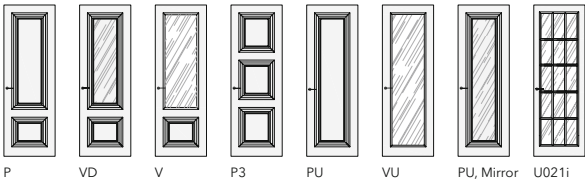
PRIMA-45, P, L01 Bianco / UNIDOOR



PRIMA-45, UNIDOOR frame



PRIMA-60, INVISIBLE frame



L

LACCATO MATT

Matt enamels

GT

TRANSPARENT GLASS

Transparent glass

GS

SATIN GLASS

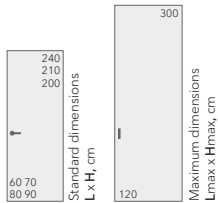
Matt glass

SLIDER

SLIDING DOORS IN BOX



1. SLIDER-FILO, L00 Fondo      2. MINI, L00 Fondo



<b>L</b>	<b>HP</b>	<b>V</b>	<b>LG</b>	<b>U</b>	<b>G</b>	<b>GM</b>	<b>GT</b>	<b>GS</b>	<b>M</b>
LACCATO MATT	HPL	VENEER NATURAL	LACCATO GLOSS	UNIFLEX - 3D	GLASS	GLASS MATT	TRANSPARENT GLASS	SATIN GLASS	MIRROR
Matt enamels	Composite material	Natural veneer	Glossy enamels	3D drawing (veneer, solid wood)	Glossy painted glass	Matt painted glass	Transparent glass	Matt glass	Mirrors

MAGIC  
SLIDING DOORS ON HIDDEN MECHA



MAGIC-FILO, Alu, Vento V17 Rovere Chiaro, AL09 Chrome Matt



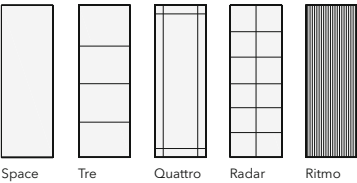
<b>L</b>	<b>HP</b>	<b>V</b>	<b>LG</b>	<b>U</b>	<b>G</b>	<b>GM</b>	<b>SM</b>	<b>M</b>	<b>AL</b>
LACCATO MATT	HPL	VENEER NATURAL	LACCATO GLOSS	UNIFLEX - 3D	GLASS	GLASS MATT	SATINATO SOLE	MIRROR	ALUMINIUM
Matt enamels	Composite material	Natural veneer	Glossy enamels	3D drawing (veneer, solid wood)	Glossy painted glass	Matt painted glass	Embossed painted matt glass	Mirrors	Anodizing and painting

# STRATUS-SLIM

SLIDING DOORS AND PARTITIONS



STRATUS-SLIM, Radar, GT02 Trasparente Grafite, AL08 Black / Pm23



STRATUS-SLIM, Space, GT13 Rete Oro, AL02 Champagne / Pm23

# STRATUS-SLIM

SLIDING DOORS AND PARTITIONS



STRATUS-SLIM, Space, GT05 Sole, AL08 Black / S12N



ceiling overhead track



wall track



built-in track



1. STRATUS-SLIM, Ritmo, GT02 Trasparente Grafite, AL08 Black / Pm23  
2. ALTO, H3710 ST12 Karini Wulnut, AL08 Black

# STRATUS-SLIM

SLIDING DOORS AND PARTITIONS



- 1. STRATUS-SLIM, **Quattro**, GS06 Stopsol Grafite, AL03 Soft Gold / P12
- 2. PORTOFINO, Zenit 26
- 3. ALTO, U201 ST9 Pebble Grey, AL03 Soft Gold
- 4. COVER, **Valetti**, V20 Noce Americano



- 1. STRATUS-SLIM, Space, GT05 Sole, AL04 Soft Bronze / Pm23
- 2. MILAN, HP04 Marmo Bianco, AL04 Soft Bronze
- 3. LUMINA, GT02 Trasparente Grafite, AL04 Soft Bronze
- 4. COVER, Step, US16 Noce Canaletto

# STRATUS-SIGMA

SLIDING DOORS AND PARTITIONS



STRATUS-SIGMA, Sigma-01 door leaf, GT01 glass Trasparente, стекло GT02 Trasparente Grafite,  
AL08 Black structure / Pm22 sliding construction



SIGMA fragment of door leaf

STRATUS-LAGO

SLIDING DOORS AND PARTITIONS



STRATUS-LAGO, Lira, GT03 Trasparente Bronzo, AL08 Black / Pm22



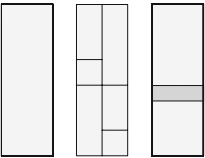
ceiling overhead track



built-in track



wall track



Lira Modelica Plain



G

GLASS

Glossy painted glass

GM

GLASS MATT

Matt painted glass

M

MIRROR

Mirrors

SM

SATINATO SOLE

Embossed painted matt glass

AL

ALUMINIUM

Anodizing and painting



STRATUS-LAGO, Lira, G13 Rocca, AL08 Black / Pm22

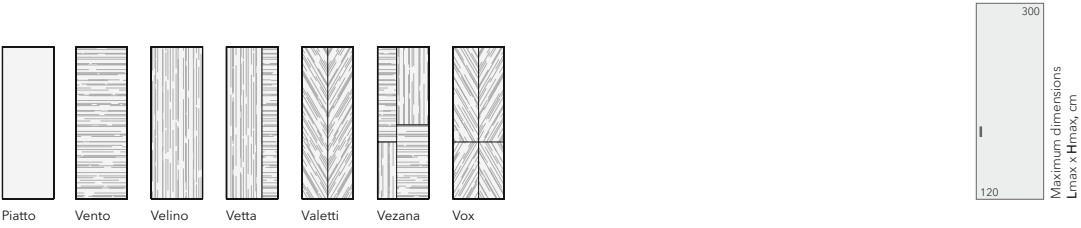


# STRATUS-FILO

SLIDING DOORS AND PARTITIONS



STRATUS-FILO, Piatto, L07 Grigio Fume, AL09 Chrome Matt / P11N



L

LACCATO MATT

Matt enamels

HP

HPL

Composite material

V

VENEER NATURAL

Natural veneer

LG

LACCATO GLOSS

Glossy enamels

AL

ALUMINIUM

Anodizing and painting



STRATUS-FILO, Alu, Vento, V28 Noce Nazionale, AL08 Black / Pm24

LIBRO  
FOLDING PARTITIONS



LIBRO-SLIM, Space, GT02 Trasparente Grafite, AL08 Black



- GT**  
TRANSPARENT GLASS  
Transparent glass
- GS**  
SATIN GLASS  
Matt glass
- AL**  
ALUMINIUM  
Anodizing and painting

TRANSFORMER  
FOLDING SLIDING PARTITIONS



TRANSFORMER Vario, Velino, V16 Noce Canaletto



- L**  
LACCATO MATT  
Matt enamels
- HP**  
HPL  
Composite material
- V**  
VENEER NATURAL  
Natural veneer
- LG**  
LACCATO GLOSS  
Glossy enamels



WALLSTREET-SLIM, Space, GT02 Trasparente Grafite, AL08 Black



WALLSTREET-SLIM with door frame



WALLSTREET-LAGO with door frame



longitudinal connection



abutment to the wall



Maximum dimensions  
Lmax x Hmax, cm






<b>L</b>	<b>HP</b>	<b>V</b>	<b>LG</b>	<b>U</b>	<b>G</b>	<b>GM</b>	<b>GT</b>	<b>GS</b>	<b>M</b>
LACCATO MATT	HPL	VENEER NATURAL	LACCATO GLOSS	UNIFLEX - 3D	GLASS	GLASS MATT	TRANSPARENT GLASS	SATIN GLASS	MIRROR
Matt enamels	Composite material	Natural veneer	Glossy enamels	3D рисунок (шпон, массив)	Glossy painted glass	Matt painted glass	Transparent glass	Matt glass	Mirrors



WALLSTREET-LAGO, Lira, GS08 Satinato Grafite, AL08 Black



COVER, LG14 Ombra Gloss

- |  |   |   |   |   |
|--|---|---|---|---|
|  |  |  |  |  |
| LACCATO MATT   | HPL   | VENEER NATURAL  | LACCATO GLOSS   | UNIFLEX - 3D  |
| Matt enamels   | Composite material  | Natural veneer  | Glossy enamels  | 3D рисунок (шпон, массив)   |



1. COVER, Vento, V20 Noce Americano  
2. LUMINA, GT02 Trasparente Grafite, AL08 Black



1. COVER, Step, US16 Noce Canaletto
2. UNIFLEX-3D, Alu, Step, US16 Noce Canaletto, AL08 Black / INVISIBLE
3. STRATUS, Alu, Step, US16 Noce Canaletto, AL08 Black / Pm22
4. ALTO, H3710 ST12 Karini Wulnut, AL08 Black



1. ALTO, H3710 ST12 Karini Walnut, GT02 Trasparente Grafite, AL08 Black
2. UNIFLEX-3D, Alu, Step, US16 Noce Canaletto, AL08 Black / INVISIBLE
3. COVER, Step, US16 Noce Canaletto
4. MILAN, V16 Noce Canaletto, AL08 Black

VIRGOLA  
ILLUMINATED SHELVES



VIRGOLA, GM38 Nero Mat, AL38 Nero

- |                      |                    |                   |                        |
|----------------------|--------------------|-------------------|------------------------|
| <b>G</b>             | <b>GM</b>          | <b>GT</b>         | <b>AL</b>              |
| GLASS                | GLASS MATT         | TRANSPARENT GLASS | ALUMINIUM              |
| Glossy painted glass | Matt painted glass | Transparent glass | Anodizing and painting |

LUMINA  
ILLUMINATED SHELVES



LUMINA, GT02 Trasparente Grafite, AL08 Black



ALTO  
SHELVING AND BOOKCASES



ALTO, H3710 ST12 Karini Wulnut, GT02 Trasparente Grafite, AL08 Black



1. ALTO, H3156 ST12 Cambridge Oak, GT02 Trasparente Grafite, AL04 Soft Bronze  
2. MILAN, HP04 Marmo Bianco, AL04 Soft Bronze

MONTBLANC  
SHELVING AND BOOKCASES



MONTBLANC, W01 Noce Europeo, AL38 Nero



Mounting the rack to the wall



Hanging dresser with drawers



Fixing the rack to the floor



DC

DECORIT

Decorative material

GT

TRANSPARENT GLASS

Transparent glass

AL

ALUMINIUM

Anodizing and painting

FORMINA, H3710 ST12 Karini Wulnut, GT02 Trasparente Grafite, AL08 Black



FORMINA, Notte, H3710 ST12 Karini-Walnut, L01 Bianco, AL08 Black



FORMINA showcase



FORMINA wardrobe with mezzanines





LAGUNA, H3710 ST12 Karini Walnut /  
U963 ST9 Anthracite, AL08 Black



LUCE, W01 Noce Europeo, GT02 Trasparente Grafite, AL38 Nero  
 Showcase cabinet 3830x580xh2800

W

WOOD

Массив древесины

GT

TRANSPARENT GLASS

Transparent glass

AL

ALUMINIUM

Anodizing and painting



ALBA, SL, M01 Mirror, AL08 Black

Standard dimensions L x H, cm

80x200

70x180

60x180

SL

LG



ALBA, LG, M01 Mirror, AL03 Soft Gold

M

MIRROR

Mirrors

AL

ALUMINIUM

Anodizing and painting



1



2



3



4

1. MATEO, MT-03, W01 Noce Europeo, GT02 Trasparente Grafite, AL38 Nero  
2. VIRGOLA, GM38 Nero Mat, AL38 Nero  
3. MIRAGE, MR-06, W01 Noce Europeo, GT02 Trasparente Grafite, AL38 Nero  
4. VITRUM, VT-02, W01 Noce Europeo, GT02 Trasparente Grafite, AL38 Nero



MIRAGE, MR-06, W01 Noce Europeo, GT02 Trasparente Grafite, AL38 Nero  
Dresser - showcase with drawers 2022x503xh835



MIRAGE, MR-02, W01 Noce Europeo, GT02 Trasparente Grafite, AL38 Nero  
Dresser - showcase with glass shelves 2022x503xh835

W

WOOD

Solid wood

GT

TRANSPARENT GLASS

Transparent glass

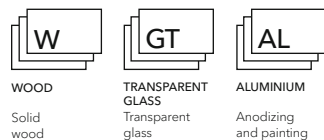
AL

ALUMINIUM

Anodizing and painting



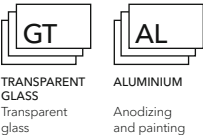
**MATEO, MT-01**, W01 Noce Europeo, GT02 Trasparente Grafite, AL38 Nero  
Outdoor showcase with drawers 1010x503xh1571



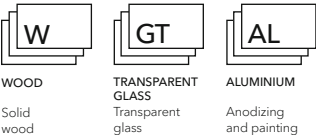
**MATEO, MT-03**, W01 Noce Europeo, GT02 Trasparente Grafite, AL38 Nero  
Outdoor showcase with glass shelves 1010x503xh2019



MISTRAL, ML-04, GT02 Trasparente Grafite, AL38 Nero  
Outdoor shelving showcase with drawers 1954x402x1887



MOSAICO, MS-01, W01 Noce Europeo, GT02 Trasparente Grafite, AL38 Nero  
Island chest with drawers 2022x835xh948

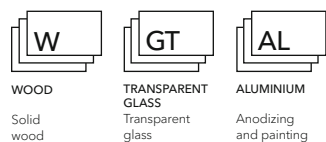




**VITRUM, VT-02**, W01 Noce Europeo, GT02 Trasparente Grafite, AL38 Nero  
Hanging showcase with drawer 428x340xh1607



**VITRUM, VT-01**, W01 Noce Europeo, GT02 Trasparente Grafite, AL38 Nero  
Hanging showcase with glass shelves 428x340xh1287





MILAN, Vox, V15 Rovere Tabacco, AL07 Dark Brown

HP

HPL

Composite material

V

VENEER NATURAL

Natural veneer

GT

TRANSPARENT GLASS

Transparent glass

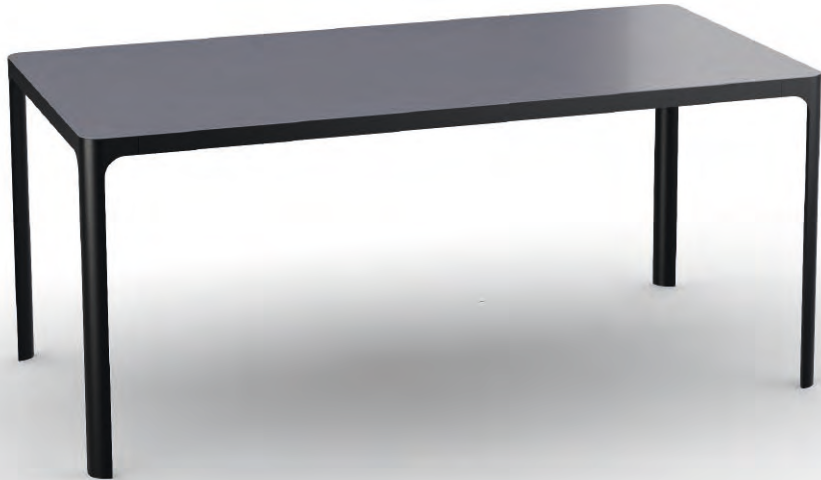
AL

ALUMINIUM

Anodizing and painting



MILAN, GT01 Trasparente, Chrome



ALMA, GS08 Satinato Grafite, AL38 Nero

G

GLASS

Glossy painted glass

GM

GLASS MATT

Matt painted glass

AL

ALUMINIUM

Anodizing and painting



VERSUS, LAMINAM, AL38 Nero

G

GLASS

Glossy painted glass

GM

GLASS MATT

Matt painted glass

AL

ALUMINIUM

Anodizing and painting

# PORTOFINO

MODULAR SOFAS



PORTOFINO, PR.D3, Piano 5

PORTOFINO, D.PR6L, Piano 4

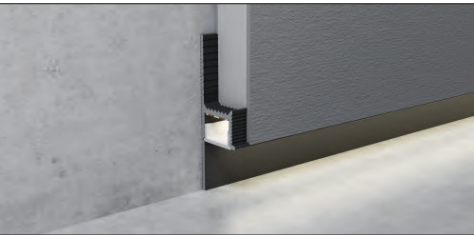
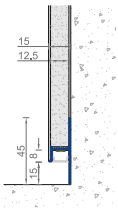
\* color palette of fabrics on pg.147

# SKIRTING BOARDS

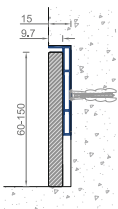


IMPULS shadow base board with imitation on canvas

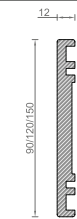
Shadow base board **IMPULS**



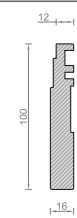
**MINI** with insert



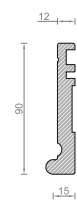
**NP9**



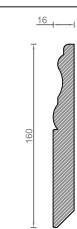
**NA10**



**GIOTTO**



**PRIMA**



**L**

LACCATO MATT

Matt enamels

**V**

VENEER NATURAL

Natural veneer

**AL**

ALUMINIUM

Anodizing and painting

# UNION CONTRACT

PRODUCTION AND SUPPLY OF DOORS AND  
FURNITURE TO VARIOUS BIG PROJECTS

**UNION CONTRACT** is a division that deals with the contract supply of various doors, wall panels and furniture for hospitality, offices, medical and other institutions. Thanks to many years of experience and possessing a large-scale production with modern Italian equipment, the company is able to carry out any projects in set terms under efficient proposal and at reasonable prices.

WE OFFER manufacture and supply of:

- Interior doors and partitions of any design up to 3.5 m high
- Entrance and technical doors
- Fire rated doors
- Basic and non-standard cabinet furniture
- Interior decoration with wall panels
- Upholstered furniture





**BIG LINE, "made in EU"**  
Finishes - Aluminium (pp. 150)



**ROBOQUATTRO S, COLOMBO "made in ITALY"**  
Chrome Matt, Black, Chrome, White, Gold



**MELODY, "made in EU"**  
Finishes - Aluminium (pp. 150)



**GIRA, COLOMBO "made in ITALY"**  
Chrome Matt



**SQUARE, "made in EU"**  
Finishes - Aluminium (pp. 150)



**PUNTO minimal, "made in ITALY"**  
Отделки - Aluminium (стр. 150)



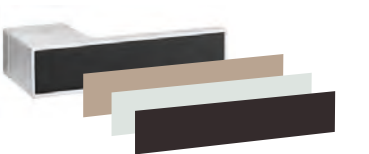
**CINTO, "made in EU"**  
Finishes - Aluminium (pp. 150)



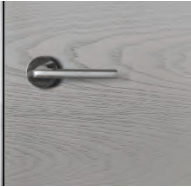
**NAXOS, FORME "made in ITALY"**  
Chrome Matt, Black, Chrome, White



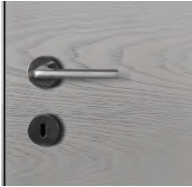
**BIG LINE with insert, "made in EU"**  
Finishes - Aluminium (pp. 150)



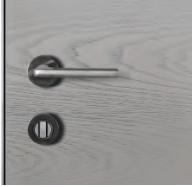
**BIG LINE handle insert finishes**  
are shown (pp. 138-150)



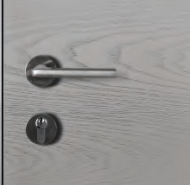
Handle only



Handle with key PAT



Handle with WC lock



Handle with YALE lock



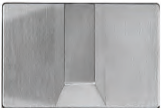
**Latch CD 49, COLOMBO "made in ITALY",**  
Chrome matt



**Latch PT 19 BZG, COLOMBO, "made in ITALY",**  
Chrome Matt, Black, Chrome, White, Gold



**Latch PUNTO WC, "made in ITALY"**  
Finishes - Aluminium (pp. 150)



**Latch 3045 RE, "made in EU"**  
Finishes - Aluminium (pp. 150)

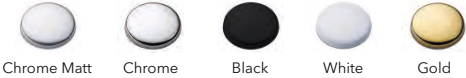


**POLARIS, AGB "made in ITALY"**  
Magnetic silent lock  
Chrome mat, Gold, Black, White

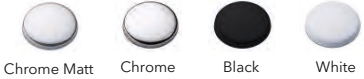


**HOOK, AGB "made in ITALY"**  
Lock for sliding door  
Chrome mat, Gold, Black, White

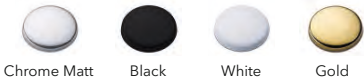
**COLOMBO finishes**



**FORME finishes**




**AGB finishes**



L

LACCATO MATT

Painting with matt enamels in production conditions using specialized “made in ITALY” equipment.



RAL  
NCS

<div>Bianco L01</div>	<div>Bianco Night L02</div>	<div>Avorio L03</div>	<div>Grigio Seta L06</div>	<div>Grigio Fume L07</div>
<div>Nero L10</div>	<div>Tortora L11</div>	<div>Sabbia L12</div>	<div>Rocca L13</div>	<div>Ombra L14</div>
<div>Grafite L15</div>	<div>Bruno L16</div>	<div>Sky Blue L18</div>	<div>Mint L17</div>	<div>Grass L20</div>
<div>Olive L19</div>	<div>Terracotta L22</div>	<div>Fondo L00</div>	<div>Fondo coating is a primer with high hiding power and good adhesion. It is used as a base for applying decorative coatings of any color, with any effects.</div>	

LG

LACCATO GLOSS

High-quality gloss coating of 90 Gloss is achieved by applying 8 layers of varnish and intermediate sanding on specialized “made in ITALY” equipment.

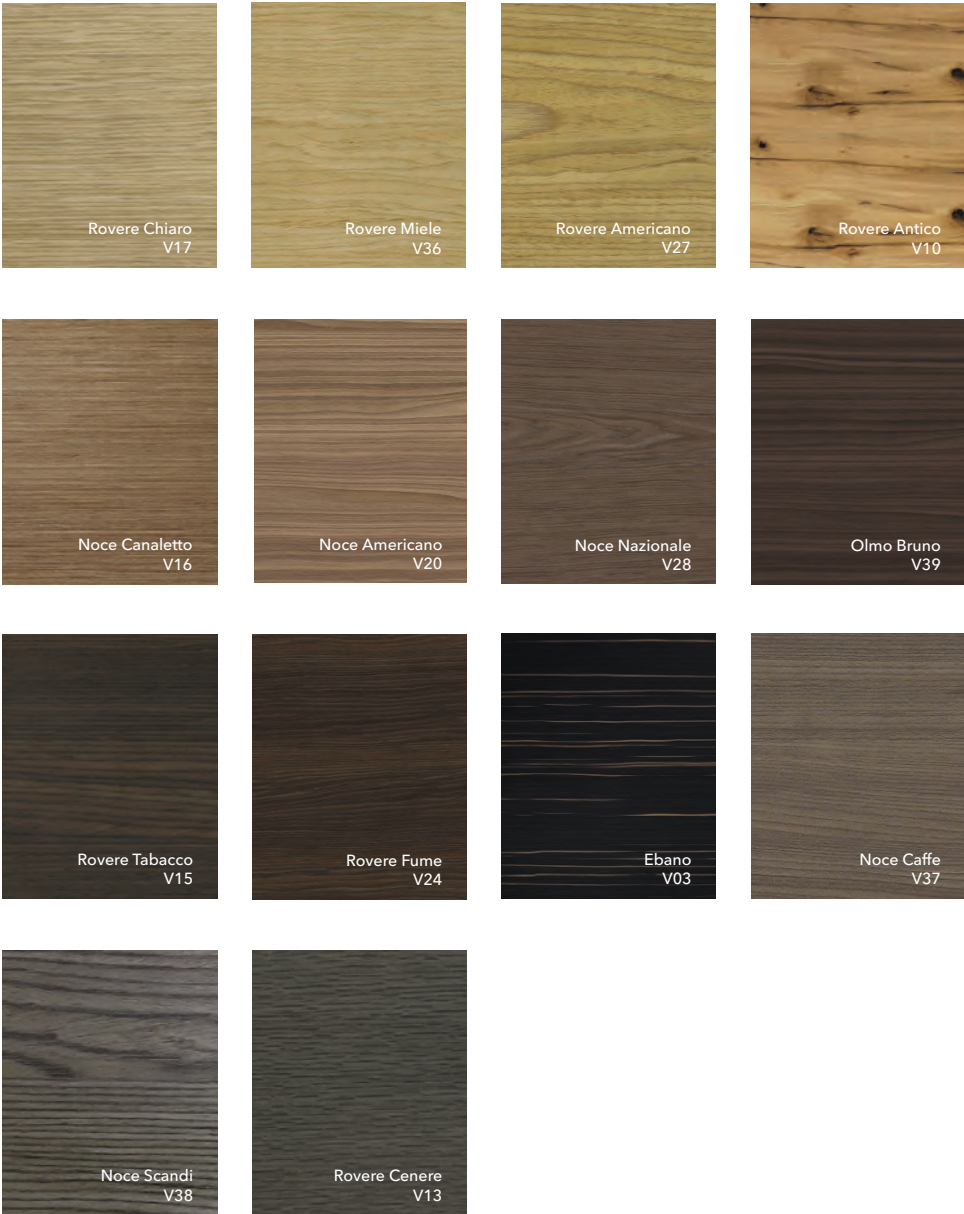


RAL  
NCS

<div>Bianco LG01</div>	<div>Bianco Night LG02</div>	<div>Avorio LG03</div>	<div>Grigio Seta LG06</div>	<div>Grigio Fume LG07</div>
<div>Nero LG10</div>	<div>Tortora LG11</div>	<div>Sabbia LG12</div>	<div>Rocca LG13</div>	<div>Ombra LG14</div>
<div>Grafite LG15</div>	<div>Bruno LG16</div>	<div>Sky Blue LG18</div>	<div>Mint LG17</div>	<div>Grass LG20</div>
<div>Olive LG19</div>	<div>Terracotta LG22</div>			

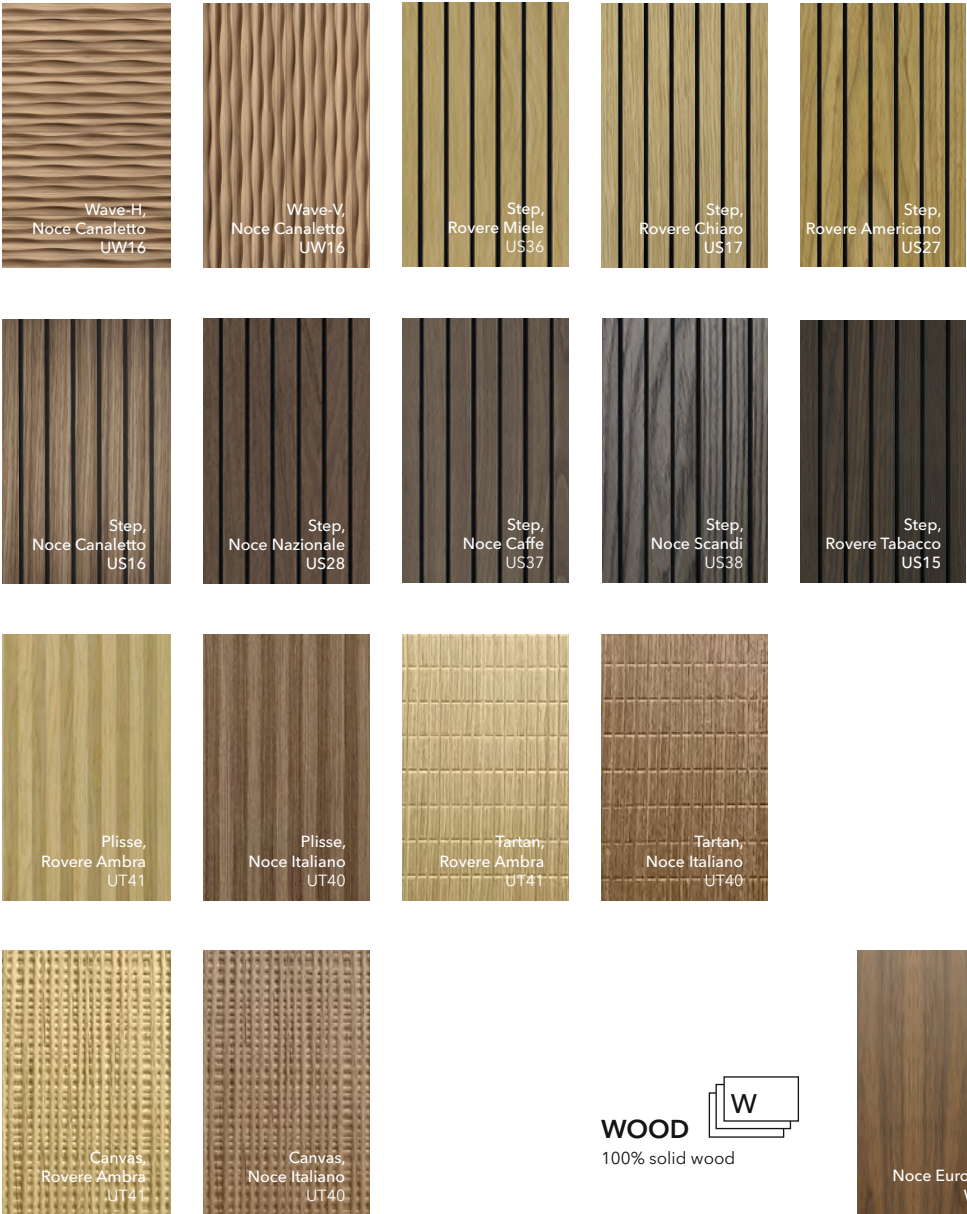
**VENEER NATURAL** 

Natural veneer of valuable wood species with open pores covered with matt varnish

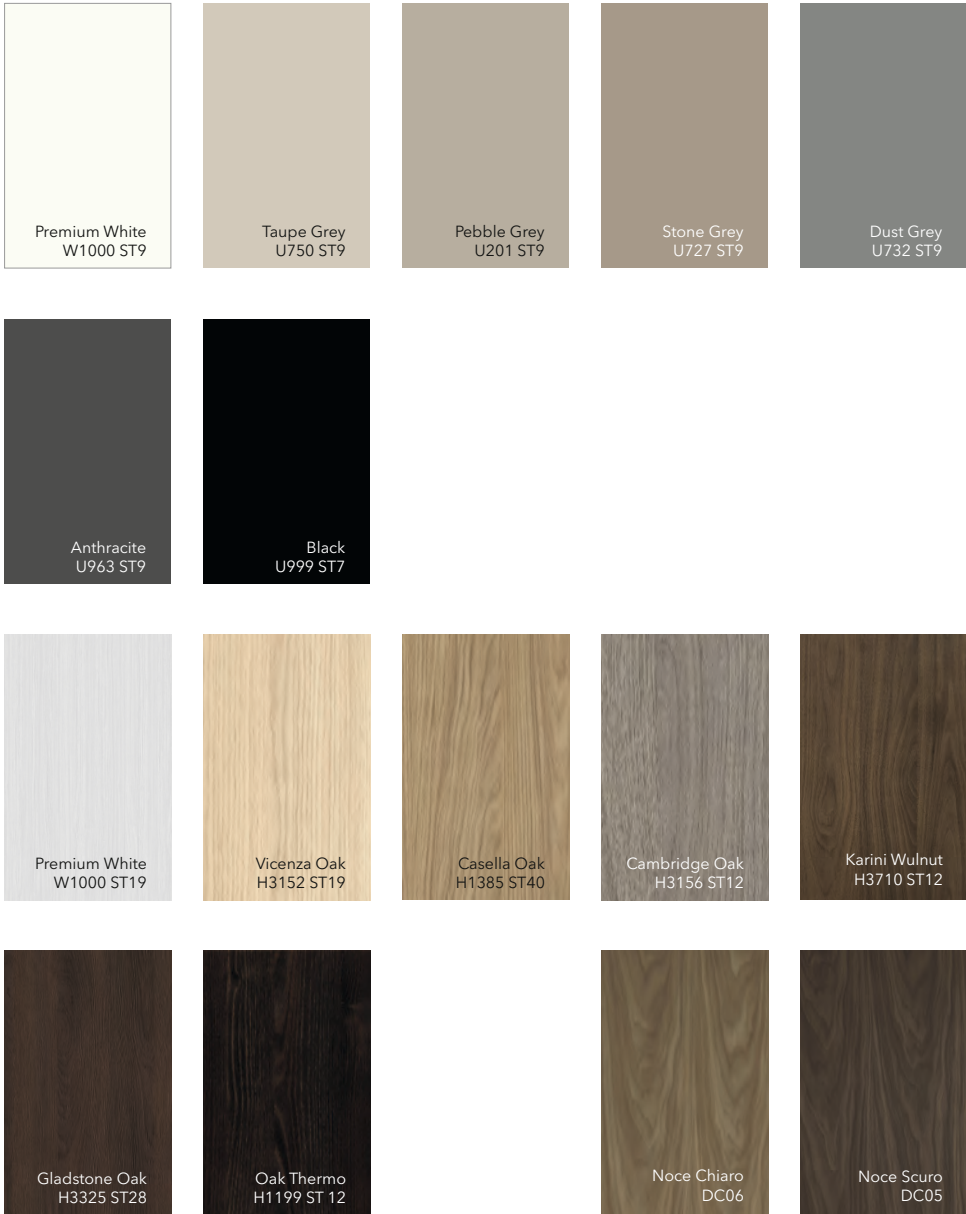


**UNIFLEX-3D** 

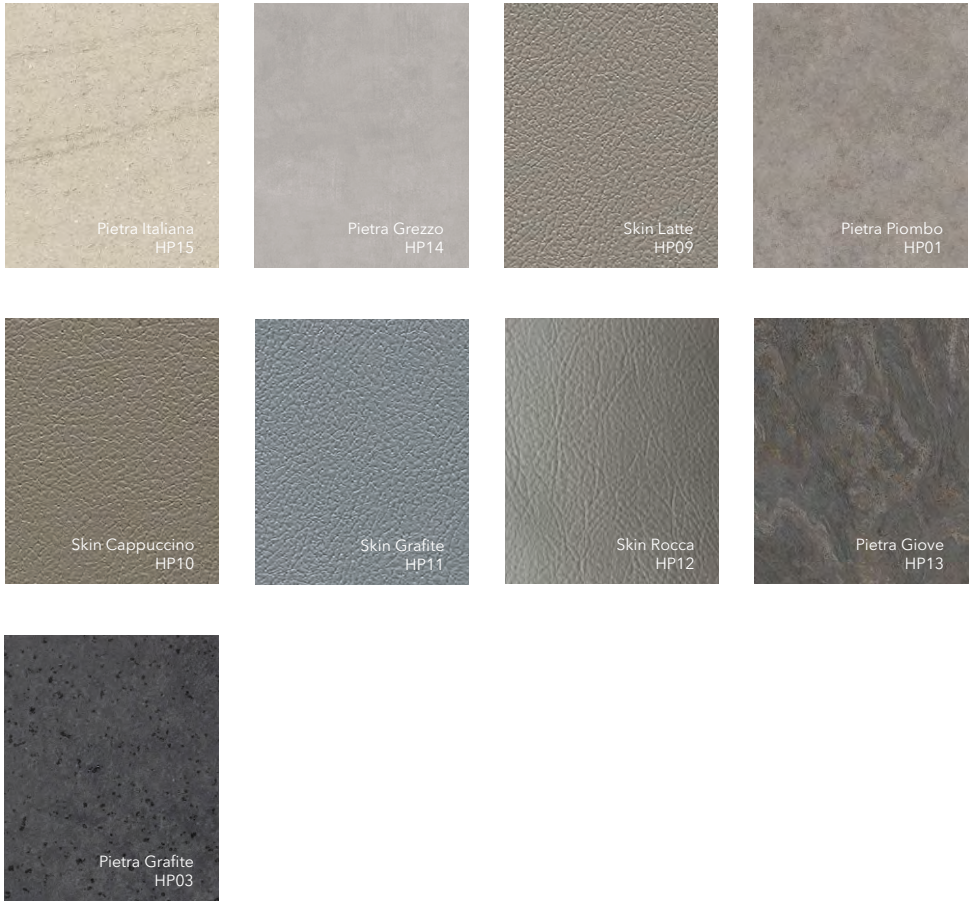
Volumetric 3D milling on solid wood and veneer of natural woo



**DECORIT** **DC**  
Wear-resistant decorative material



**HPL** **HP**  
Composite decorative material



**GLASS**

Safety glossy glass. Painting on specialized equipment in production conditions.

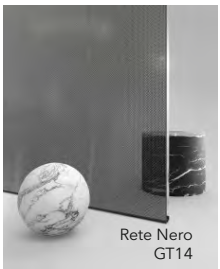
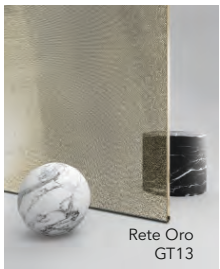
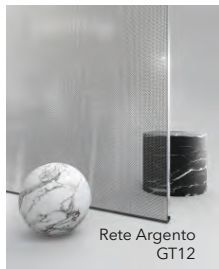


**GLASS MATT**

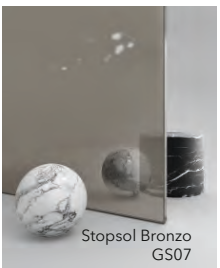
Safety matt glass. Painting on specialized equipment in production conditions.



**TRANSPARENT GLASS**   
Transparent safety glass with decorative effects



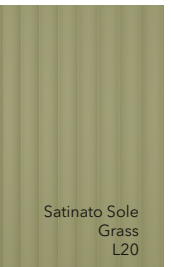
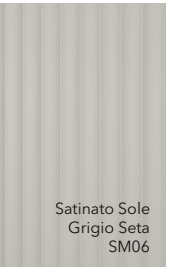
**SATIN GLASS**   
Matt safety glass



**SATINATO SOLE**



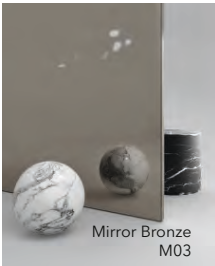
Safe embossed frosted glass Sole.  
Painting on specialized equipment in production conditions.



**MIRROR**



Polished mirrors



ALUMINIUM

AL09 - is a high-quality anodized electrochemical coating.  
AL02 - AL08 /AL31- AL38. Polymer painting with powder paints in an electrostatic field.



PORTOFINO TEXTILE

High-strength, wear-resistant tissues

PIANO



VERONA



Via Flavio Baracchini, 2 - 20100 Milano (Italia)  
+34 600 309731 | +7 915 1557851  
info@unionporte.it  
www.unionporte.it



UNION reserves the right to make changes that do not impair quality to the products presented in this catalog at any time without prior notice. The company is not responsible for incomplete similarity between the originals and the samples in the catalog. Colors and finishes shown in the sample catalog may differ from the original. For more detailed information or to get acquainted with real samples of color solutions / finishes, we recommend contacting the showrooms of the company.

- Instagram  uniondoors
- Pinterest  uniondoors
- Archiproducts  union



+34 600 309731  
info@unionporte.it  
www.unionporte.it