





Since 1990 up today UNION company is the market leader in the production of doors and furniture.

UNION always strive for excellence, concentrating its efforts on finding new ideas, implementing European quality standards, enlarging the product range and introducing the latest trends in architecture and interior design.

Being an expert in interior doors and partitions development, in 2020 UNION launched to the market a new comprehensive approach to interior design.

The concept of "Doors and furniture in the same style" was developed by Italian architects on request and in collaboration with UNION. This solution makes easier implementation the ideas of architects working out an interior and guarantees the stylistic unity of all elements in the design project.

\ Modern doors

FILO-60	16
UNIFLEX-3D	28
UNIX-60	32
LAGO-60	34
SLIM	40
TONDA	44
PIVOT	46

\ Traditional doors

TREND	48
ALDA	49
LEVEL	50
CORDA	51
GRAND	52
PRIMA	53
STELLA	54

\ Metal entrance doors

DELTApro	55
----------	----

\ Sliding doors and partitions

SLIDER	56
MAGIC	57
STRATUS	58
LIBRO	72
TRANSFORMER	73
WALLSTREET	74

\ Wall panels

COVER	76
-------	----

\ Walk-in closets and storage systems

LUMINA	81
ALTO	82
FORMINA	90
LAGUNA	94

\ Mirrors

ALBA	96
------	----

\ Dressers and showcases

MIRAGE	98
MATEO	100
VITRUM	102

\ Dining and coffee tables

MILAN	104
LOTUS	107

\ Modular sofas

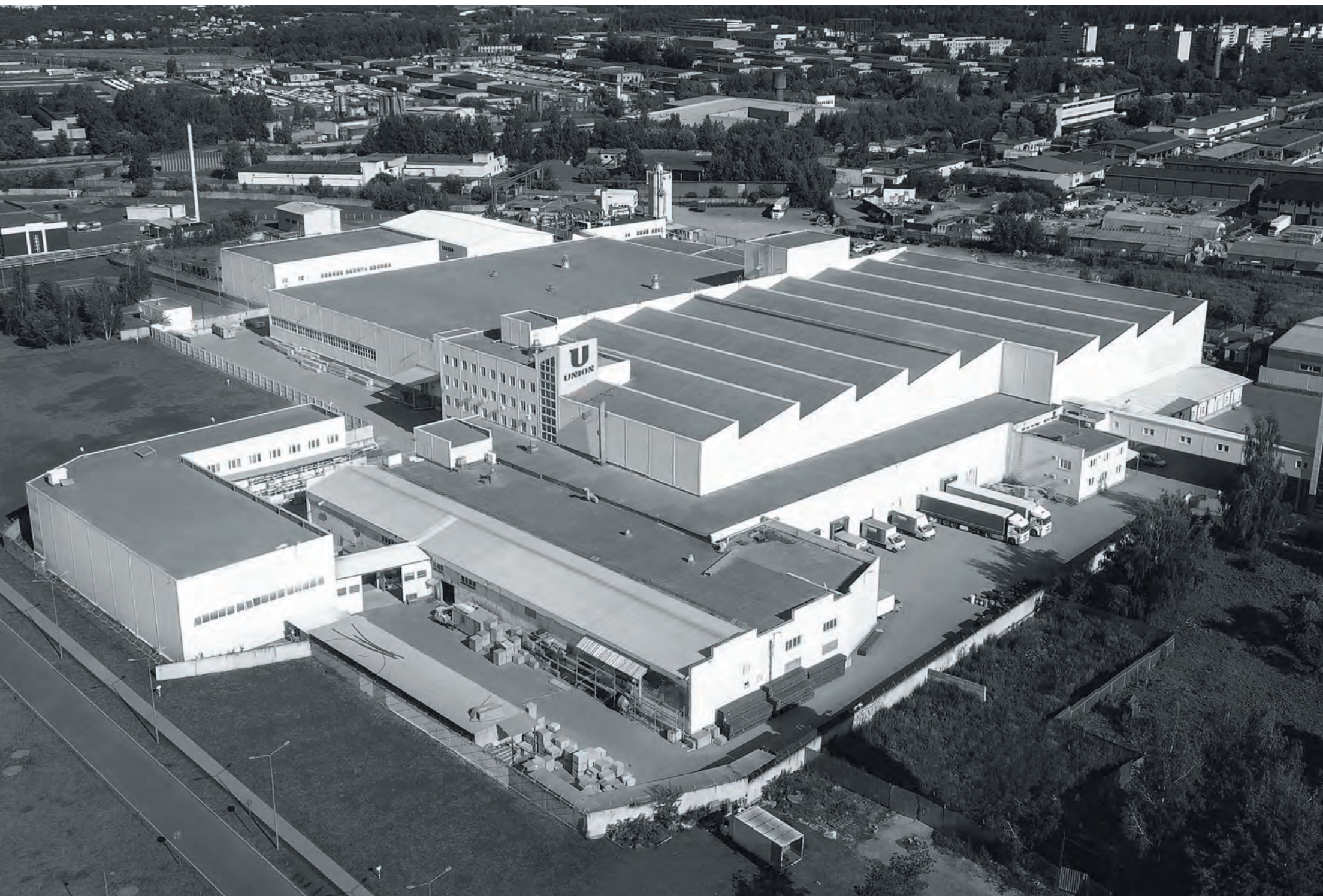
PORTOFINO	108
-----------	-----

\ Skirting boards

\ UNION CONTRACT

\ Fittings and accessories

\ Materials and finishes

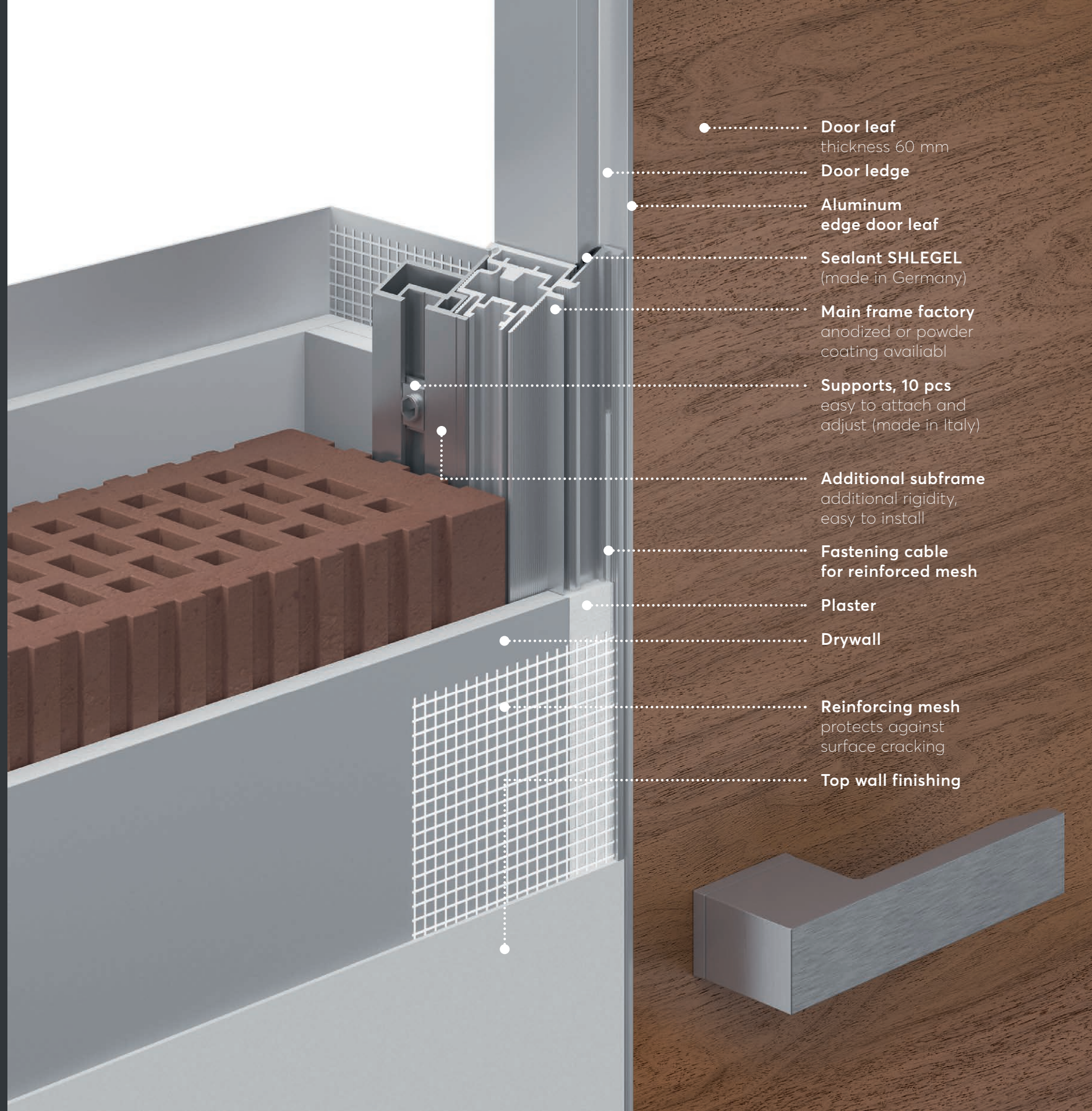




UNION company production was established according to the project of Italian architects based on the latest achievements of the Italian furniture industry. Our advanced production complex operates on more than 40,000 sqm and equipped with modern Italian and German hardware matching fulfillment of any complexity orders in the required volume. Majoring the implementation of complex interior solutions, the UNION company has reached the highest level of the development, thanks to the knowledge of the Italian door and furniture manufacturing traditions, the involve of European experience, technologies and equipment, as well as understanding the customers needs and constant improvement of products and services.

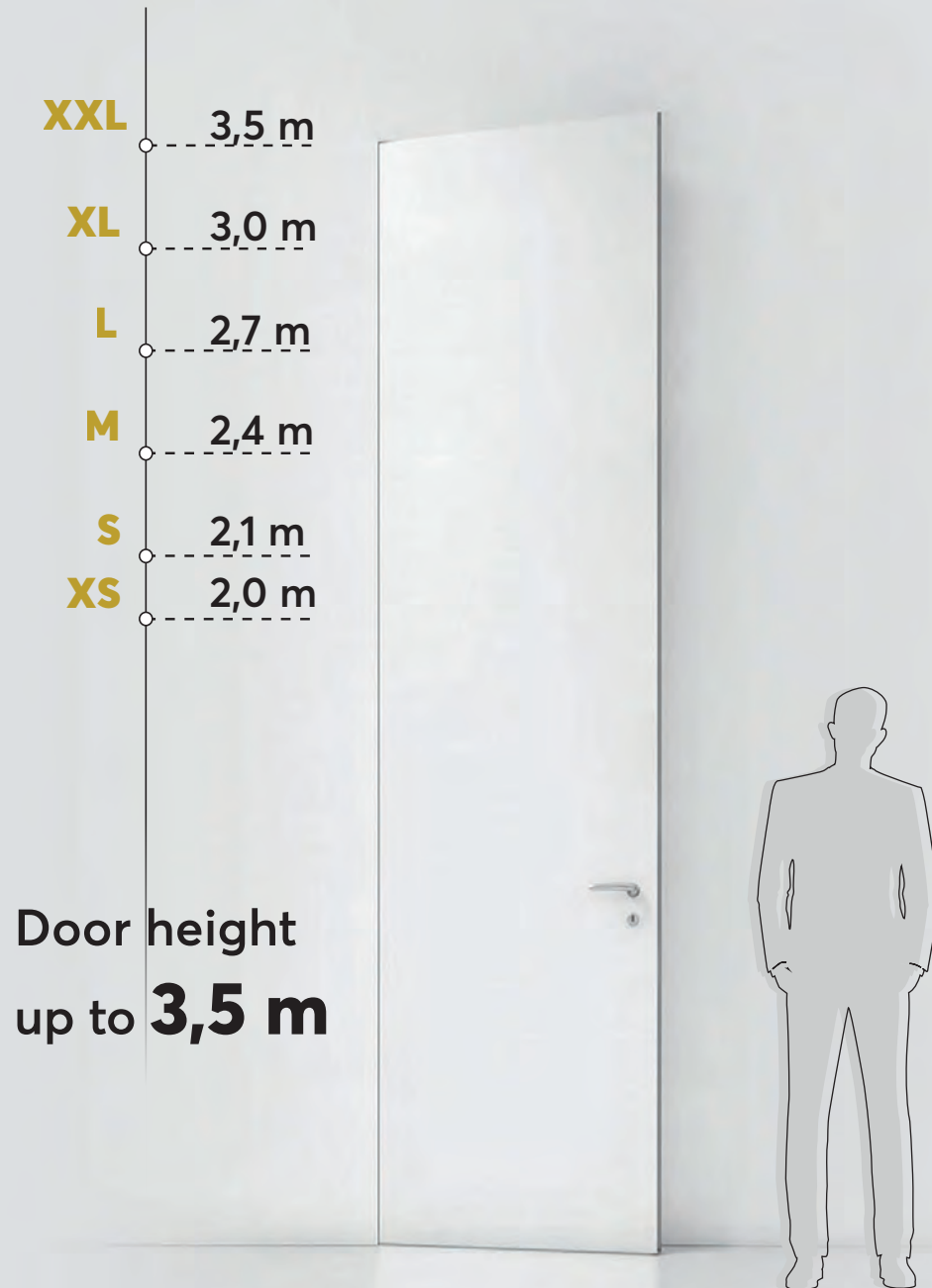
Concealed door frame  
**INVISIBLE**

Patent UNION



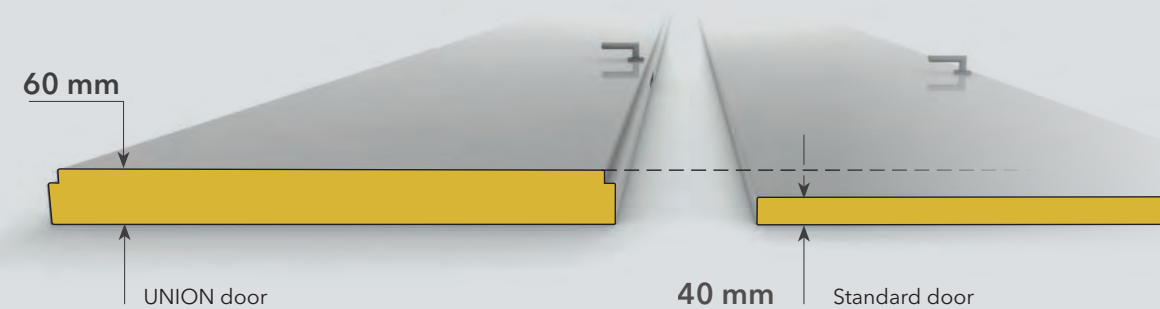
- ..... Door leaf  
thickness 60 mm
- ..... Door ledge
- ..... Aluminum  
edge door leaf
- ..... Sealant SHLEGEL  
(made in Germany)
- ..... Main frame factory  
anodized or powder  
coating availiabl
- ..... Supports, 10 pcs  
easy to attach and  
adjust (made in Italy)
- ..... Additional subframe  
additional rigidity,  
easy to install
- ..... Fastening cable  
for reinforced mesh
- ..... Plaster
- ..... Drywall
- ..... Reinforcing mesh  
protects against  
surface cracking
- ..... Top wall finishing

# SIZE MATTERS



Thickness of UNION door  
up to **60 mm**

It's **50%** thicker  
than an standard door

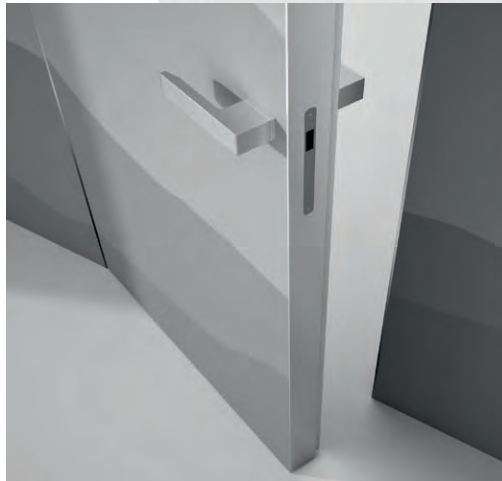




01

**Always in stock.  
Invisible doors ready  
to for painting**

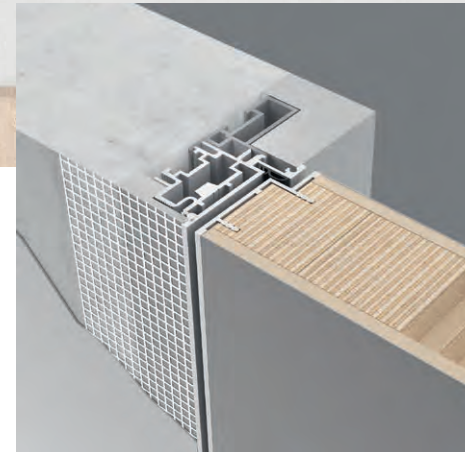
Always in stock, ready for quick shipment, unique FILO-60, Fondo doors with 60mm thickness in standard sizes 60/70/80 x 200/210/240 cm.



02

**Important advantage -  
door leaf thickness**

As a rule, the door leaf thickness of other manufacturers does not exceed 40 mm. The leaf thickness of UNION doors is 60 mm. Such doors have better sound insulation and durability. Besides all, they look prestigious and give the solidity to the interior.



03

**Hidden frame with false frame**

Hidden INVISIBLE frame is totally made from aluminum and it is reinforced by false frame - the additional secondary profile. That's the main difference between the constructions of UNION hidden frames from any standard hidden frames in a market. The rigid reliable construction is designed for long and intensive operation, including for heavy doors. Initially the frame is anodized in silver aluminum, but it can be also painted in a wall color or in any color according to the factory catalogue.

04

**Height up to 3.5 meters**

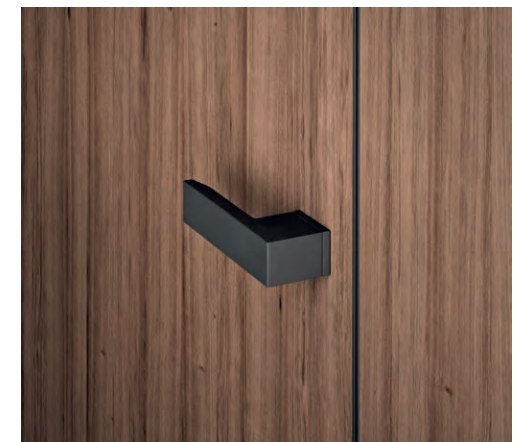
Modern trend, relevant for interiors made in different design. They lift up the ceilings, visually enlarge the room space. Reinforced frame and door leaf structure provides the strength and stability during a long-term operation.



05

**Complanarity**

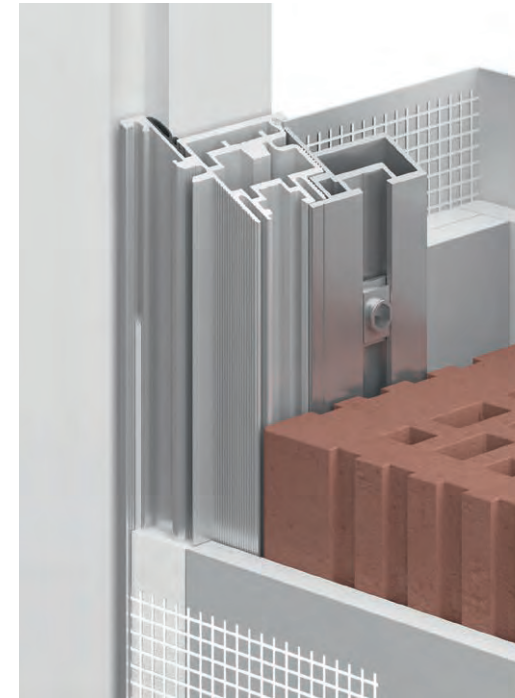
INVISIBLE hidden frame is integrated in a wall and creates one plane at "pull opening" and "push opening" door. Moreover, it's convenient to add the wall panels from different materials (from wood to glass) to this frame. In any case the complanarity has place - the solidity of surface with wall without protuberances.





## 06 Wall thickness

There are thin walls made from special materials in construction of some buildings. INVISIBLE frame is ideal for wall mounting from 6 cm thickness. The frame is installed in a thin wall without using a false frame and fixed via frame profile.



## 09 Support

There are longitudinal grooves in the profile of the false frame. The tool carriages are installed in these grooves. It is a special fixing device that allows adjusting quickly the frame position by level and then fastening securely the whole construction. It accelerates and simplifies the installation process. Minimum 4 tool carriages are installed in each vertical wall stand of INVISIBLE frame (there are always two of them).

## 07

### Delivery of the assembled frame

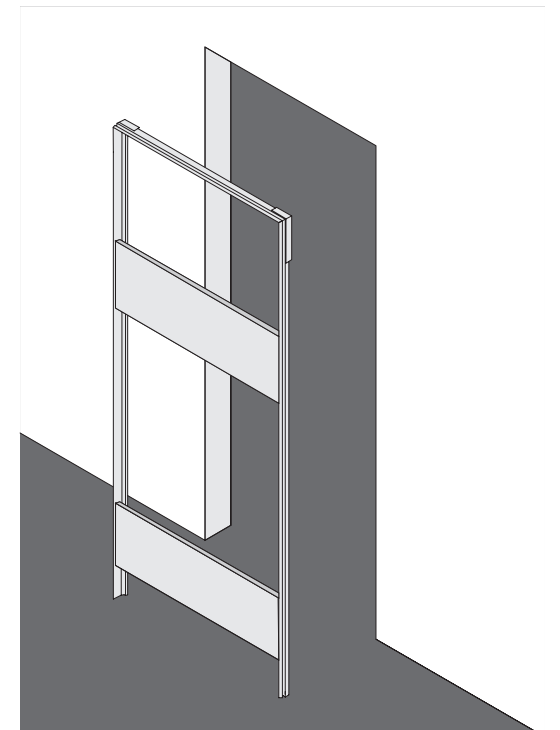
The INVISIBLE hidden frame can be delivered fully assembled. It means that the frame is assembled with fixed mounting bars ready to be installed in the doorway. The installers can only set it vertically and fix it to the slopes opening. Thus the installation becomes faster and easier.



## 10

### Suitable for standard doorways

According to international standards, the door's width 60, 70, 80 and 90 cm are standard. As a rule, many builders prepare the doorways exactly in accordance with those standards. UNION hidden frame doors are designed the way that their geometric dimensions fit into standard doorways that significantly reduce their cost.



## 08 Aesthetic mounting

The INVISIBLE frame design allows you to create a joint with the tiles, the porcelain tiles or other materials directly tightly, without additional transitional elements and visible gaps. Such a technical solution is specifically provided for doors on hidden frame of both internal and external opening.







# 11

## Humidity resistance

Aluminum INVISIBLE frame makes a door humidity resistant, in contrast to the doors on wood or MDF frame. UNION doors are not exposed to humidity during the wet cleaning or at the wet floor. They can be used in high humidity rooms without fear of wet support structure - the frame.



# 13

## Solidity of finishing

There is a very interesting and trendy option in UNION - the possibility of factory polymer painting in the same color of all metal elements of the door structures. The solidity of finishing of aluminum tip edge, frame and handles create a unique aesthetic integrity and laconism.

# 14

## Rabbeted door

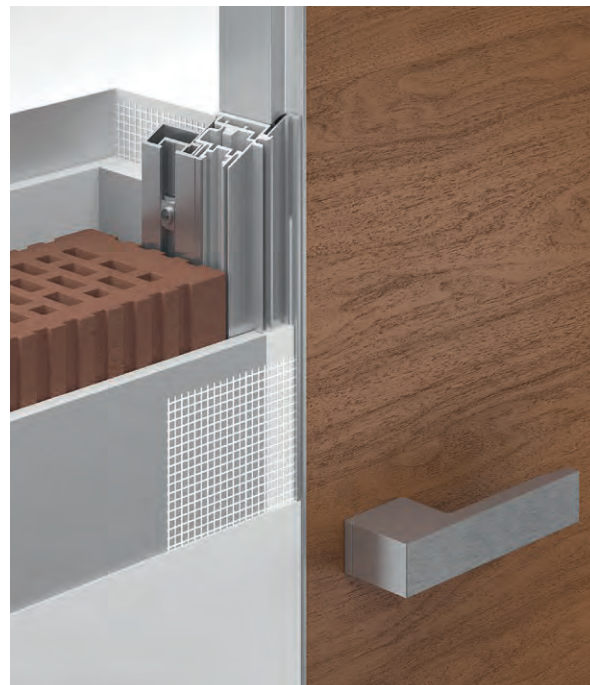
UNION produces the unique 60 mm doors with so-called rabbet ledge. Sometimes we use the terms "doors with groove" or "framed-and-ledged doors" instead of "rabbeted doors". Thanks to the ledge, the door leaf connects better to the frame that increases the sound and heat insulations. Due to the ledge the door becomes flush at different door handing - "pull opening" and "push opening". The ledge also prevents the light penetration in another room.



# 12

## Fabricability

INVISIBLE hidden frame are supplied with a special supporting net along the whole aluminum frame perimeter. This is the important detail when a wall is plastered close to the frame and then painted. The net simplifies the plastering process and excludes the cracks of the wall surface.



# 15

## Aluminum - Low footprint

Aluminum is a natural, eco-friendly and safe material that is not exposed to the environment. Such materials as wooden board, MDF have a number of fundamental defects - they trigger and swell on wetting. There are the doors with PVC elements in a market. This material is very harmful for humans.

# FILO-60

INVISIBLE DOORS



Concealed door in a classic interior



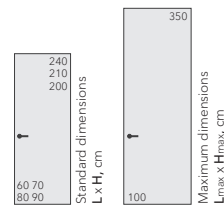
INVISIBLE frame



INVISIBLE Inverso frame



FILO-60, Piatto, L00 Fondo, AL09 Chrome Matt / INVISIBLE



- L

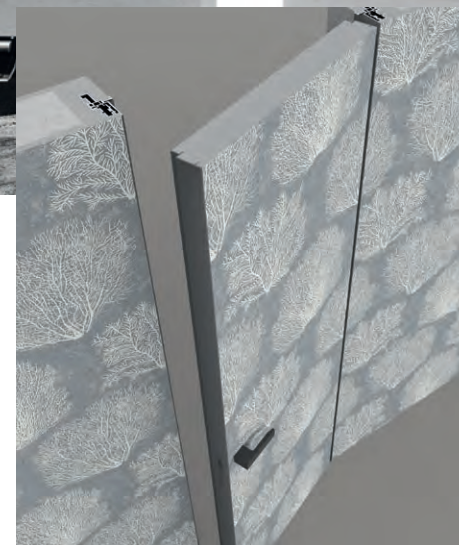
LACCATO MATT  
Matt  
enamels
- HP

HPL  
Composite  
material
- V

VENEER NATURAL  
Natural wood  
veneer
- LG

LACCATO GLOSS  
Gloss enamels
- AL

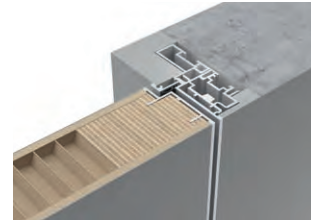
ALUMINIUM  
Anodised and  
polymer coatings



Wallpapering the door and the wall together

# FILO-60

MATTE AND GLOSSY ENAMELS



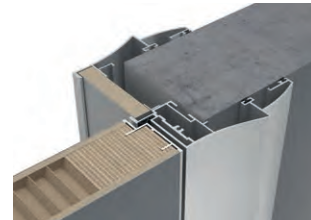
INVISIBLE frame



PLANAR frame



PLANAR frame with insert

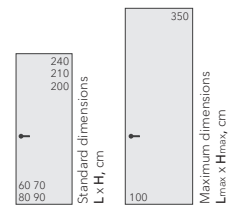


DECO frame








UNIDOOR frame

FILO-60, Piatto, L10 Nero, AL09 Chrome Matt / INVISIBLE



FILO-60, Piatto, LG11 Tortora Gloss, AL09 Chrome Matt / INVISIBLE

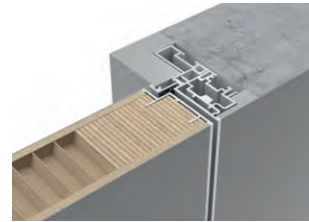
-   
**L**  
 LACCATO MATT  
 Matt  
 enamels
-   
**HP**  
 HPL  
 Composite  
 material
-   
**V**  
 VENEER NATURAL  
 Natural wood  
 veneer
-   
**LG**  
 LACCATO GLOSS  
 Gloss enamels
-   
**AL**  
 ALUMINIUM  
 Anodised and  
 polymer coatings

# FILO-60

COMPOSITE DECORATIVE MATERIAL



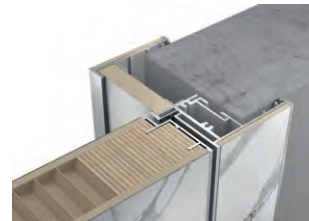
FILO-60, Piatto, HP06 Marmo Antracite, AL08 Black / INVISIBLE



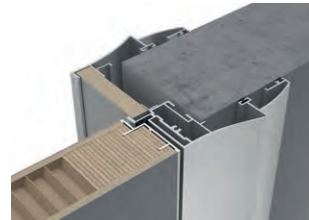
INVISIBLE frame



PLANAR frame



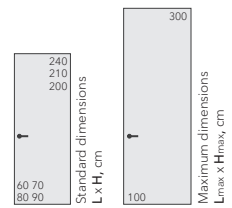
PLANAR frame with insert



DECO frame



FILO-60, Piatto, HP04 Marmo Bianco, AL09 Chrome Matt / INVISIBLE



- L

LACCATO MATT  
Matt enameled
- HP

HPL  
Composite material
- V

VENEER NATURAL  
Natural wood veneer
- LG

LACCATO GLOSS  
Gloss enameled
- AL

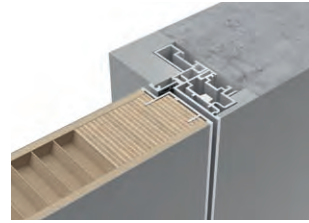
ALUMINIUM  
Anodised and polymer coatings

# FILO-60

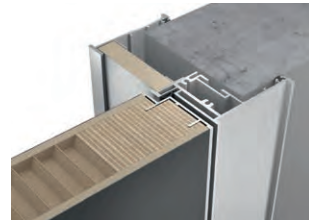
NATURAL WOOD VENEER



FILO-60, Vento, V10 Rovere Antico, AL08 Black / INVISIBLE



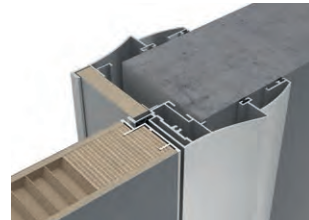
INVISIBLE frame



PLANAR frame



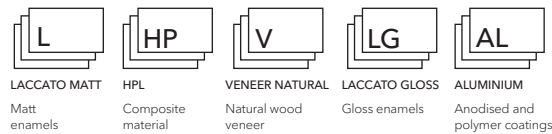
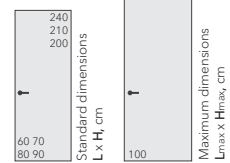
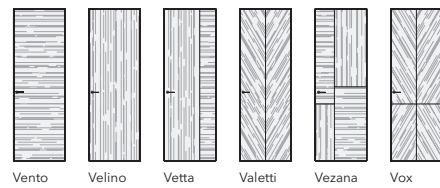
PLANAR frame with insert



DECO frame



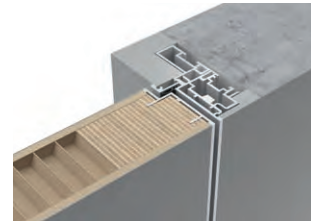
UNIDOR frame



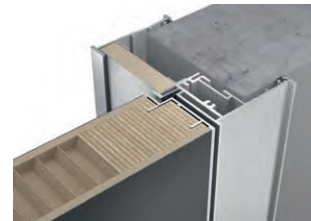
FILO-60, Alu, Vox, V28 Noce Nazionale, AL08 Black / INVISIBLE

# FILO-60

NATURAL WOOD VENEER



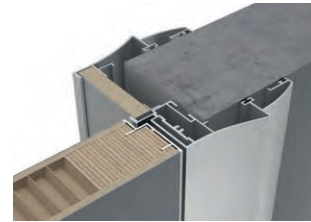
INVISIBLE frame



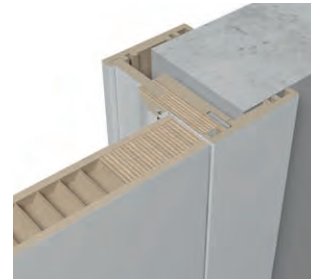
PLANAR frame



PLANAR frame with insert

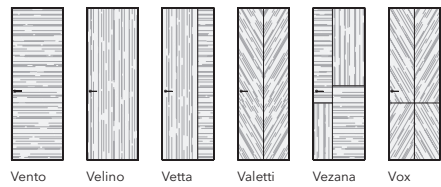


DECO frame



UNIDOOR frame

FILO-60, Vetta, V11 Rovere Tetro, AL09 Chrome Matt / INVISIBLE

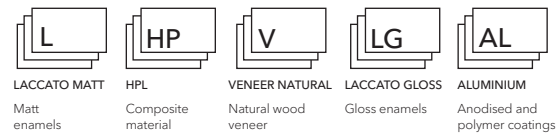


Standard dimensions  
L x H, cm

60 70  
80 90

Maximum dimensions  
L<sub>max</sub> x H<sub>max</sub>, cm

100 350



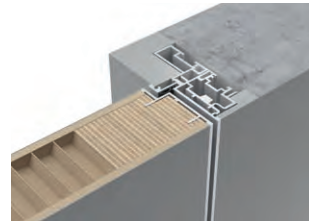
FILO-60, Alu, Valetti, V03 Ebano, AL08 Black / INVISIBLE

# FILO-60

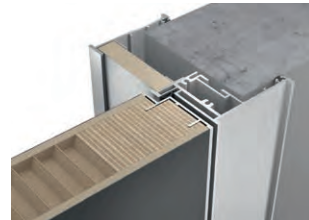
NATURAL WOOD VENEER



FILO-60, Vento, V16 Noce Canaletto, AL09 Chrome Matt / PLANAR ins.



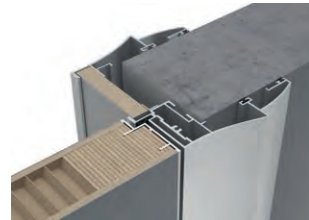
INVISIBLE frame



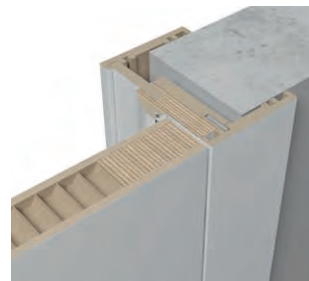
PLANAR frame



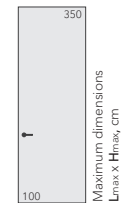
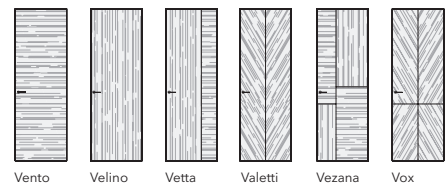
PLANAR frame with insert



DECO frame



UNIDOR frame



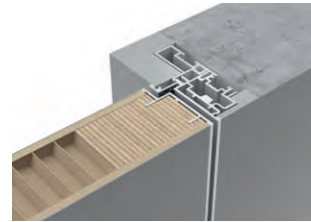
<b>L</b>	<b>HP</b>	<b>V</b>	<b>LG</b>	<b>AL</b>
LACCATO MATT	HPL	VENEER NATURAL	LACCATO GLOSS	ALUMINIUM
Matt enamels	Composite material	Natural wood veneer	Gloss enamels	Anodised and polymer coatings



FILO-60, Vento, V13 Rovere Cenere, AL08 Black / PLANAR

# UNIFLEX-3D

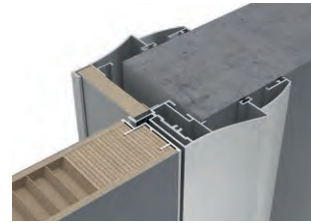
3D MILLING AND RELIEF PATTERN (SOLID, VENEER)



INVISIBLE frame



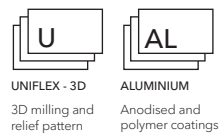
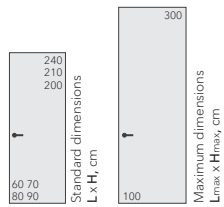
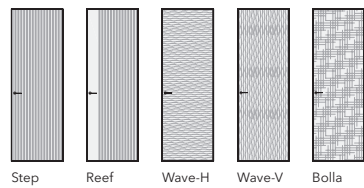
PLANAR frame



DECO frame



UNIFLEX-3D, Alu, Bolla, UB16 Noce Canaletto, AL08 Black / INVISIBLE

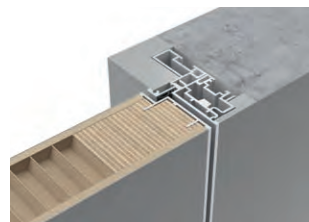


UNIFLEX-3D, Alu, Step, US16 Noce Canaletto, AL07 Dark Brown / PLANAR



# UNIFLEX-3D

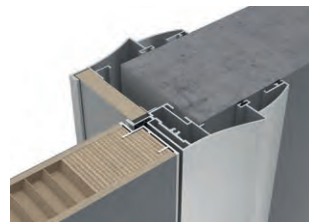
ОБЪЕМНАЯ ФРЕЗЕРОВКА 3D (МАССИВ, ШПОН)



INVISIBLE frame



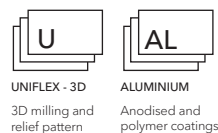
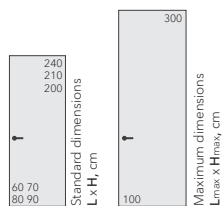
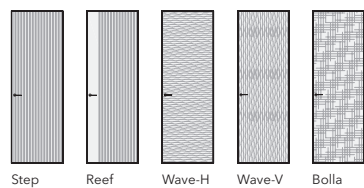
PLANAR frame



DECO frame



UNIFLEX-3D, Alu, Wave, UW16 Noce Canaletto, AL08 Black / INVISIBLE



UNIFLEX-3D, Alu, Reef, US16 Noce Canaletto, AL08 Black / INVISIBLE

# UNIX-60

AFFORDABLE QUALITY

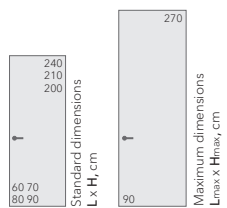


INVISIBLE frame



PLANAR frame

UNIX-60, Piatto, DC06 Noce Chiaro, AL08 Black / INVISIBLE



UNIX-60, Piatto, DC05 Noce Scuro, AL04 Soft Bronze / PLANAR



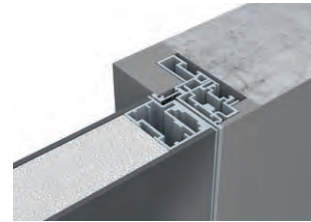
DECORIT  
Decorative  
material



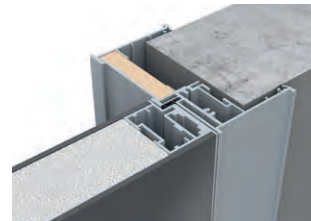
ALUMINIUM  
Anodised and  
polymer coatings

# LAGO-60

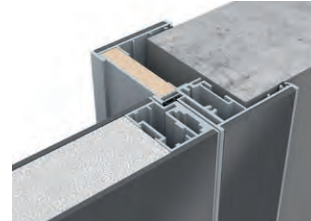
DOUBLE GLASS IN AN REFINED FRAME



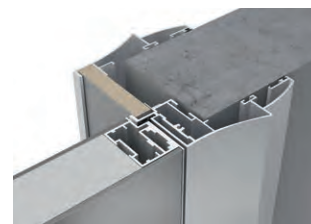
INVISIBLE frame



PLANAR frame

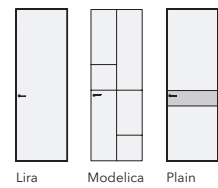


PLANAR frame with insert

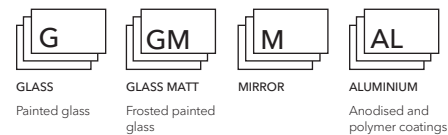
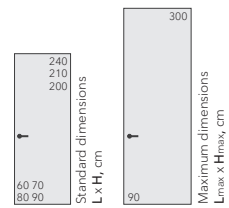


DECO frame

LAGO-60, Lira, G01 Bianco, AL09 Chrome Matt / INVISIBLE



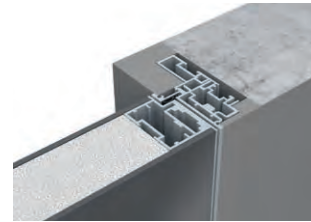
Lira Modelica Plain



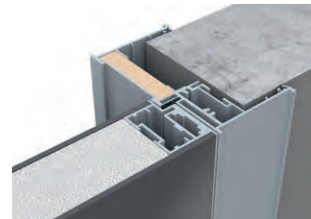
LAGO-60, Lira, G10 Nero, AL09 Chrome Matt / INVISIBLE

# LAGO-60

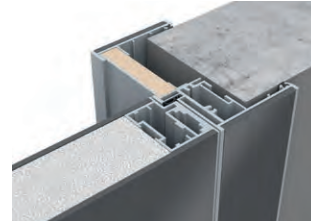
DOUBLE GLASS IN AN REFINED FRAME



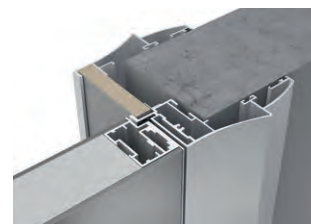
INVISIBLE frame



PLANAR frame

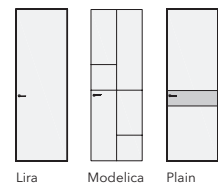


PLANAR frame with insert

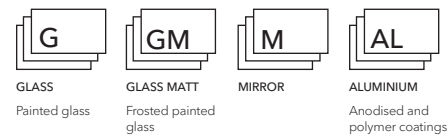
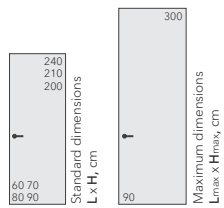


DECO frame

LAGO-60, Plain, G10 Nero, M04 Mirror Antic Gold, AL03 Soft Gold / INVISIBLE



Lira Modelica Plain



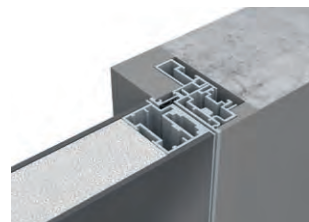
LAGO-60, Modelica, G06 Grigio Seta, AL08 Black / INVISIBLE

# LAGO-60

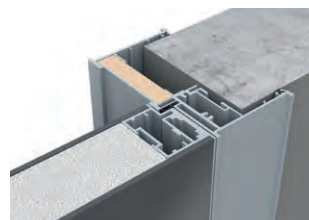
DOUBLE GLASS IN AN REFINED FRAME



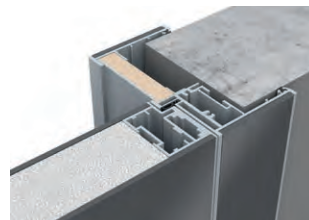
LAGO-60, Lira, G13 Rocca, AL09 Chrome Matt / PLANAR ins.



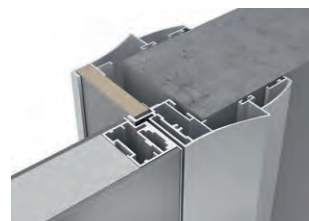
INVISIBLE frame



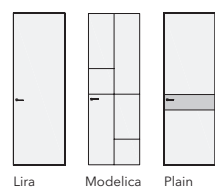
PLANAR frame



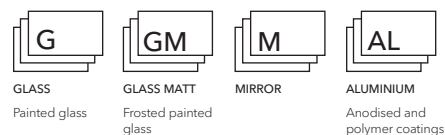
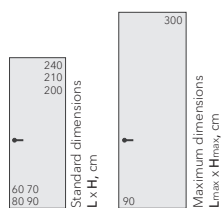
PLANAR frame with insert



DECO frame



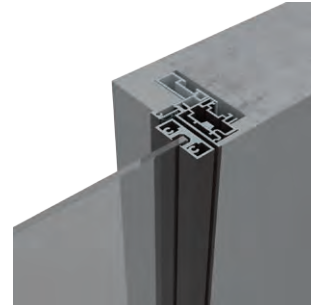
Lira Modelica Plain



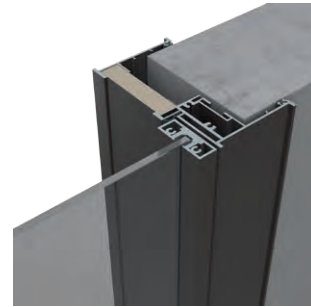
LAGO-60, Modelica, G10 Nero, AL04 Soft Bronze / DECO

# SLIM

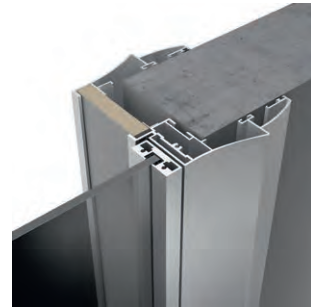
DECORATIVE GLASS IN ALUMINIUM STRUCTURES



INVISIBLE frame

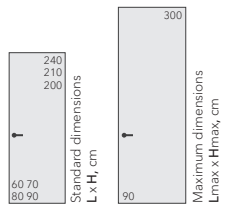
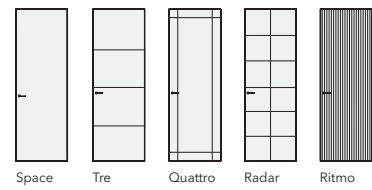


PLANAR frame



DECO frame

SLIM, Space, GT05 Sole, AL08 Black / INVISIBLE

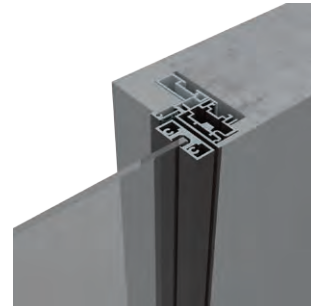


SLIM, Ritmo, GT03 Trasparente Bronzo, AL08 Black / INVISIBLE

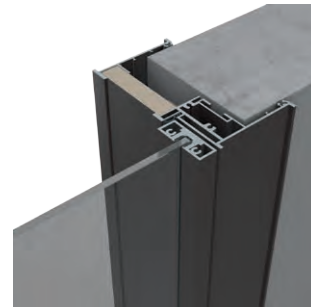


# SLIM

DECORATIVE GLASS IN ALUMINIUM STRUCTURES



INVISIBLE frame



PLANAR frame

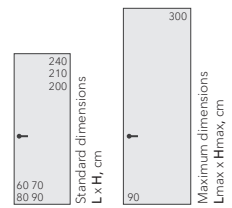
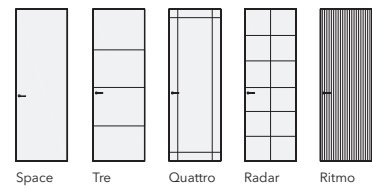


DECO frame

SLIM, Tre, GT02 Trasparente Grafite, AL08 Black / INVISIBLE

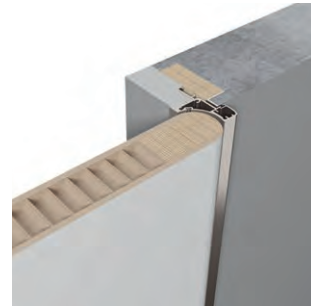


SLIM, Radar, GT02 Trasparente Grafite, AL08 Black / INVISIBLE



# TONDA

PREMIUM DOORS WITH ROUNDED EDGES



TONDA frame without adjustment

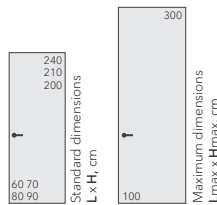


TONDA frame with adjustment

TONDA, Tirol, LG01 Bianco Gloss, AL08 Black



Tirol



LACCATO MATT  
Matt  
enamels



LACCATO GLOSS  
Gloss  
enamels



ALUMINIUM  
Anodised and  
polymer coatings



TONDA, Tirol, LG01 Bianco Gloss, AL08 Black



# PIVOT

PIVOTING DOORS



PIVOT-SLIM, Tre, GT01 Trasparente, AL08 Black



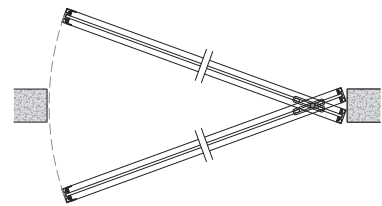
PIVOT-SLIM



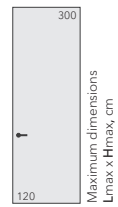
PIVOT-LAGO



PIVOT-FILO



PIVOT. Fixing in the "closed" and "opened" positions on both sides.



- |                              |                           |                                       |                                |   |                              |                                     |                   |             |          |
|------------------------------|---------------------------|---------------------------------------|--------------------------------|---|------------------------------|-------------------------------------|-------------------|-------------|----------|
| <b>L</b>                     | <b>HP</b>                 | <b>V</b>                              | <b>LG</b>                      | <b>U</b>                                      | <b>G</b>                     | <b>GM</b>                           | <b>GT</b>         | <b>GS</b>   | <b>M</b> |
| LACCATO MATT<br>Matt enamels | HPL<br>Composite material | VENEER NATURAL<br>Natural wood veneer | LACCATO GLOSS<br>Gloss enamels | UNIFLEX - 3D<br>3D milling and relief pattern | GLASS<br>Gloss painted glass | GLASS MATT<br>Frosted painted glass | TRANSPARENT GLASS | SATIN GLASS | MIRROR   |



PIVOT-FILO, Alu, Step, US16 Noce Canaletto, AL08 Black

# TREND

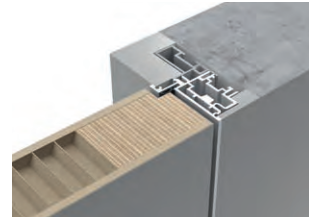
TRADITIONAL DOORS



TREND-45, TR18, L06 Grigio Seta, AL08 Black / UNIDOOR



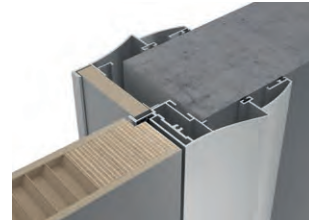
TREND-45, UNIDOOR frame



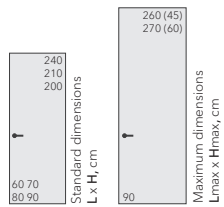
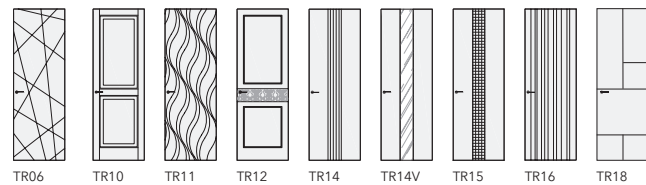
TREND-60, INVISIBLE frame



TREND-60, PLANAR frame



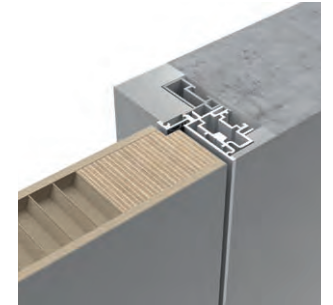
DECO frame



ALDA-45, 101, L01 Bianco / UNIDOOR



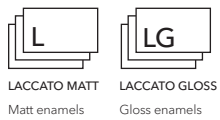
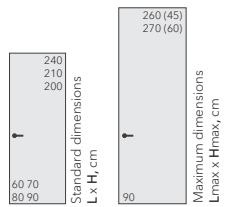
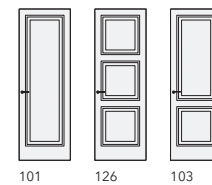
ALDA-45, UNIDOOR frame



ALDA-60, INVISIBLE frame



ALDA-60, PLANAR frame

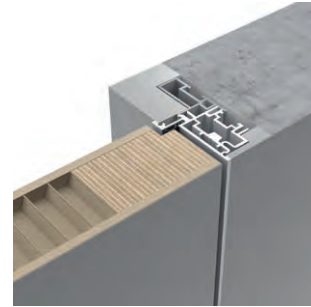


# LEVEL

TRADITIONAL DOORS



LEVEL-45, UNIDOOR frame

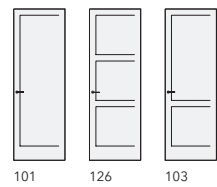


LEVEL-60, INVISIBLE frame

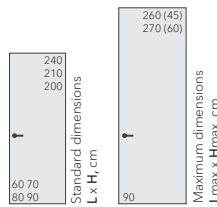


LEVEL-60, PLANAR frame

LEVEL-45, 101, L01 Bianco / UNIDOOR

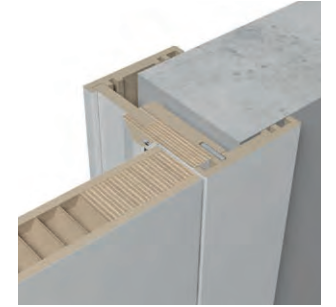


101 126 103



# CORDA

CLASSIC STYLE DOORS

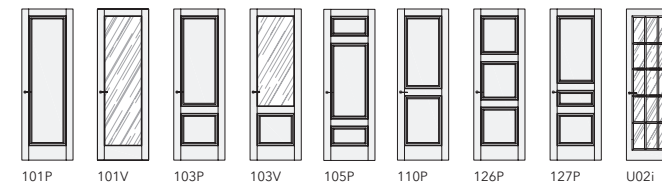


CORDA-45, UNIDOOR frame

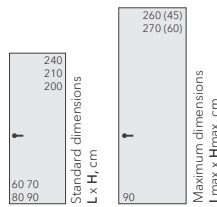


CORDA-60, INVISIBLE frame

CORDA-45, 127P, L01 Bianco / UNIDOOR



101P 101V 103P 103V 105P 110P 126P 127P U02i



LACCATO MATT  
Matt enamels



LACCATO MATT  
Matt enamels



TRANSPARENT  
GLASS



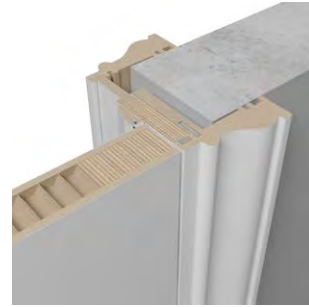
SATIN GLASS

# GRAND

CLASSIC STYLE DOORS



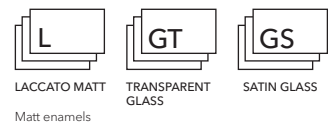
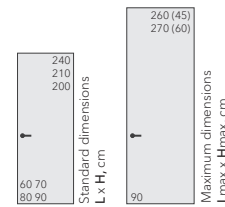
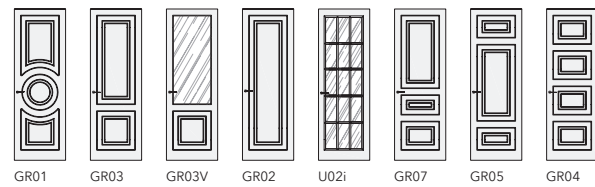
GRAND-45, GR01, L01 Bianco / UNIDOOR



GRAND-45, UNIDOOR frame



GRAND-60, INVISIBLE frame



L  
LACCATO MATT  
Matt enamels

GT  
TRANSPARENT  
GLASS

GS  
SATIN GLASS

# PRIMA

ТРАДИЦИОННАЯ КЛАССИКА



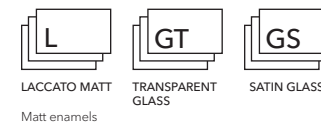
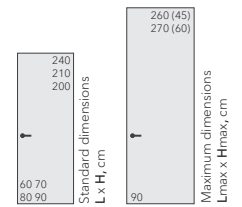
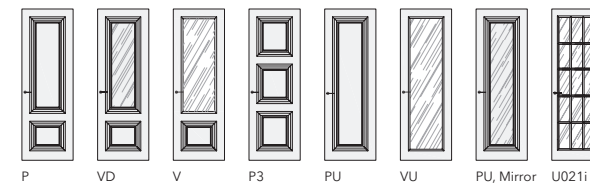
PRIMA-45, P, L01 Bianco / UNIDOOR



PRIMA-45, UNIDOOR frame



PRIMA-60, INVISIBLE frame



L  
LACCATO MATT  
Matt enamels

GT  
TRANSPARENT  
GLASS

GS  
SATIN GLASS

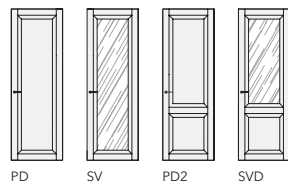
# STELLA

CLASSIC STYLE DOORS

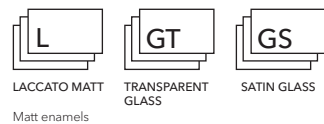
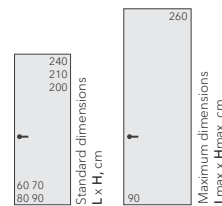


UNIDOOR frame

STELLA, PD, L01 Bianco / UNIDOOR



PD SV PD2 SVD



LACCATO MATT  
Matt enamels

GT  
TRANSPARENT  
GLASS

GS  
SATIN GLASS

# DELTApro

METAL ENTRANCE DOORS



DELTApro with front panel  
HP06 Marmo Antracite

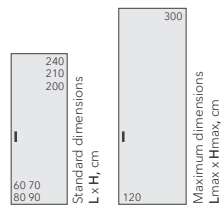
# SLIDER

SLIDING POCKET DOORS AND PARTITIONS



1. SLIDER-FILO, L00 Fondo

2. MINI, L00 Fondo



- L**  
LACCATO MATT  
Matt enamels
- HP**  
HPL  
Composite material
- V**  
VENEER NATURAL  
Natural wood veneer
- LG**  
LACCATO GLOSS  
Gloss enamels
- U**  
UNIFLEX - 3D  
3D milling and relief pattern
- G**  
GLASS  
Gloss painted glass
- GM**  
GLASS MATT  
Frosted painted glass
- GT**  
TRANSPARENT GLASS
- GS**  
SATIN GLASS
- M**  
MIRROR

# MAGIC

INVISIBLE SLIDING DOOR SYSTEM



MAGIC-FILO, Alu, Vento V17 Rovere Chiaro, AL09 Chrome Matt



- L**  
LACCATO MATT  
Matt enamels
- HP**  
HPL  
Composite material
- V**  
VENEER NATURAL  
Natural wood veneer
- LG**  
LACCATO GLOSS  
Gloss enamels
- U**  
UNIFLEX - 3D  
3D milling and relief pattern
- G**  
GLASS  
Gloss painted glass
- GM**  
GLASS MATT  
Frosted painted glass
- M**  
MIRROR
- AL**  
ALUMINIUM  
Anodised and polymer coatings

# STRATUS

SLIDING DOORS AND PARTITIONS



STRATUS-LAGO, Lira, G13 Rocca, AL08 Black / Pm22



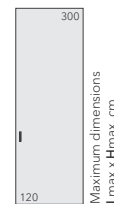
ceiling track

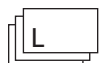

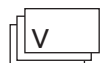

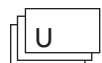







build-in track



wall track



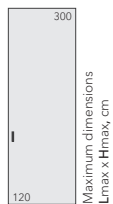
- |  |   |   |   |   |   |   |   |  |   |
|--|---|---|---|---|---|---|---|--|---|
|  |  |  |  |  |  |  |  |  |  |
| LACCATO MATT   | HPL   | VENEER NATURAL  | LACCATO GLOSS   | UNIFLEX - 3D  | GLASS   | GLASS MATT  | TRANSPARENT GLASS   | SATIN GLASS  | MIRROR  |
| Matt enamels   | Composite material  | Natural wood veneer   | Gloss enamels   | 3D milling and relief pattern   | Gloss painted glass   | Frosted painted glass   |   |  |   |



STRATUS-FILO, Alu, Vento, V22 Mogano, AL08 Black / Pm24

# STRATUS

SLIDING DOORS AND PARTITIONS



Maximum dimensions  
Lmax x Hmax, cm

- GT**  
TRANSPARENT GLASS
- GS**  
SATIN GLASS
- AL**  
ALUMINIUM  
Anodised and polymer coatings



1. STRATUS-SLIM, Space, GT02 Trasparente Grafite, AL08 Black / Pm24  
2. ALTO, H3710 ST12 Carini Walnut, AL08 Black

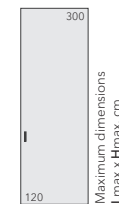


# STRATUS

SLIDING DOORS AND PARTITIONS



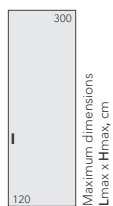
STRATUS-SLIM, Space, GT05 Sole, AL08 Black / S12N



**GT**  
TRANSPARENT  
GLASS

**GS**  
SATIN GLASS

**AL**  
ALUMINIUM  
Anodised and  
polymer coatings



Maximum dimensions  
L<sub>max</sub> x H<sub>max</sub>, cm

- GT

  
 TRANSPARENT  
GLASS
- GS

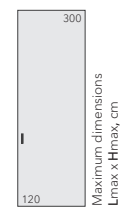
  
 SATIN GLASS
- AL

  
 ALUMINIUM  
 Anodised and  
polymer coatings

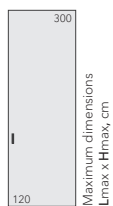
1. STRATUS-SLIM, Ritmo, GT02 Trasparente Grafite, AL08 Black / Pm23  
2. ALTO, H3710 ST12 Carini Walnut, AL08 Black



1. STRATUS-SLIM, Quattro, GS06 Stopsol Grafite, AL03 Soft Gold / P12
2. PORTOFINO, Zenit 26
3. ALTO, U201 ST9 Pebble Grey, AL03 Soft Gold
4. COVER, Valetti, V20 Noce Americano



 <b>GT</b> TRANSPARENT GLASS	 <b>GS</b> SATIN GLASS	 <b>AL</b> ALUMINIUM Anodised and polymer coatings
---------------------------------------	------------------------------	--



Maximum dimensions  
L<sub>max</sub> x H<sub>max</sub>, cm

-   
**GT**  
 TRANSPARENT  
 GLASS
-   
**GS**  
 SATIN GLASS
-   
**AL**  
 ALUMINIUM  
 Anodised and  
 polymer coatings

- 1. STRATUS-SLIM, Space, GT05 Sole, AL04 Soft Bronze / Pm23
- 2. MILAN, HP04 Marmo Bianco, AL04 Soft Bronze
- 3. LUMINA, GT02 Trasparente Grafite, AL04 Soft Bronze
- 4. COVER, Step, US16 Noce Canaletto



STRATUS-SLIM, Radar, GT02 Trasparente Grafite, AL08 Black / Pm22



STRATUS-SLIM, Tre, GT03 Trasparente Bronzo, AL03 Soft Gold / Pm23



# LIBRO

FOLDING SLIDING PARTITION WALLS



LIBRO-SLIM, Radar, GT02 Trasparente Grafite, AL08 Black



- GT**  
TRANSPARENT GLASS
- GS**  
SATIN GLASS
- AL**  
ALUMINIUM  
Anodised and polymer coatings

# TRANSFORMER

FOLDING SLIDING PARTITION WALLS



TRANSFORMER Vario, Velino, V16 Noce Canaletto



- L**  
LACCATO MATT  
Matt enamels
- HP**  
HPL  
Composite material
- V**  
VENEER NATURAL  
Natural wood veneer
- LG**  
LACCATO GLOSS  
Gloss enamels



installation to the wall



installation of transoms with each other



installation with door frame

WALLSTREET-LAGO, Lira, G15 Grafite, AL09 Chrome Matt



- |                              |                           |                                       |                                |   |                              |                                     |                   |             |          |
|------------------------------|---------------------------|---------------------------------------|--------------------------------|---|------------------------------|-------------------------------------|-------------------|-------------|----------|
| <b>L</b>                     | <b>HP</b>                 | <b>V</b>                              | <b>LG</b>                      | <b>U</b>                                      | <b>G</b>                     | <b>GM</b>                           | <b>GT</b>         | <b>GS</b>   | <b>M</b> |
| LACCATO MATT<br>Matt enamels | HPL<br>Composite material | VENEER NATURAL<br>Natural wood veneer | LACCATO GLOSS<br>Gloss enamels | UNIFLEX - 3D<br>3D milling and relief pattern | GLASS<br>Gloss painted glass | GLASS MATT<br>Frosted painted glass | TRANSPARENT GLASS | SATIN GLASS | MIRROR   |



WALLSTREET-SLIM, Space, GT02 Trasparente Bronzo, AL09 Chrome Matt



COVER, LG14 Ombra Gloss

- L

LACCATO MATT  
Matt  
enamels
- HP

HPL  
Composite  
material
- V

VENEER NATURAL  
Natural wood  
veneer
- LG

LACCATO GLOSS  
Gloss enamels
- U

UNIFLEX - 3D  
3D milling and  
relief pattern



- 1. COVER, Vento, V20 Noce Americano
- 2. LUMINA, GT02 Trasparente Grafite, AL08 Black





- 1. COVER, Step, US16 Noce Canaletto
- 2. UNIFLEX-3D, Alu, Step, US16 Noce Canaletto, AL08 Black / INVISIBLE
- 3. STRATUS, Alu, Step, US16 Noce Canaletto, AL08 Black / Pm22
- 4. ALTO, H3710 ST12 Carini Walnut, AL08 Black



1. Wall panels **PRIMA**, L01 Bianco  
2. **PRIMA**, P, L01 Bianco/ **UNIDOOR**



1. **LUMINA**, GT02 Trasparente Grafite, AL08 Black  
2. **COVER**, Bolla, UB16 Noce Canaletto



DECORIT  
Decorative  
material



ALUMINIUM  
Anodised and  
polymer coatings

ALTO, H3325 ST28 Gladstone Oak, GT02 Trasparente Grafite, AL08 Black

# ALTO

SHELVING AND BOOKCASES



ALTO, H3710 ST12 Carini Walnut, GT02 Trasparente Grafite, AL08 Black



DECORIT  
Decorative  
material



ALUMINIUM  
Anodised and  
polymer coatings



DECORIT  
Decorative  
material



ALUMINIUM  
Anodised and  
polymer coatings

1. ALTO, H3156 ST12 Corbridge Oak, GT02 Trasparente Grafite, AL04 Soft Bronze
2. MILAN, HP04 Marmo Bianco, AL04 Soft Bronze

# ALTO

SHELVING AND BOOKCASES



- 1. ALTO, H3710 ST12 Carini Walnut, GT02 Trasparente Grafite, AL08 Black
- 2. UNIFLEX-3D, Alu, Step, US16 Noce Canaletto, AL08 Black / INVISIBLE
- 3. COVER, Step, US16 Noce Canaletto
- 4. MILAN, V16 Noce Canaletto, AL08 Black



DECORIT  
Decorative  
material



ALUMINIUM  
Anodised and  
polymer coatings



DECORIT  
Decorative  
material



ALUMINIUM  
Anodised and  
polymer coatings

FORMINA, H3710 ST12 Carini Walnut, AL08 Black

# FORMINA

WARDROBES AND STORAGE SYSTEM



DECORIT  
Decorative  
material



ALUMINIUM  
Anodised and  
polymer coatings

FORMINA, H3710 ST12 Carini Walnut, GT02 Trasparente Grafite, AL08 Black



# LAGUNA

WARDROBES AND STORAGE SYSTEM



DECORIT  
Decorative material



ALUMINIUM  
Anodised and polymer coatings

LAGUNA, H3710 ST12 Carini Walnut, AL08 Black



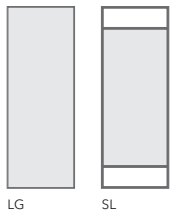
ALBA, LG, M01 Mirror, AL03 Soft Gold



ALBA, SL, M01 Mirror, AL08 Black

Standard dimensions  
L x H, cm

80x200  
70x180  
60x180



MIRROR



ALUMINIUM  
Anodised and  
polymer coatings



MIRAGE, MR-06, dresser-cabinets with drawers  
2022x503xh835



MIRAGE, MR-02, dresser-cabinets with glass shelves  
2022x503xh835



MATEO, MT-01, floor cabinet with drawers  
1010x503xh1571



MATEO, MT-03, floor cabinet with glass shelves  
1010x503xh2019



VITRUM, VT-02, hanging cabinet with drawer  
428x340xh1607



VITRUM, VT-01, hanging cabinet with glass shelves  
428x340xh1287



MILAN, Vox, V15 Rovere Tabacco, AL07 Dark Brown

- |                              |  |                      |   |
|------------------------------|--|----------------------|---|
| <b>HP</b>                    | <b>V</b>                                 | <b>GT</b>            | <b>AL</b>                                     |
| HPL<br>Composite<br>material | VENEER NATURAL<br>Natural wood<br>veneer | TRANSPARENT<br>GLASS | ALUMINIUM<br>Anodised and<br>polymer coatings |



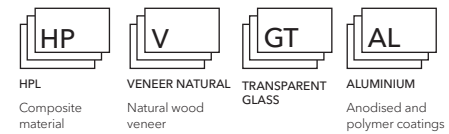
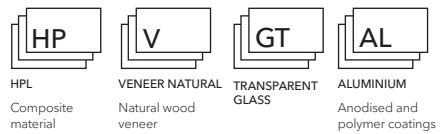
MILAN, GT01 Trasparente, Chrome



MILAN, HP05 Marmo Grigio, AL08 Black



LOTUS, GT02 Trasparente Grafite, Chrome



# PORTOFINO

MODULAR SOFAS



PORTOFINO, D.PR6L, Piano 4



PORTOFINO, PR.D3, Piano 5

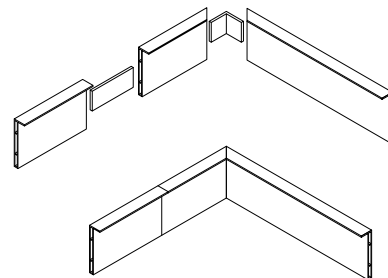
\* color palette of fabrics on pg.120



# SKIRTING BOARDS

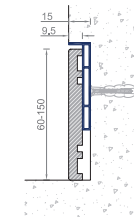


Concealed plinth **MINI**, вставка L01 Bianco



Connectors for plinth **MINI**

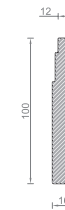
**MINI** with insert



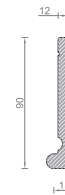
**NP9**



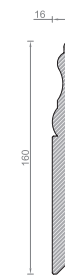
**NA10**



**GIOTTO**



**PRIMA**



**LACCATO MATT**  
Matt enamels



**VENEER NATURAL**  
Natural wood veneer

# UNION CONTRACT

PRODUCTION AND SUPPLY OF DOORS AND FURNITURE TO VARIOUS BIG PROJECTS

**UNION CONTRACT** is a division that deals with the contract supply of various doors, wall panels and furniture for hospitality, offices, medical and other institutions. Thanks to many years of experience and possessing a large-scale production with modern Italian equipment, the company is able to carry out any projects in set terms under efficient proposal and at reasonable prices.

WE OFFER manufacture and supply of:

- Interior doors and partitions of any design up to 3.5 m high
- Entrance and technical doors
- Fire rated doors
- Basic and non-standard cabinet furniture
- Interior decoration with wall panels
- Upholstered furniture





**BIG LINE, "made in EU"**  
Finishes - Aluminium (pp. 119)



**ROBOQUATTRO S, COLOMBO "made in ITALY"**  
Chrome Matt, Black, Chrome, White, Gold



Handle only



Handle with key PAT



Handle with WC lock



Handle with YALE lock



**MELODY, "made in EU"**  
Finishes - Aluminium (pp. 119)



**GIRA, COLOMBO "made in ITALY"**  
Chrome Matt



Latch CD 49, COLOMBO "made in ITALY",  
Chrome matt



Latch PT 19 BZG, COLOMBO, "made in ITALY",  
Chrome Matt, Black, Chrome, White, Gold



**SQUARE, "made in EU"**  
Finishes - Aluminium (pp. 119)



**PUNTO minimal, "made in ITALY"**  
Finishes - Aluminium (pp. 119)



Latch PUNTO WC, "made in ITALY"  
Finishes - Aluminium (pp. 119)



Latch 3045 RE, "made in EU"  
Finishes - Aluminium (pp. 119)



**CINTO, "made in EU"**  
Finishes - Aluminium (pp. 119)



**NAXOS, FORME "made in ITALY"**  
Chrome Matt, Black, Chrome, White



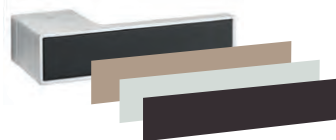
**POLARIS, AGB "made in ITALY"**  
Magnetic silent lock  
Chrome mat, Gold, Black, White



**HOOK, AGB "made in ITALY"**  
Lock for sliding door  
Chrome mat, Gold, Black, White

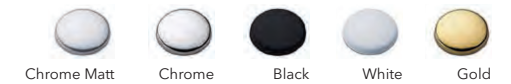


**BIG LINE with insert, "made in EU"**  
Finishes - Aluminium (pp. 119)

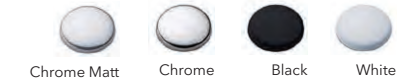


**BIG LINE handle insert finishes**  
are shown (pp. 108-118)

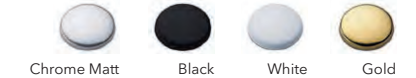
COLOMBO finishes

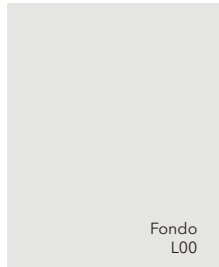


FORME finishes



AGB finishes

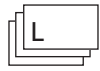




The finishing Fondo is a primer for subsequent painting in any colour with any effects

Fondo  
L00

**LACCATO MATT**



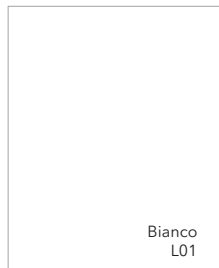
Painted with matt enamels in production environment on specialized equipment "made in ITALY".



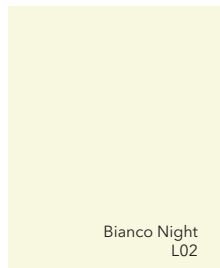
**LACCATO GLOSS**



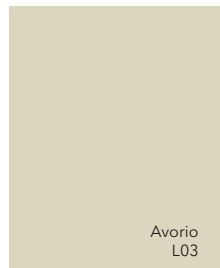
High quality 90 Gloss finish, achieved by applying 8 layers of lacquer and intermediate sanding on specialized equipment "made in ITALY".



Bianco  
L01



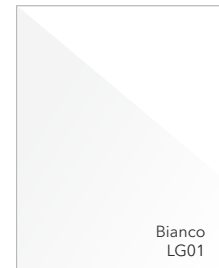
Bianco Night  
L02



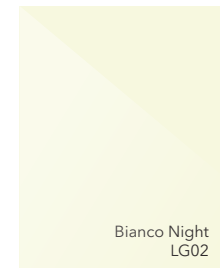
Avorio  
L03



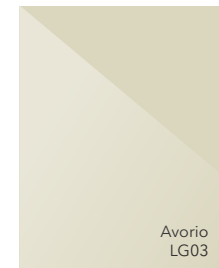
Grigio Seta  
L06



Bianco  
LG01



Bianco Night  
LG02



Avorio  
LG03



Grigio Seta  
LG06



Grigio Fume  
L07



Nero  
L10



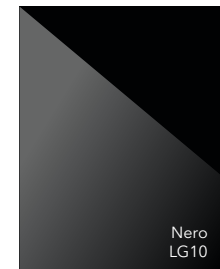
Tortora  
L11



Sabbia  
L12



Grigio Fume  
LG07



Nero  
LG10



Tortora  
LG11



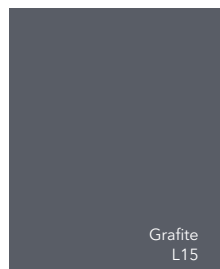
Sabbia  
LG12



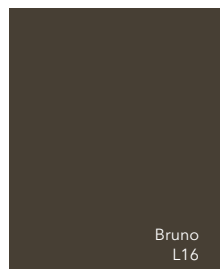
Rocca  
L13



Ombra  
L14



Grafite  
L15



Bruno  
L16



Rocca  
LG13



Ombra  
LG14



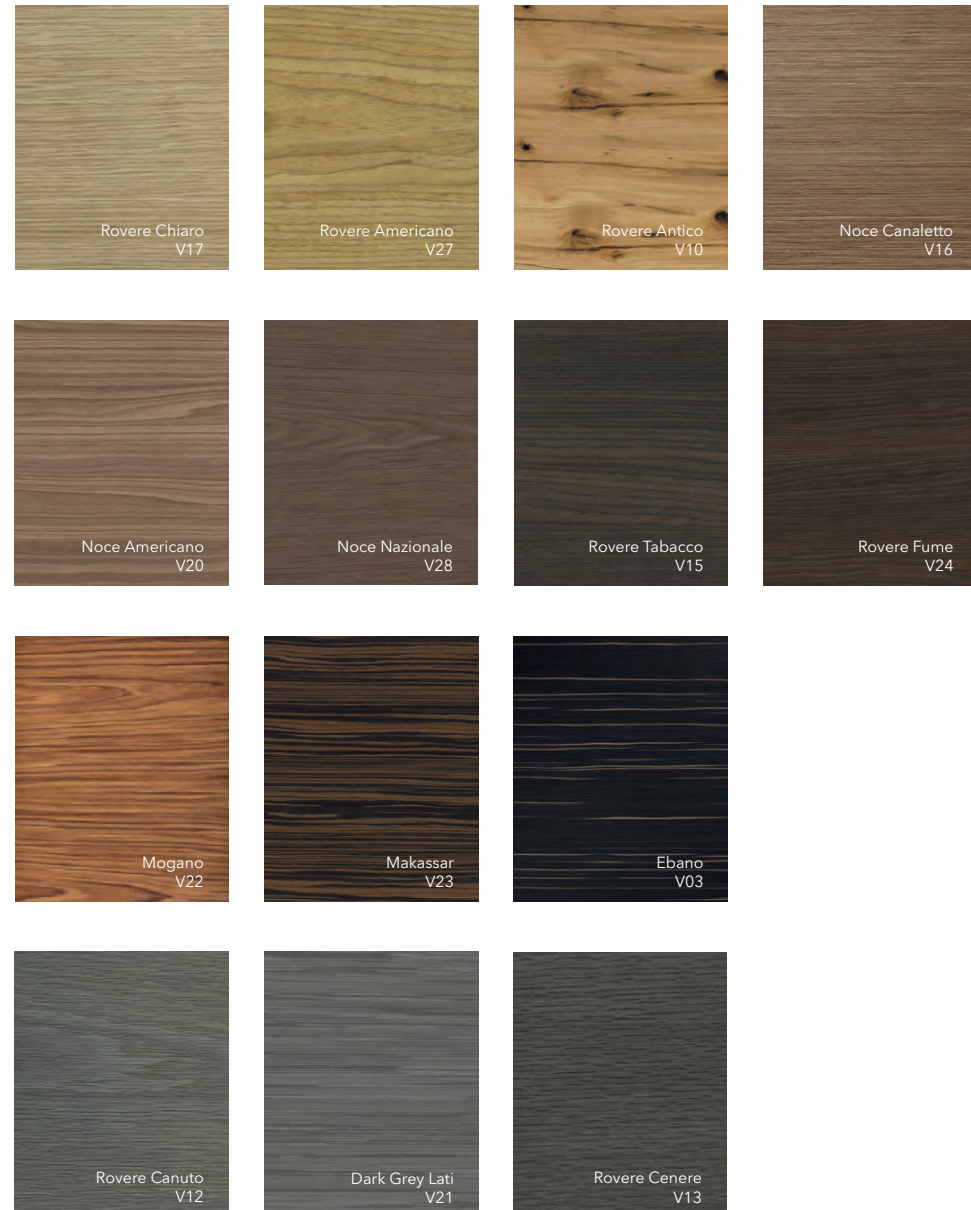
Grafite  
LG15



Bruno  
LG16

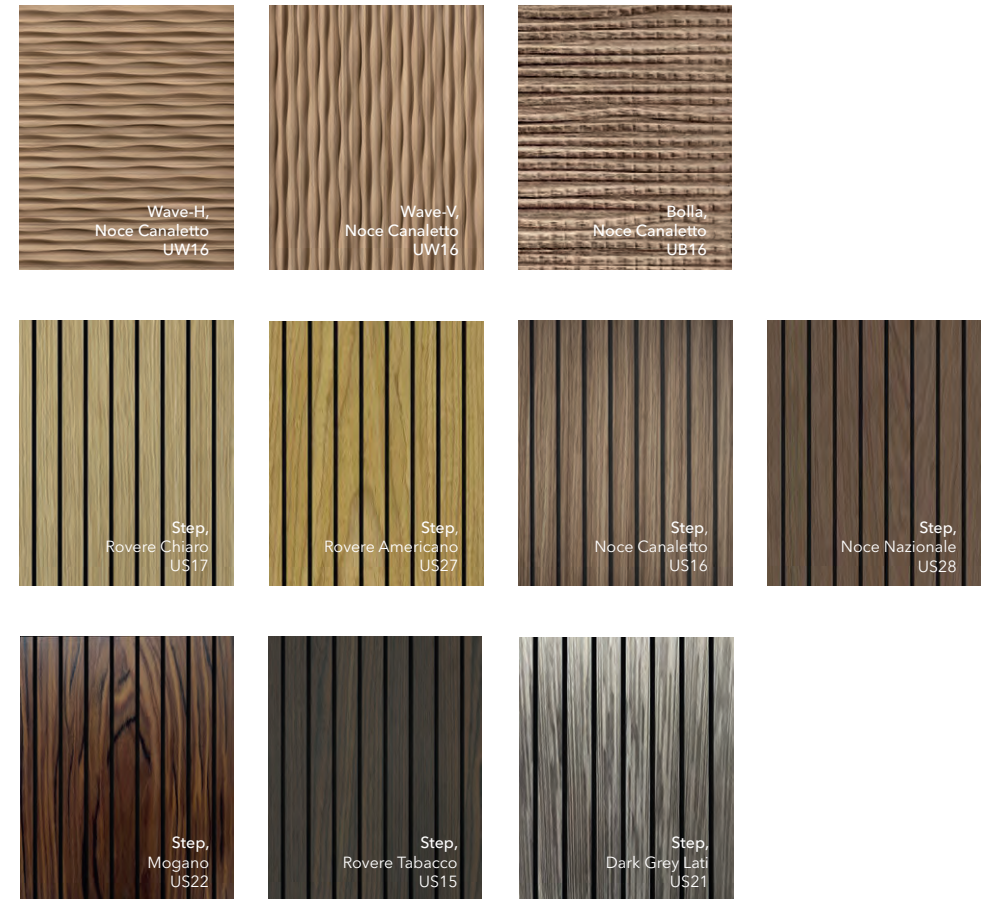
**VENEER NATURAL** 

Natural wood veneer with open pores matt lacquer finish

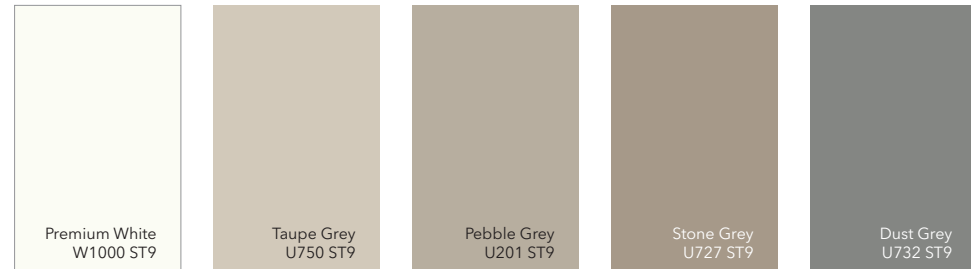


**UNIFLEX-3D** 

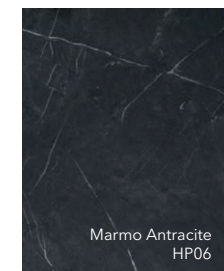
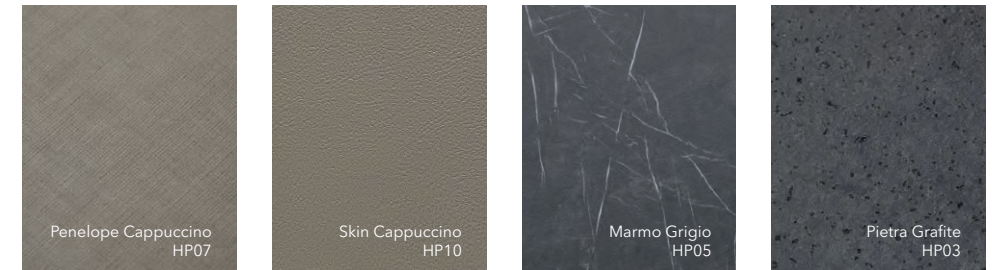
3D milling on solid lamella and relief pattern on natural veneer



**DECORIT**   
Abrasion-resistant decorative material



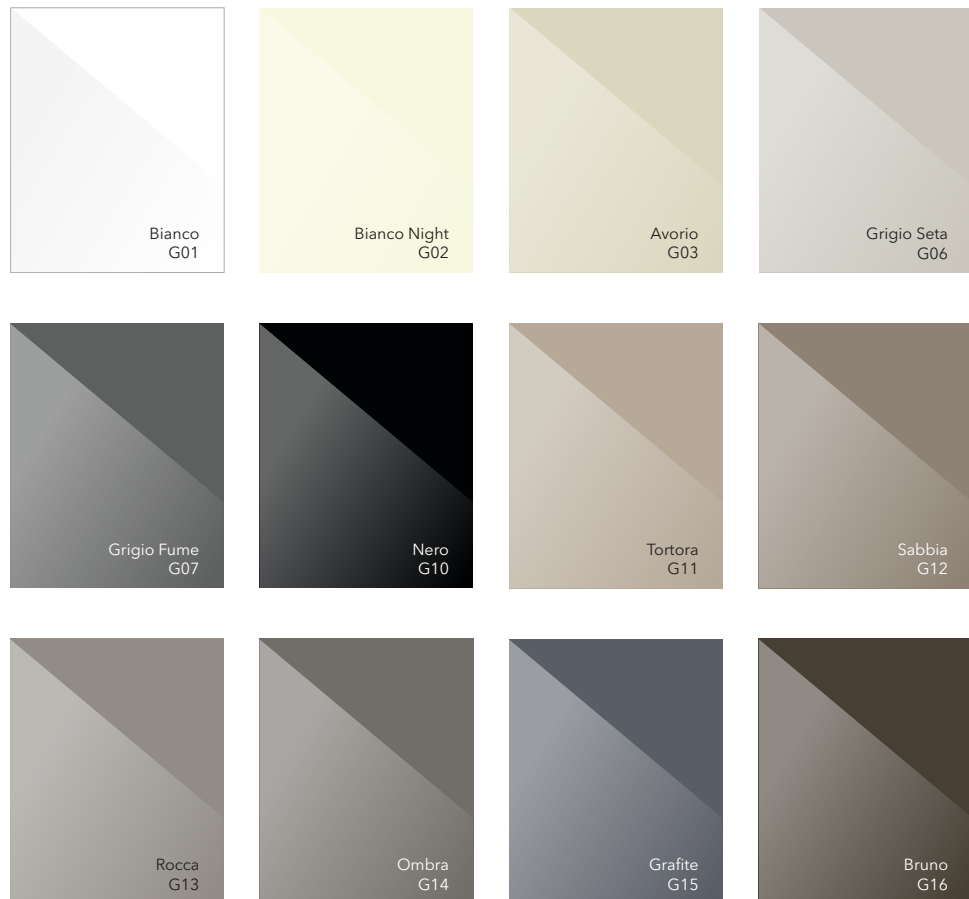
**HPL**   
Composite decorative material





**GLASS**

Glossy glass. Painting on specialized equipment in production conditions.

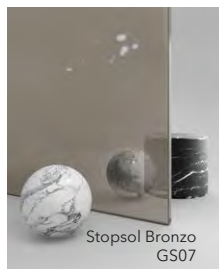
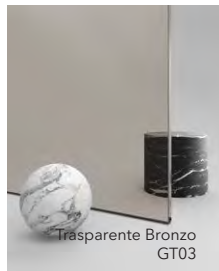


**GLASS MATT**

Frosted glass. Painting on specialized equipment in production conditions.



**TRANSPARENT GLASS**   
Translucent safety glass with decorative effects



**SATIN GLASS**   
Frosted safety glass





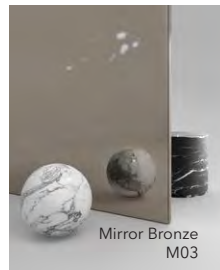
**MIRROR**   
Colored mirrors



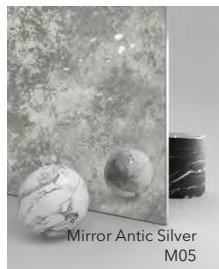
Mirror  
M01



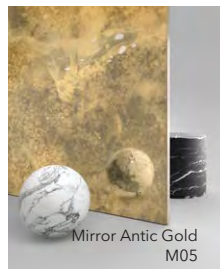
Mirror Grey  
M02



Mirror Bronze  
M03



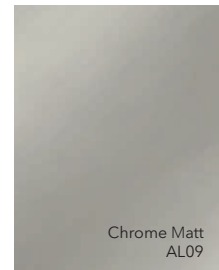
Mirror Antic Silver  
M05



Mirror Antic Gold  
M05

**ALUMINIUM** 

AL09 - high quality anodised electrochemical coating.  
AL02 - AL08. Polymer powder (made in Italy) coating in electrostatic field



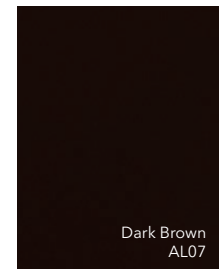
Chrome Matt  
AL09



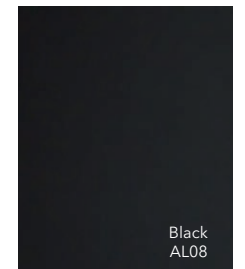
Soft Gold  
AL03



Soft Bronze  
AL04



Dark Brown  
AL07



Black  
AL08

**PORTOFINO TEXTILE**

Durable, abrasion-resistant fabrics

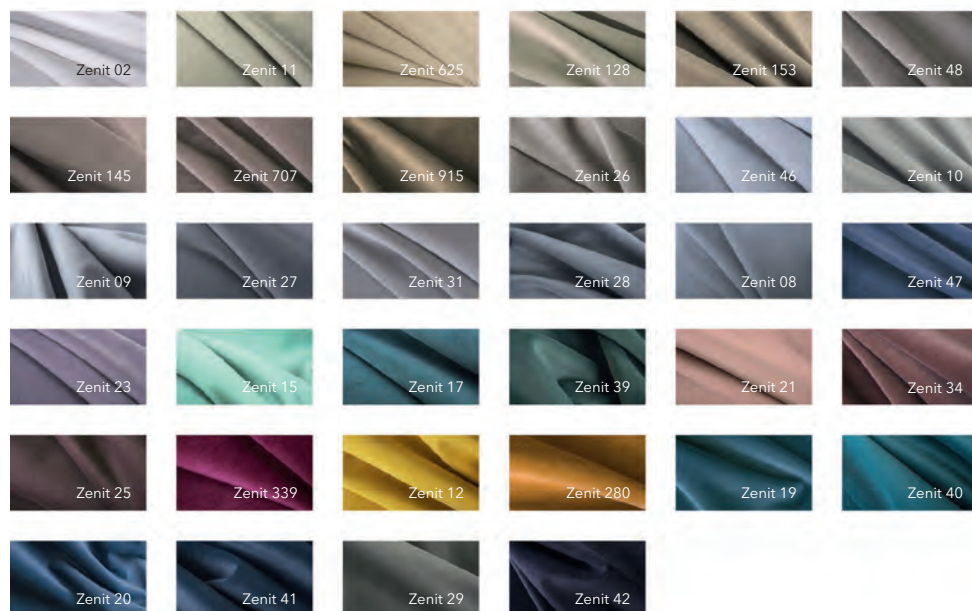
**PIANO**



**VERONA**






**ZENIT**



Via Flavio Baracchini, 2 - 20100 Milano (Italia)  
 +34 600 309731 | +7 915 1557851  
 info@unionporte.it  
 www.unionporte.it



UNION reserves the right to make changes that do not impair quality to the products presented in this catalog at any time without prior notice. The company is not responsible for incomplete similarity between the originals and the samples in the catalog. Colors and finishes shown in the sample catalog may differ from the original. For more detailed information or to get acquainted with real samples of color solutions / finishes, we recommend contacting the showrooms of the company.

- Instagram  uniondoors
- Pinterest  uniondoors
- Archiproducts  union

+34 600 309731  
info@unionporte.it  
www.unionporte.it