



Since 1990 up today UNION company is the market leader in the production of doors and furniture. UNION always strive for excellence, concentrating its efforts on finding new ideas, implementing European quality standards, enlarging the product range and introducing the latest trends in architecture and interior design.

Being an expert in interior doors and partitions development, in 2020 UNION launched to the market a new comprehensive approach to interior design.

The concept of “Doors and furniture in the same style” was developed by Italian architects on request and in collaboration with UNION. This solution makes easier implementation the ideas of architects working out an interior and guarantees the stylistic unity of all elements in the design project.

\ Modern doors

| | |
|------------|----|
| FILO-60 | 14 |
| UNIFLEX-3D | 26 |
| LAGO-60 | 30 |
| SLIM | 36 |
| TONDA | 40 |
| PIVOT | 42 |
| UNIX | 43 |

\ Traditional doors

| | |
|----------|----|
| TREND-60 | 44 |
| ALDA-60 | 46 |
| LEVEL-60 | 47 |
| CORDA-60 | 48 |
| GRAND-60 | 49 |
| PRIMA-60 | 50 |
| STELLA | 51 |

\ Sliding doors and partitions

| | |
|-------------|----|
| SLIDER | 52 |
| MAGIC | 53 |
| STRATUS | 54 |
| TRANSFORMER | 68 |
| WALLSTREET | 69 |

\ Wall panels

| | |
|-------|----|
| COVER | 70 |
|-------|----|

\ Metal entrance doors

| | |
|----------|----|
| DELTApro | 75 |
|----------|----|

\ Walk-in closets and storage systems

| | |
|---------|----|
| ALTO | 76 |
| FORMINA | 80 |

\ Shelving and bookcases

| | |
|-------|----|
| FORTE | 82 |
|-------|----|

\ Dining and coffee tables

| | |
|-------|----|
| MILAN | 86 |
| LOTUS | 88 |
| MOON | 89 |

\ Modular sofas

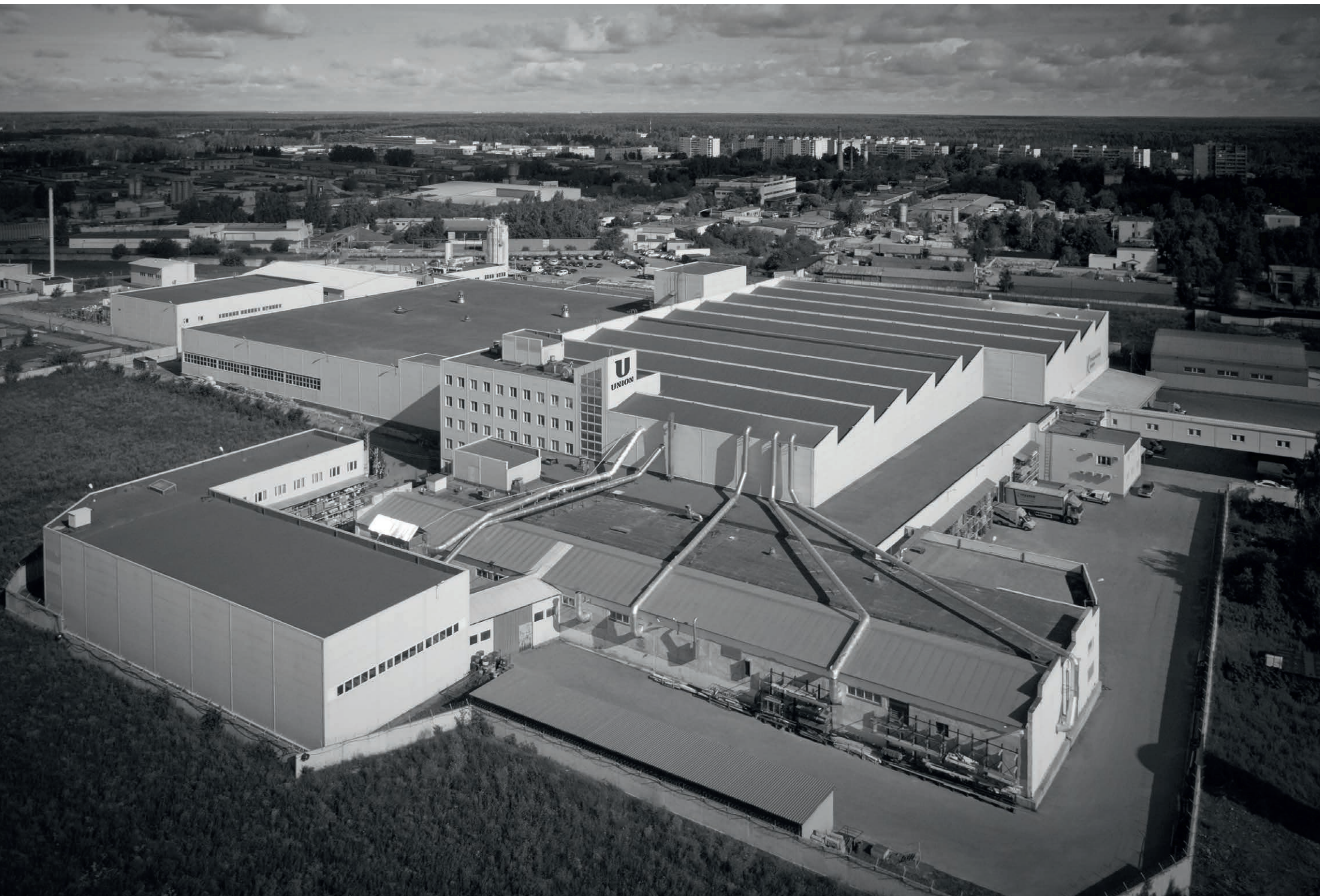
| | |
|-----------|----|
| PORTOFINO | 90 |
|-----------|----|

\ Skirting boards

| | |
|------------------|----|
| \ UNION CONTRACT | 94 |
|------------------|----|

| | |
|----------------------------|----|
| \ Fittings and accessories | 96 |
|----------------------------|----|

| | |
|--------------------------|----|
| \ Materials and finishes | 98 |
|--------------------------|----|



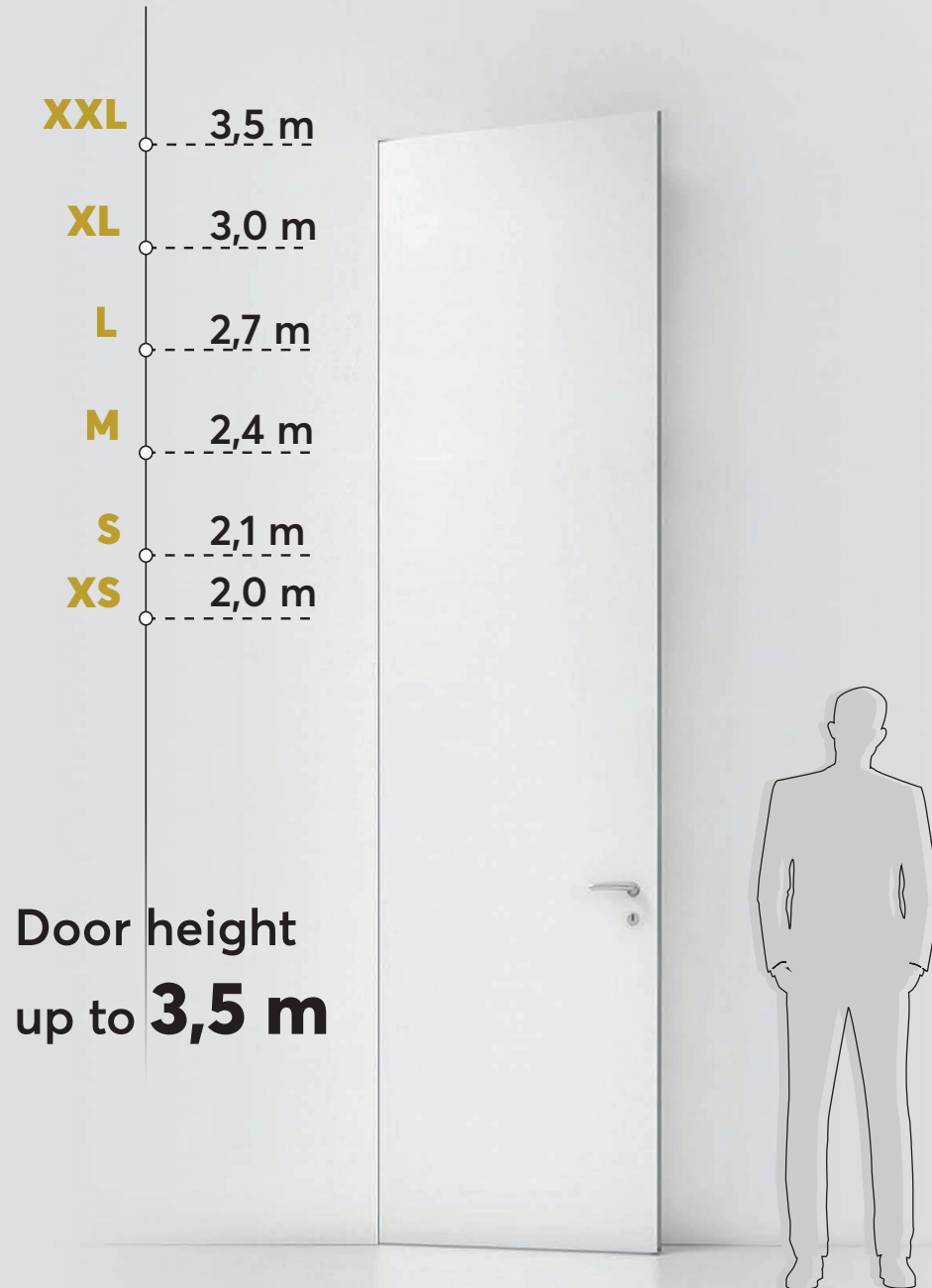


U **UNION** | 1990
DOORS · FURNITURE SINCE



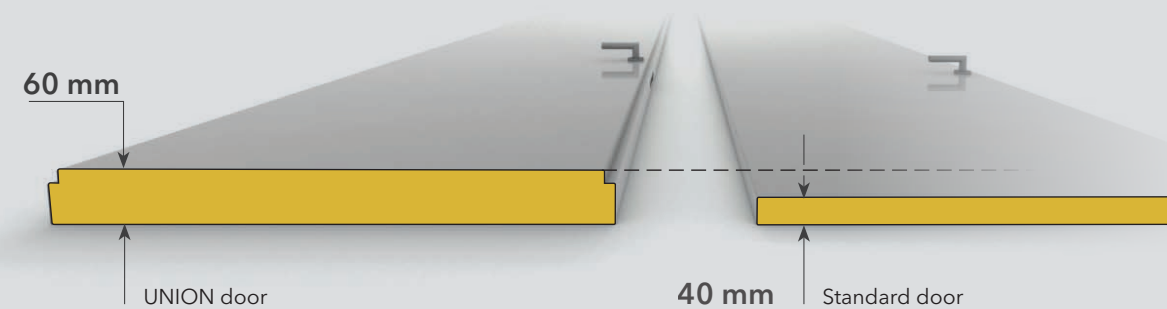
UNION company production was established according to the project of Italian architects based on the latest achievements of the Italian furniture industry. Our advanced production complex operates on more than 40,000 sqm and equipped with modern Italian and German hardware matching fulfillment of any complexity orders in the required volume. Majoring the implementation of complex interior solutions, the UNION company has reached the highest level of the development, thanks to the knowledge of the Italian door and furniture manufacturing traditions, the involve of European experience, technologies and equipment, as well as understanding the customers needs and constant improvement of products and services.

SIZE MATTERS



Thickness of UNION door
up to **60 mm**

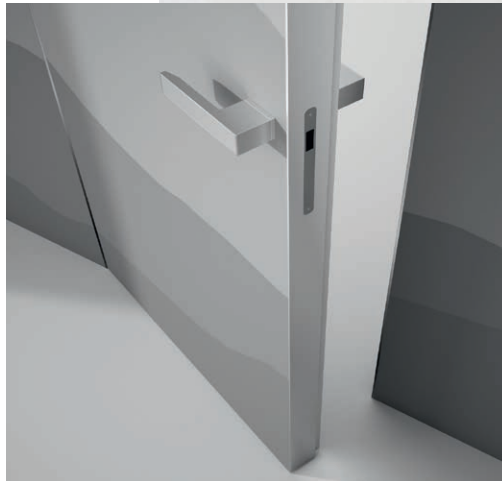
It's **50%** thicker
than an standard door





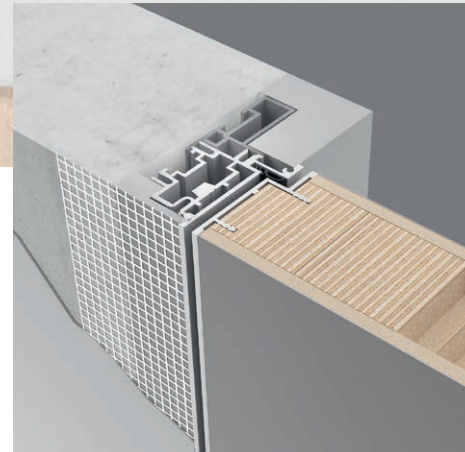
01
**Always in stock.
 Invisible doors ready
 to for paiting**

Always in stock, ready for quick shipment, unique FILO-60, Fondo doors with 60mm thickness in standard sizes 60/70/80 x 200/210/240 cm.



02
**Important advantage -
 door leaf thickness**

As a rule, the door leaf thickness of other manufacturers does not exceed 40 mm. The leaf thickness of UNION doors is 60 mm. Such doors have better sound insulation and durability. Besides all, they look prestigious and give the solidity to the interior.



03
Hidden frame with false frame

Hidden INVISIBLE frame is totally made from aluminum and it is reinforced by false frame - the additional secondary profile. That's the main difference between the constructions of UNION hidden frames from any standard hidden frames in a market. The rigid reliable construction is designed for long and intensive operation, including for heavy doors. Initially the frame is anodized in silver aluminum, but it can be also painted in a wall color or in any color according to the factory catalogue.

04

Height up to 3.5 meters

Modern trend, relevant for interiors made in different design. They lift up the ceilings, visually enlarge the room space. Reinforced frame and door leaf structure provides the strength and stability during a long-term operation.



05

Complanarity

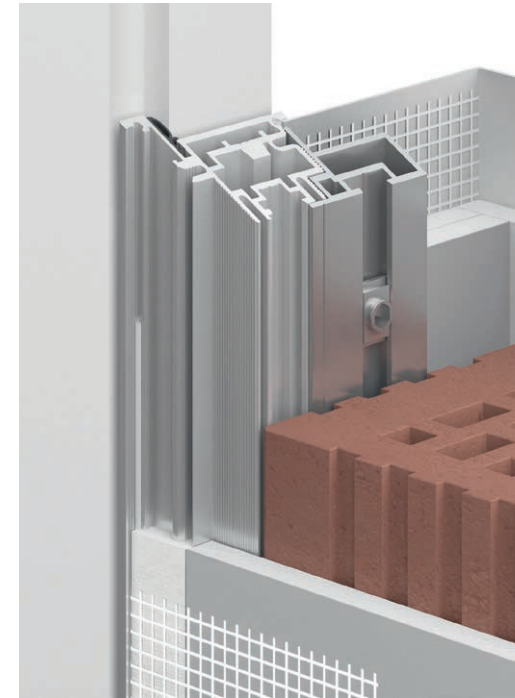
INVISIBLE hidden frame is integrated in a wall and creates one plane at "pull opening" and "push opening" door. Moreover, it's convenient to add the wall panels from different materials (from wood to glass) to this frame. In any case the complanarity has place - the solidity of surface with wall without protuberances.





06 Wall thickness

There are thin walls made from special materials in construction of some buildings. INVISIBLE frame is ideal for wall mounting from 6 cm thickness. The frame is installed in a thin wall without using a false frame and fixed via frame profile.



09 Support

There are longitudinal grooves in the profile of the false frame. The tool carriages are installed in these grooves. It is a special fixing device that allows adjusting quickly the frame position by level and then fastening securely the whole construction. It accelerates and simplifies the installation process. Minimum 4 tool carriages are installed in each vertical wall stand of INVISIBLE frame (there are always two of them).

07

Delivery of the assembled frame

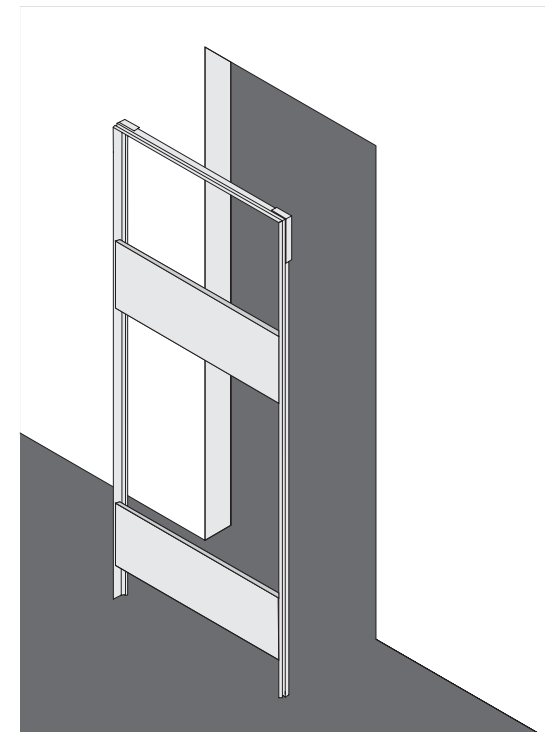
The INVISIBLE hidden frame can be delivered fully assembled. It means that the frame is assembled with fixed mounting bars ready to be installed in the doorway. The installers can only set it vertically and fix it to the slopes opening. Thus the installation becomes faster and easier.



10

Suitable for standard doorways

According to international standards, the door's width 60, 70, 80 and 90 cm are standard. As a rule, many builders prepare the doorways exactly in accordance with those standards. UNION hidden frame doors are designed the way that their geometric dimensions fit into standard doorways that significantly reduce their cost.



08 Aesthetic mounting

The INVISIBLE frame design allows you to create a joint with the tiles, the porcelain tiles or other materials directly tightly, without additional transitional elements and visible gaps. Such a technical solution is specifically provided for doors on hidden frame of both internal and external opening.





11

Humidity resistance

Aluminum INVISIBLE frame makes a door humidity resistant, in contrast to the doors on wood or MDF frame. UNION doors are not exposed to humidity during the wet cleaning or at the wet floor. They can be used in high humidity rooms without fear of wet support structure - the frame.



13

Solidity of finishing

There is a very interesting and trendy option in UNION - the possibility of factory polymer painting in the same color of all metal elements of the door structures. The solidity of finishing of aluminum tip edge, frame and handles create a unique aesthetic integrity and laconism.

14

Rabbeted door

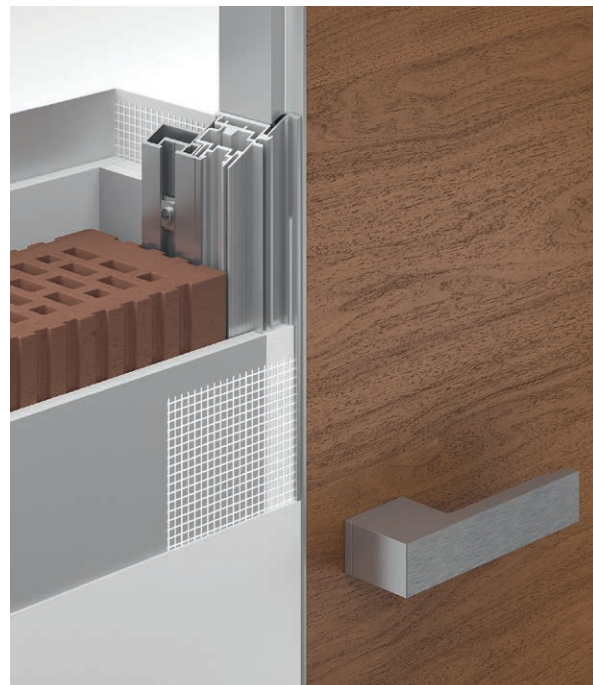
UNION produces the unique 60 mm doors with so-called rabbet ledge. Sometimes we use the terms "doors with groove" or "framed-and-ledged doors" instead of "rabbeted doors". Thanks to the ledge, the door leaf connects better to the frame that increases the sound and heat insulations. Due to the ledge the door becomes flush at different door handing - "pull opening" and "push opening". The ledge also prevents the light penetration in another room.



12

Fabricability

INVISIBLE hidden frame are supplied with a special supporting net along the whole aluminum frame perimeter. This is the important detail when a wall is plastered close to the frame and then painted. The net simplifies the plastering process and excludes the cracks of the wall surface.



15

Aluminum - Low footprint

Aluminum is a natural, eco-friendly and safe material that is not exposed to the environment. Such materials as wooden board, MDF have a number of fundamental defects - they trigger and swell on wetting. There are the doors with PVC elements in a market. This material is very harmful for humans.

FILO-60

INVISIBLE DOORS



Hidden door in classical interior



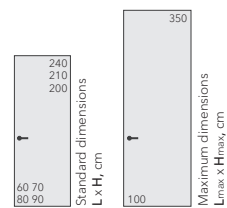
INVISIBLE frame



INVISIBLE Inverso frame



FILO-60, Piatto, L00 Fondo / INVISIBLE



- L

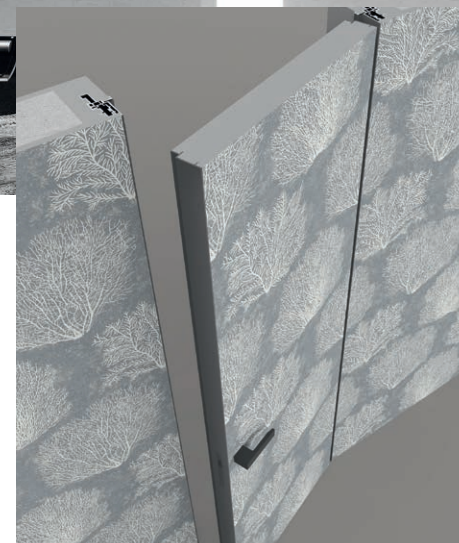
LACCATO MATT
Matt enamels
(L00 Fondo)
- LG

LACCATO GLOSS
Gloss enamels
- HP

HPL
Composite material
- V

VENEER NATURAL
Natural wood veneer
- AL

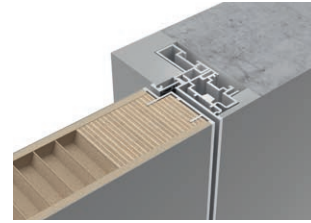
ALUMINIUM
Anodised and polymer coatings



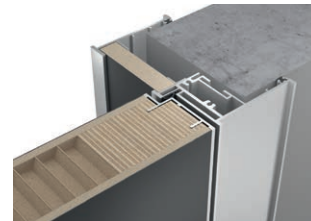
Wallpapering the door and the wall together

FILO-60

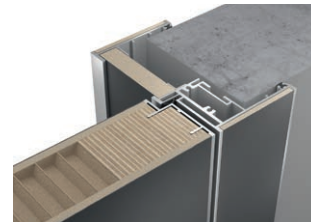
MATTE AND GLOSSY ENAMELS



INVISIBLE frame



PLANAR frame

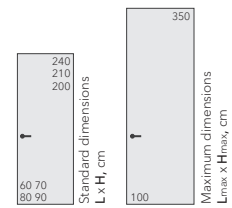


PLANAR frame with insert



UNIDOOR frame

FILO-60, Piatto, L10 Nero / INVISIBLE



FILO-60, Piatto, LG11 Tortora Gloss / INVISIBLE

- L

LACCATO MATT
 Matt enamels
- LG

LACCATO GLOSS
 Gloss enamels
- HP

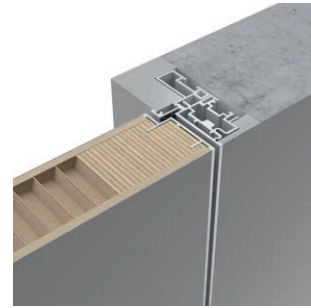
HPL
 Composite material
- V

VENEER NATURAL
 Natural wood veneer
- AL

ALUMINIUM
 Anodised and polymer coatings

FILO-60

COMPOSITE DECORATIVE MATERIAL



INVISIBLE frame

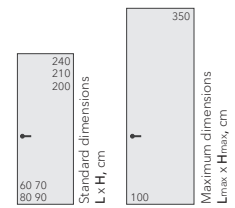







PLANAR frame



PLANAR frame with insert

FILO-60, Piatto, L10 Nero / INVISIBLE

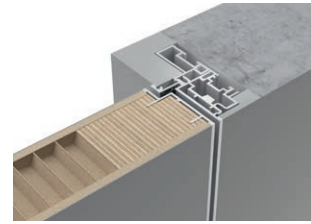


- 
L
 LACCATO MATT
 Matt enamels
- 
LG
 LACCATO GLOSS
 Gloss enamels
- 
HP
 HPL
 Composite material
- 
V
 VENEER NATURAL
 Natural wood veneer
- 
AL
 ALUMINIUM
 Anodised and polymer coatings

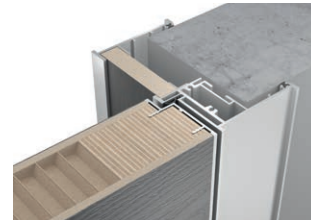
FILO-60, Piatto, HP04 Marmo Bianco / INVISIBLE

FILO-60

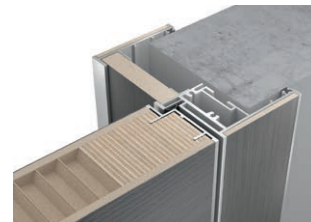
NATURAL WOOD VENEER



INVISIBLE frame



PLANAR frame

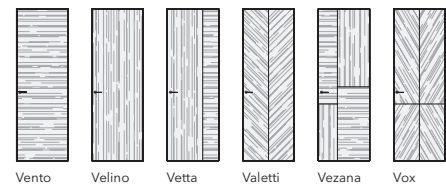


PLANAR frame with insert

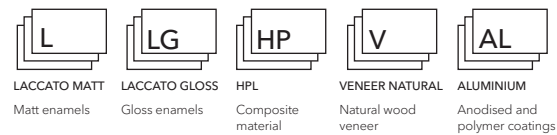
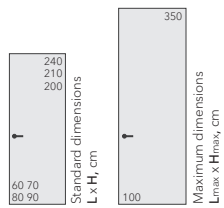


UNIDOOR frame

FILO-60, Vento, V10 Rovere Antico / INVISIBLE



Vento Velino Vetta Valetti Vezana Vox



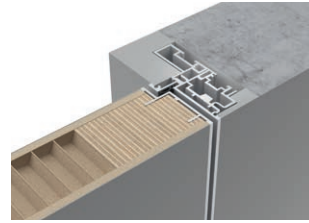
FILO-60, Alu, Vox, V20 Noce Americano / INVISIBLE

FILO-60

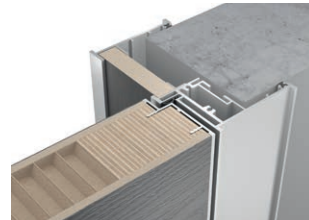
NATURAL WOOD VENEER



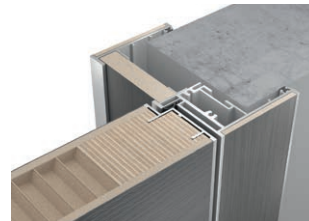
FILO-60, Vetta, V11 Rovere Tetro / INVISIBLE



INVISIBLE frame



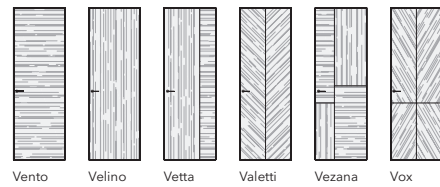
PLANAR frame



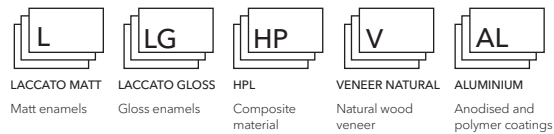
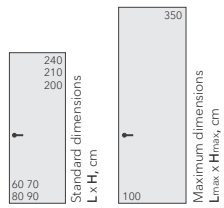
PLANAR frame with insert



UNIDOOR frame



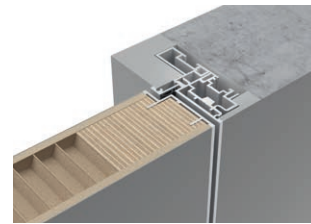
Vento Velino Vetta Valetti Vezana Vox



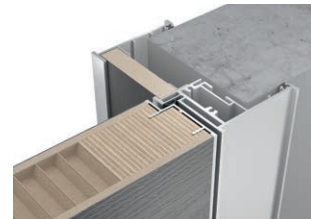
FILO-60, Alu, Valetti, V03 Ebano / INVISIBLE

FILO-60

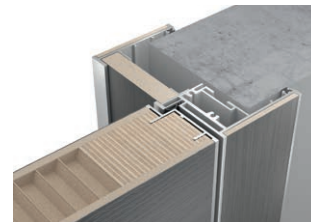
НАТУРАЛЬНЫЙ ШПОН



INVISIBLE frame



PLANAR frame

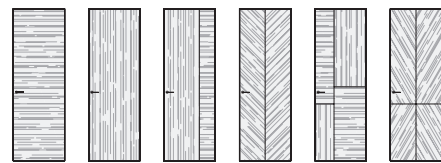


PLANAR frame with insert

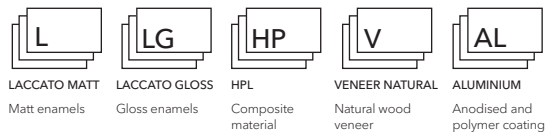
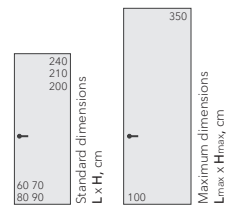


UNIDOOR frame

FILO-60, Vento, V16 Noce Canaletto / PLANAR



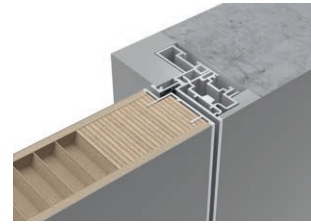
Vento Velino Vetta Valetti Vezana Vox



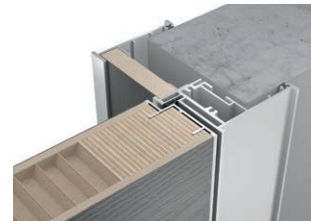
FILO-60, Vento, V13 Rovere Cenere / PLANAR

UNIFLEX-3D

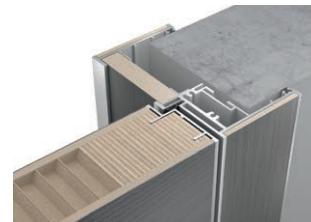
3D MILLING AND RELIEF PATTERN (SOLID, VENEER)



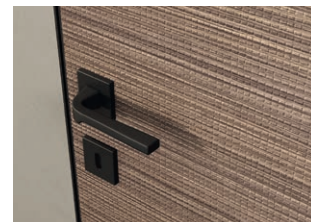
INVISIBLE frame



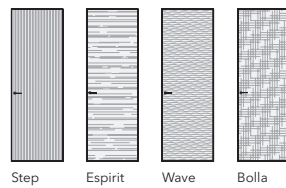
PLANAR frame



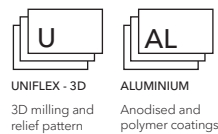
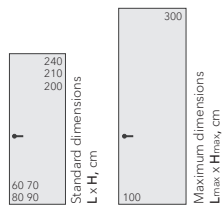
PLANAR frame with insert



UNIFLEX-3D, Alu, Bolla, UB16 Noce Canaletto / INVISIBLE



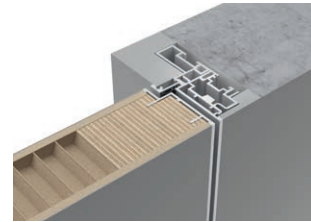
Step Espirit Wave Bolla



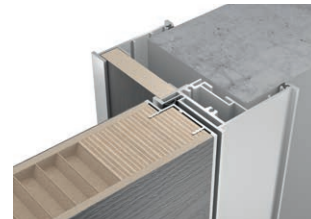
UNIFLEX-3D, Alu, Step, US16 Noce Canaletto / PLANAR

UNIFLEX-3D

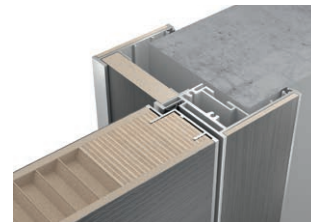
3D MILLING AND RELIEF PATTERN (SOLID, VENEER)



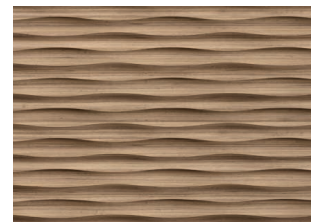
INVISIBLE frame



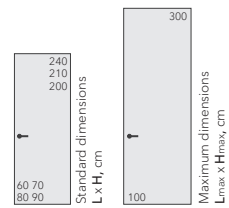
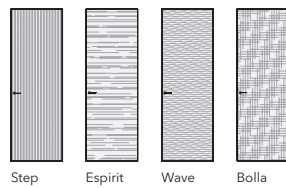
PLANAR frame



PLANAR frame with insert



UNIFLEX-3D, Alu, Wave, UW16 Noce Canaletto / INVISIBLE



U
UNIFLEX - 3D
3D milling and relief pattern

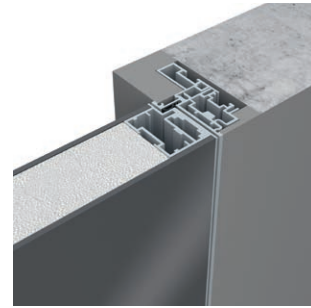
AL
ALUMINIUM
Anodised and polymer coatings



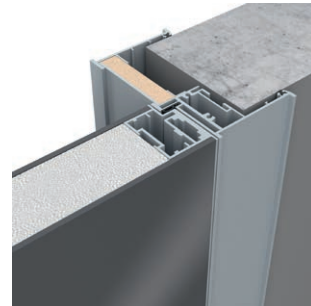
UNIFLEX-3D, Alu, Espirit, US16 Noce Canaletto / INVISIBLE

LAGO-60

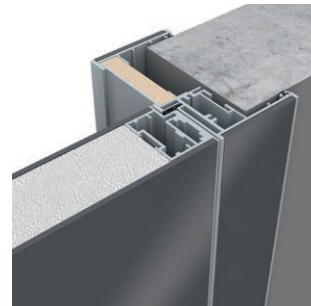
DOUBLE GLASS IN AN REFINED FRAME



INVISIBLE frame



PLANAR frame

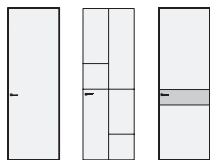


PLANAR frame with insert

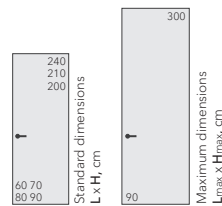
LAGO-60, Piatto, G01 Bianco / INVISIBLE



LAGO-60, Piatto, G10 Nero / INVISIBLE



Piatto Modelica Plain



- L

LACCATO MATT
 Matt enamels
- G

GLASS
 Painted glass
- GM

GLASS MATT
 Frosted painted glass
- M

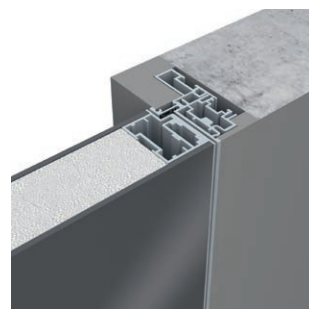
MIRROR
- GT

TRANSPARENT & SATIN GLASS
- AL

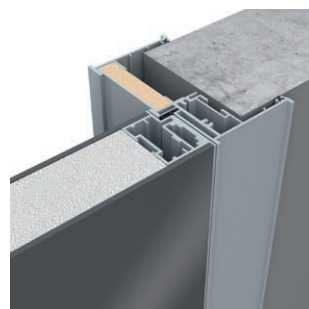
ALUMINIUM
 Anodised and polymer coatings

LAGO-60

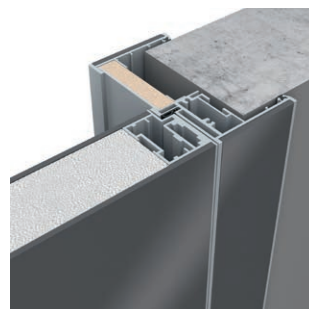
DOUBLE GLASS IN AN REFINED FRAME



INVISIBLE frame

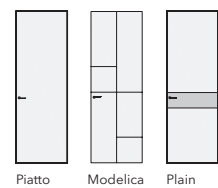


PLANAR frame

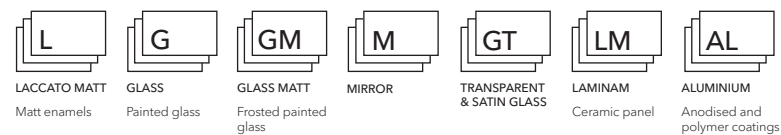
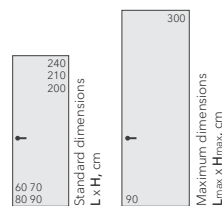


PLANAR frame with insert

LAGO-60, Plain, G10 Nero, вставка LM11 Fokos Piombo / INVISIBLE



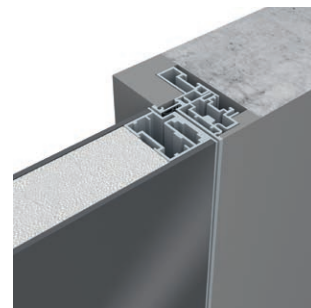
Piatto Modelica Plain



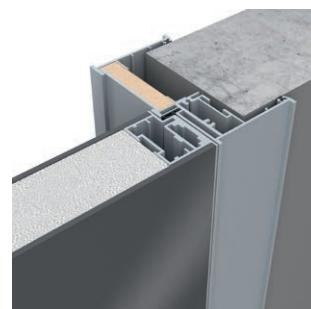
LAGO-60, Modelica, G06 Grigio Seta / INVISIBLE

LAGO-60

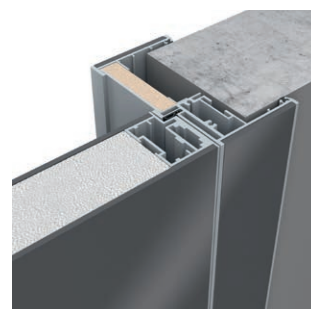
DOUBLE GLASS IN AN REFINED FRAME



INVISIBLE frame

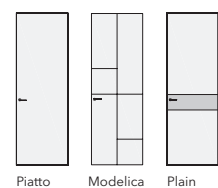


PLANAR frame

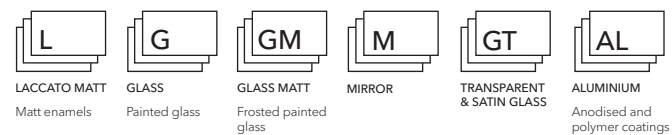
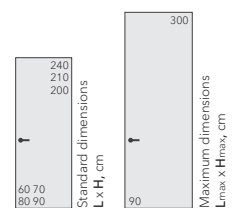


PLANAR frame with insert

LAGO-60, Piatto, G13 Rocca / PLANAR



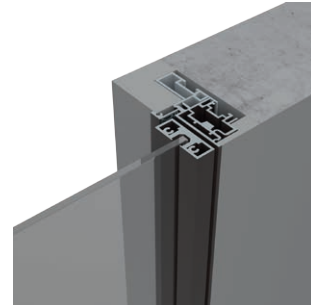
Piatto Modelica Plain



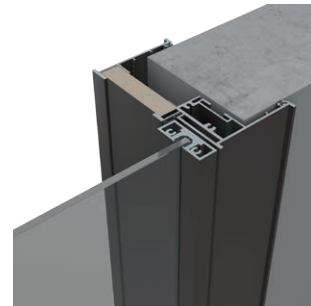
LAGO-60, Modelica, GT02 Trasparente Grafite / PLANAR

SLIM

DECORATIVE GLASS IN ALUMINIUM STRUCTURES

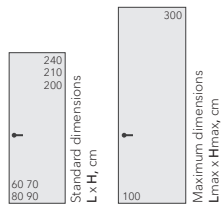
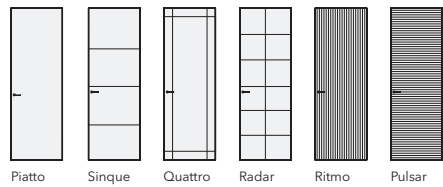


INVISIBLE frame



PLANAR frame

SLIM, Piatto, GT05 Trasparente Sole / INVISIBLE

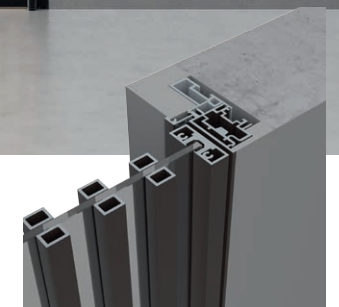


GT
TRANSPARENT
& SATIN GLASS

AL
ALUMINIUM
Anodised and
polymer coatings

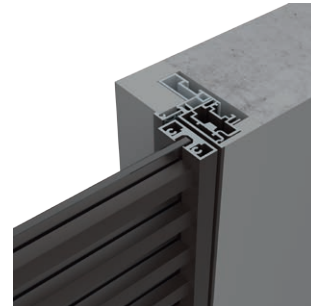


SLIM, Ritmo, GT03 Trasparente Bronze / INVISIBLE

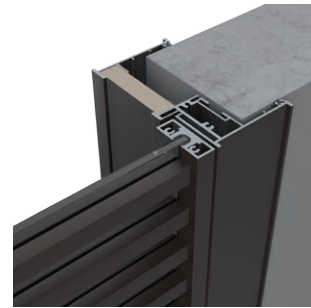


SLIM

DECORATIVE GLASS IN ALUMINIUM STRUCTURES

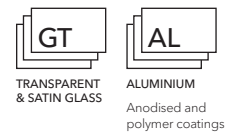
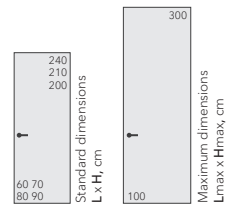
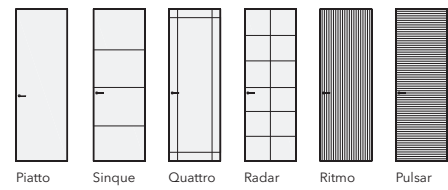


INVISIBLE frame

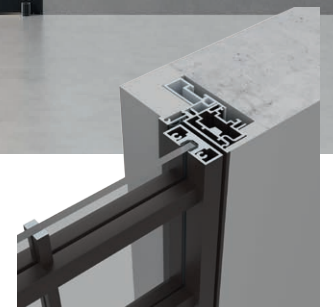


PLANAR frame

SLIM, Pulsar, GT03 Trasparente Bronze / INVISIBLE



SLIM, Radar, GT02 Trasparente Grafite / INVISIBLE



TONDA

PREMIUM DOORS WITH ROUNDED EDGES



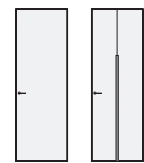
TONDA, Ego, LG01 Bianco Gloss



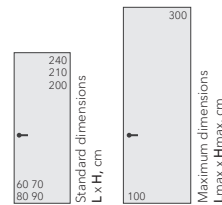
TONDA frame without adjustment







TONDA frame with adjustment



Piatto Ego



- 
L
 LACCATO MATT
 Matt enamels
- 
LG
 LACCATO GLOSS
 Gloss enamels
- 
V
 VENER NATURAL
 Natural wood veneer
- 
AL
 ALUMINIUM
 Anodised and polymer coatings



TONDA, Piatto, V20 Noce Americano

PIVOT

PIVOTING DOORS



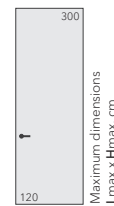
PIVOT-60, L00 Fondo / INVISIBLE



PIVOT-45, without frame



PIVOT-60, INVISIBLE frame



- L

LACCATO MATT
 Matt enamels
- HP

HPL
 Composite material
- V

VENEER NATURAL
 Natural wood veneer
- LG

LACCATO GLOSS
 Gloss enamels
- U

UNIFLEX - 3D
 3D milling and relief pattern
- AL

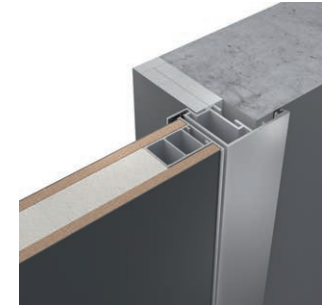
ALUMINIUM
 Anodised and polymer coatings

UNIX

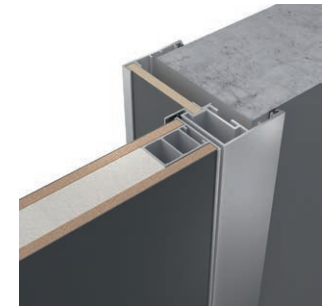
AFFORDABLE QUALITY



UNIX, Piatto, DC01 Neve / U-SYSTEM



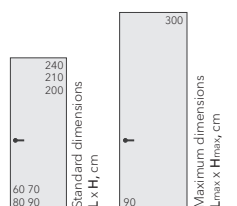
U-SYSTEM frame without adjustment panel



U-SYSTEM frame with adjustment panel



U-SYSTEM frame
Installation in an finished opening



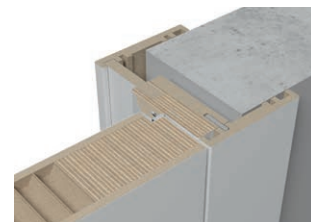
- DC

DECORIT
 Decorative material
- AL

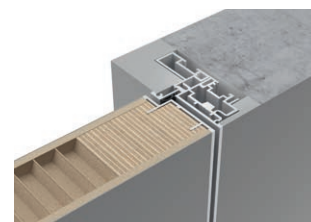
ALUMINIUM
 Anodised and polymer coatings

TREND-60

TRADITIONAL DOORS



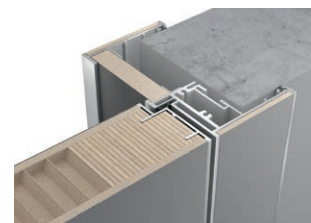
UNIDOOR frame



INVISIBLE frame



PLANAR frame

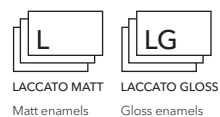
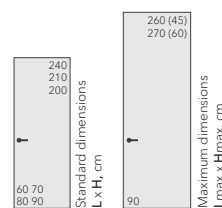
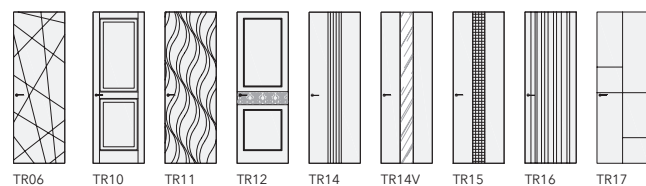


PLANAR frame with insert

TREND-60, TR15, L13 Rocca / UNIDOOR

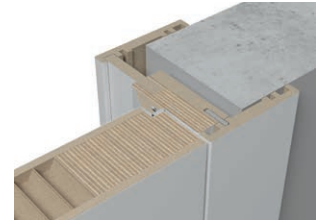


TREND-60, TR16, L01 Bianco / INVISIBLE

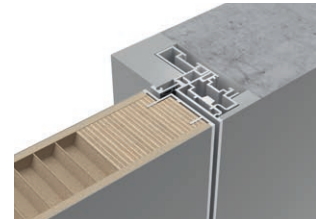


ALDA-60

NEOCLASSICAL STYLE DOORS



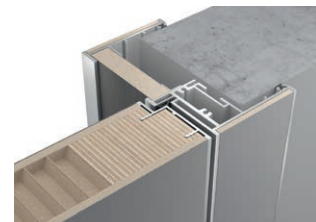
UNIDOOR frame



INVISIBLE frame

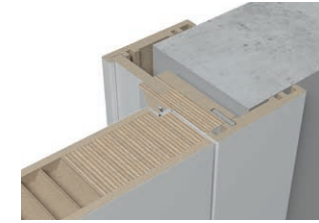
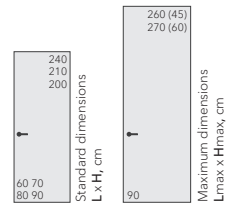
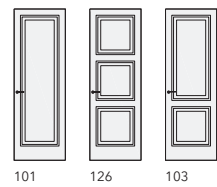


PLANAR frame

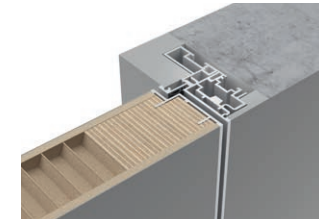


PLANAR frame with insert

ALDA-60, 101, L01 Bianco / UNIDOOR



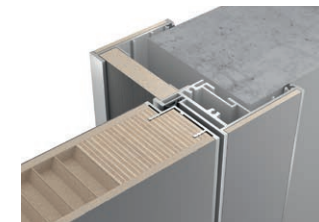
UNIDOOR frame



INVISIBLE frame

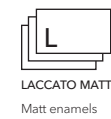
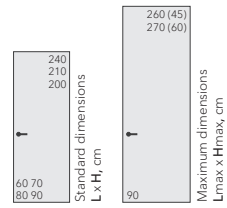
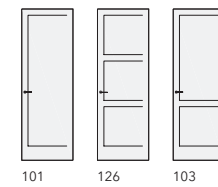


PLANAR frame



PLANAR frame with insert

LEVEL-60, 101, L01 Bianco / UNIDOOR



CORDA-60

CLASSIC STYLE DOORS



UNIDOOR frame



INVISIBLE frame

CORDA-60, 127P, L01 Bianco / UNIDOOR

GRAND-60

CLASSIC STYLE DOORS

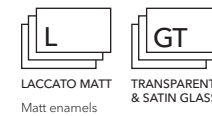
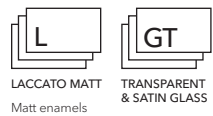
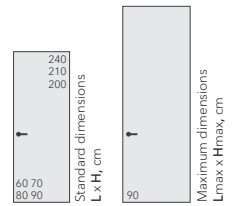
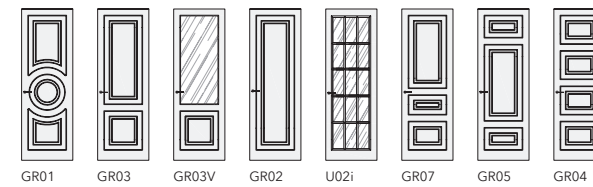
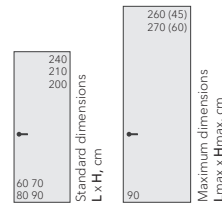
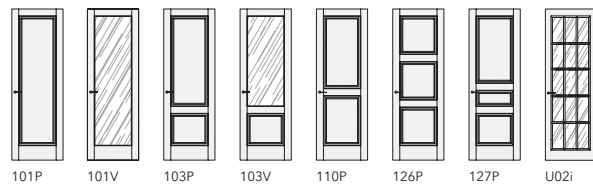


UNIDOOR frame



INVISIBLE frame

GRAND-60, GR01, L01 Bianco / UNIDOOR



PRIMA-60

CLASSIC STYLE DOORS



UNIDOOR frame



INVISIBLE frame

PRIMA-60, P, L01 Bianco / UNIDOOR

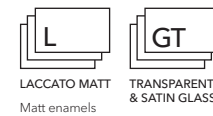
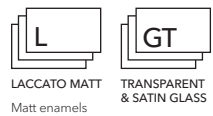
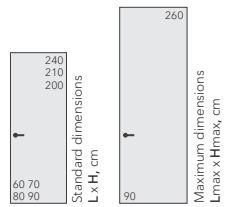
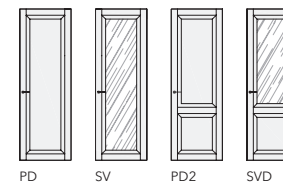
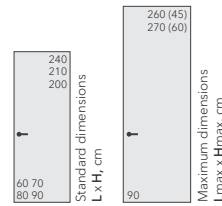
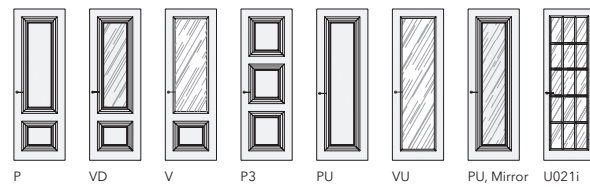
STELLA

CLASSIC STYLE DOORS



UNIDOOR frame

STELLA, PD, L01 Bianco / UNIDOOR



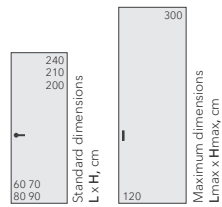
SLIDER

SLIDING POCKET DOORS AND PARTITIONS



1. SLIDER-FILO, L00 Fondo

2. MINI, L00 Fondo



- L**
LACCATO MATT
Matt enamels
- HP**
HPL
Composite material
- V**
VENEER NATURAL
Natural wood veneer
- LG**
LACCATO GLOSS
Gloss enamels
- U**
UNIFLEX - 3D
3D milling and relief pattern
- G**
GLASS
Painted glass
- GM**
GLASS MATT
Frosted painted glass
- M**
MIRROR
- GT**
TRANSPARENT & SATIN GLASS
- AL**
ALUMINIUM
Anodised and polymer coatings

MAGIC

INVISIBLE SLIDING DOOR SYSTEM



MAGIC-FILO, Alu, Vento V17 Rovere Chiaro



- L**
LACCATO MATT
Matt enamels
- HP**
HPL
Composite material
- V**
VENEER NATURAL
Natural wood veneer
- LG**
LACCATO GLOSS
Gloss enamels
- U**
UNIFLEX - 3D
3D milling and relief pattern
- G**
GLASS
Painted glass
- GM**
GLASS MATT
Frosted painted glass
- M**
MIRROR
- GT**
TRANSPARENT & SATIN GLASS
- AL**
ALUMINIUM
Anodised and polymer coatings

STRATUS

SLIDING DOORS AND PARTITIONS



STRATUS-LAGO, Piatto, G13 Rocca



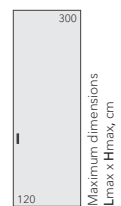
ceiling track



build-in track



wall track



- | | | | | | | | | | |
|------------------------------|---------------------------|---------------------------------------|--------------------------------|---|------------------------|-------------------------------------|----------|---------------------------|--|
| L | HP | V | LG | U | G | GM | M | GT | AL |
| LACCATO MATT Matt enamels | HPL Composite material | VENEER NATURAL Natural wood veneer | LACCATO GLOSS Gloss enamels | UNIFLEX - 3D 3D milling and relief pattern | GLASS Painted glass | GLASS MATT Frosted painted glass | MIRROR | TRANSPARENT & SATIN GLASS | ALUMINIUM Anodised and polymer coatings |



STRATUS-FILO, Alu, Vento, V22 Mogano

STRATUS

SLIDING DOORS AND PARTITIONS



300
120

Maximum dimensions
Lmax x Hmax, cm

GT
TRANSPARENT
& SATIN GLASS

AL
ALUMINIUM
Anodised and
polymer coatings

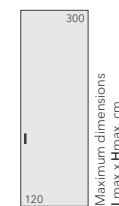
STRATUS-SLIM, Piatto, GT02 Trasparente Grafite

STRATUS

SLIDING DOORS AND PARTITIONS

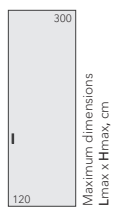


STRATUS-SLIM, Piatto, GT05 Trasparente Sole



GT
TRANSPARENT
& SATIN GLASS

AL
ALUMINIUM
Anodised and
polymer coatings



Maximum dimensions
Lmax x Hmax, cm

GT
TRANSPARENT
& SATIN GLASS

AL
ALUMINIUM
Anodised and
polymer coatings

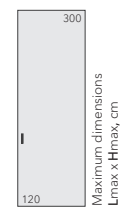
STRATUS-SLIM, Pulsar, GT02, Trasparente Grafite

STRATUS

SLIDING DOORS AND PARTITIONS



STRATUS-SLIM, Ritmo, GT02 Trasparente Grafite



TRANSPARENT
& SATIN GLASS



ALUMINIUM
Anodised and
polymer coatings



300
120

Maximum dimensions
Lmax x Hmax, cm

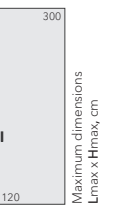
GT
TRANSPARENT
& SATIN GLASS

AL
ALUMINIUM
Anodised and
polymer coatings

1. STRATUS-SLIM, Quadro, GT02 Trasparente Grafite
2. PORTOFINO, Zenit_26
3. MOON, AL03 Soft Gold
4. FORTE Base, DC02 Frassino Grigio, AL03 Soft Gold
5. COVER, V20 Noce Americano



STRATUS-SLIM, Radar, GT02 Trasparente Grafite



GT
TRANSPARENT
& SATIN GLASS

AL
ALUMINIUM
Anodised and
polymer coatings

TRANSFORMER

FOLDING SLIDING PARTITION WALLS



TRANSFORMER, Vario, Velino, V16 Noce Canaletto



- L

LACCATO MATT
Matt enamels
- HP

HPL
Composite material
- V

VENEER NATURAL
Natural wood veneer
- LG

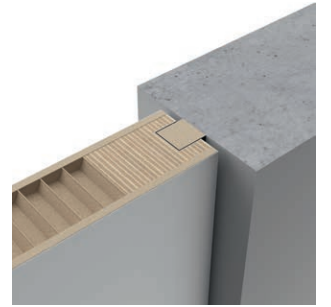
LACCATO GLOSS
Gloss enamels

WALLSTREET

PERMANENT PARTITIONS



WALLSTREET, FILO-60, Alu, Velino V28 Noce Nazionale



wall connection



- L

LACCATO MATT
Matt enamels
- HP

HPL
Composite material
- V

VENEER NATURAL
Natural wood veneer
- LG

LACCATO GLOSS
Gloss enamels
- U

UNIFLEX - 3D
3D milling and relief pattern
- AL

ALUMINIUM
Anodised and polymer coatings

COVER

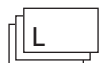
WALL PANELS




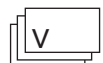
COVER, LG14 Ombra Gloss




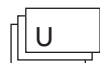
COVER, Velino, V01 Noce Europeo

- 

L
LACCATO MATT
Matt enamels
- 

HP
HPL
Composite material
- 

V
VENEER NATURAL
Natural wood veneer
- 

LG
LACCATO GLOSS
Gloss enamels
- 

U
UNIFLEX - 3D
3D milling and relief pattern



3

1

2

- 1. COVER, Step, US01 Noce Canaletto
- 2. UNIFLEX-3D, Alu, Step, US01 Noce Canaletto
- 3. STRATUS, Alu, Step, US01 Noce Canaletto



COVER, Piatto, HP05 Marmo Grigio



DELTApro with decorative panel
HP05 Marmo Grigio



DECORIT
Decorative
material



ALUMINIUM
Anodised and
polymer coatings

ALTO, DC03 Noce Tradizionale / AL08 Black



DECORIT
Decorative
material



ALUMINIUM
Anodised and
polymer coatings

1. ALTO, DC03 Noce Tradizionale / AL08 Black
2. STRATUS – SLIM, Sinque, GT02 Trasparente Grafite



- DC

DECORIT
Decorative material
- G

GLASS
Painted glass
- GM

GLASS MATT
Frosted painted glass
- M

MIRROR
- GT

TRANSPARENT & SATIN GLASS
- AL

ALUMINIUM
Anodised and polymer coatings

FORMINA, DC03 Noce Tradizionale / AL08 Black

FORTE

BOOKCASES



1. FORTE, DC03 Noce Tradizionale / AL08 Black
2. MOON, AL08 Black

DC
DECORIT
Decorative
material

AL
ALUMINIUM
Anodised and
polymer coatings



DECORIT
Decorative
material



ALUMINIUM
Anodised and
polymer coatings

FORTE Base, DC04 Rovere Termo / AL08 Black

MILAN
DINING TABLES



MILAN, Vox, V15 Rovere Tobacco / AL07 Dark Brown



MILAN, GT01 Trasparente / Chrome

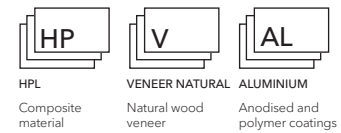
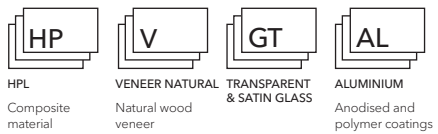
| | | | |
|------------------------------|--|------------------------------|---|
| HP | V | GT | AL |
| HPL Composite material | VENEER NATURAL Natural wood veneer | TRANSPARENT & SATIN GLASS | ALUMINIUM Anodised and polymer coatings |



LOTUS, GT02 Trasparente Grafite / Chrome



MOON, V16 Noce Canaletto / AL08 Black



PORTOFINO

MODULAR SOFAS



PORTOFINO, D.PR6L, Piano 4



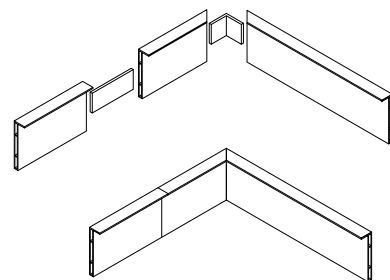
PORTOFINO, PR.D3, Piano 5

* The color palette of fabrics on pg. 110

SKIRTING BOARDS

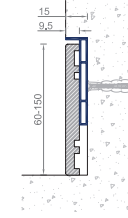


Concealed plinth **MINI**, insert L01 Bianco



Connectors
for plinth **MINI**

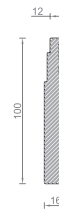
MINI with insert



NP9



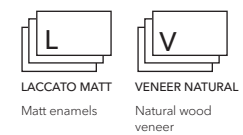
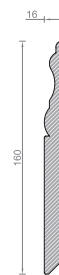
NA10



GIOTTO



PRIMA



UNION CONTRACT

PRODUCTION AND SUPPLY OF DOORS AND FURNITURE TO VARIOUS BIG PROJECTS

UNION CONTRACT is a division that deals with the contract supply of various doors, wall panels and furniture for hospitality, offices, medical and other institutions. Thanks to many years of experience and possessing a large-scale production with modern Italian equipment, the company is able to carry out any projects in set terms under efficient proposal and at reasonable prices.

WE OFFER manufacture and supply of:

- Interior doors and partitions of any design up to 3.5 m high
- Entrance and technical doors
- Fire rated doors
- Basic and non-standard cabinet furniture
- Interior decoration with wall panels
- Upholstered furniture





BIG LINE, "made in EU"
Finishes - Aluminium (pg. 109)



ROBOQUATTRO S, COLOMBO "made in ITALY"
Chrome Matt, Black, Chrome, White, Gold



Handle only



Handle with key PAT



Handle with WC lock



Handle with YALE lock



MELODY, "made in EU"
Finishes - Aluminium (pg. 109)



GIRA, COLOMBO "made in ITALY"
Chrome Matt



Latch CD 49, COLOMBO "made in ITALY"
Chrome matt



Latch PT 19 BZG, COLOMBO, "made in ITALY"
Chrome Matt, Black, Chrome, White, Gold



SQUARE, "made in EU"
Finishes - Aluminium (pg. 109)



PUNTO minimal, "made in ITALY"
Finishes - Aluminium (pg. 109)



Latch PUNTO WC, "made in ITALY"
Finishes - Aluminium (pg. 109)



Latch 3045 RE, "made in EU"
Finishes - Aluminium (pg. 109)



CINTO, "made in EU"
Finishes - Aluminium (pg. 109)



NAXOS, FORME "made in ITALY"
Chrome Matt, Black, Chrome, White



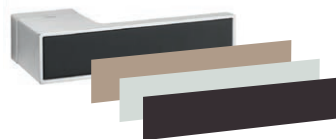
POLARIS, AGB "made in ITALY"
Magnetic silent lock
Chrome mat, Gold, Black, White



HOOK, AGB "made in ITALY"
Lock for sliding door
Chrome mat, Gold, Black, White



BIG LINE with insert, "made in EU"
Finishes - Aluminium (pg. 109)



BIG LINE handle insert finishes
are shown pp. 98-108

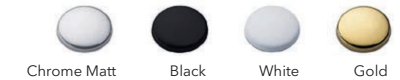
COLOMBO finishes



FORME finishes

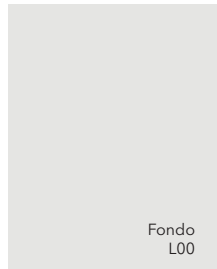


AGB finishes

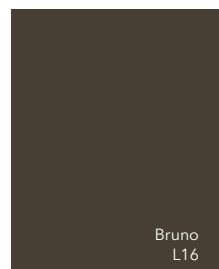
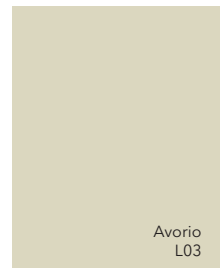
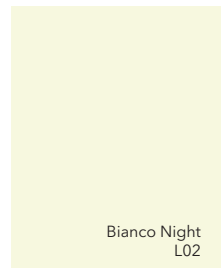


LACCATO MATT 

Painted with matt enamels in production environment on specialized equipment "made in ITALY".

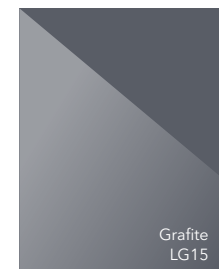
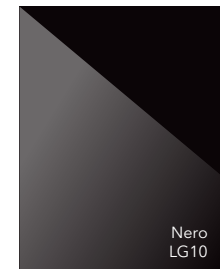
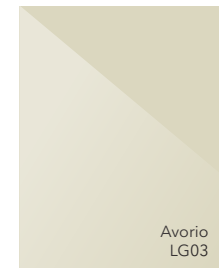
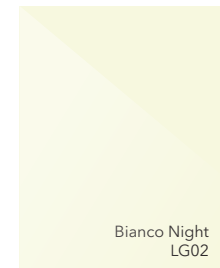
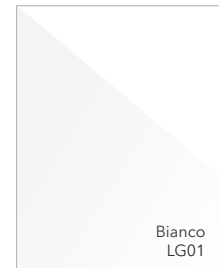


The finishing Fondo is a primer for subsequent painting in any colour with any effects



LACCATO GLOSS 

High quality 90 Gloss finish, achieved by applying 8 layers of lacquer and intermediate sanding on specialized equipment "made in ITALY".



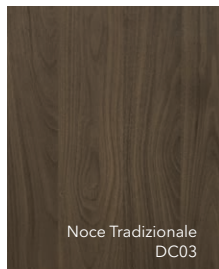
DECORIT 
Abrasion-resistant decorative material



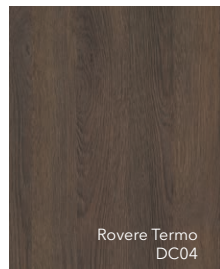
Neve
DC01



Frassino Grigio
DC02

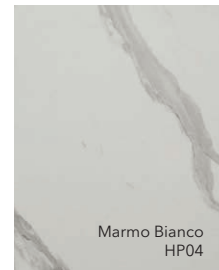


Noce Tradizionale
DC03

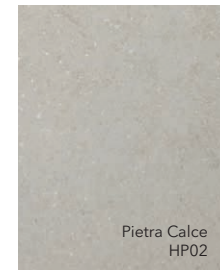


Rovere Termo
DC04

HPL 
Composite decorative material



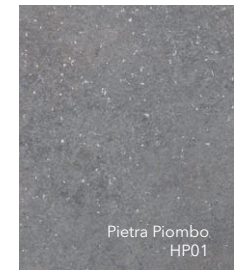
Marmo Bianco
HP04



Pietra Calce
HP02



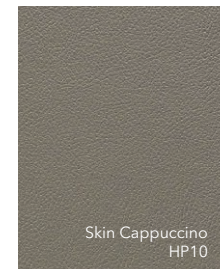
Skin Latte
HP09



Pietra Piombo
HP01



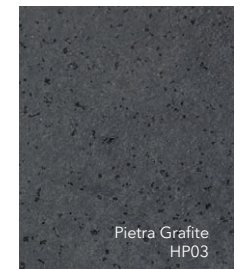
Penelope Cappuccino
HP07



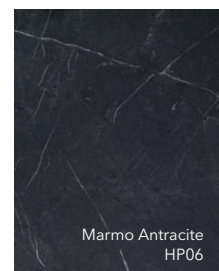
Skin Cappuccino
HP10



Marmo Grigio
HP05



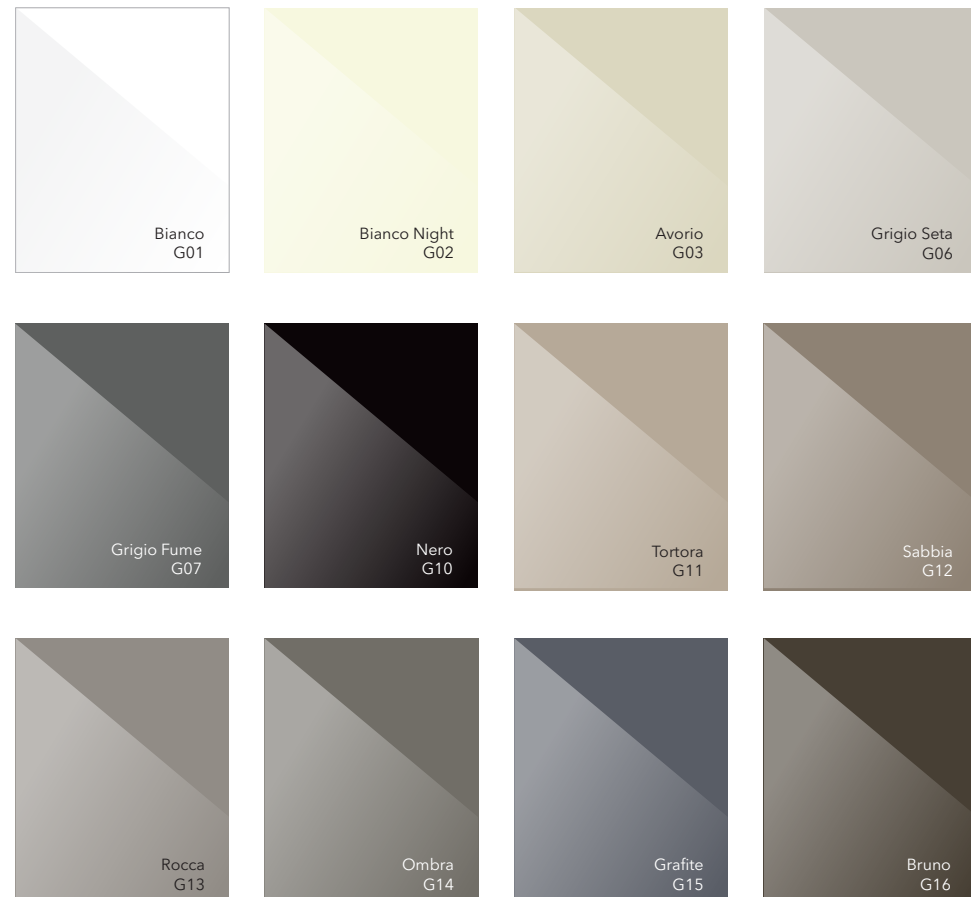
Pietra Grafite
HP03



Marmo Antracite
HP06

GLASS 

Glossy glass. Painting on specialized equipment in production conditions.

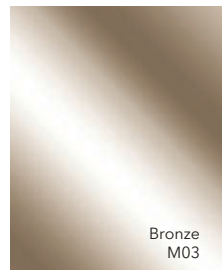
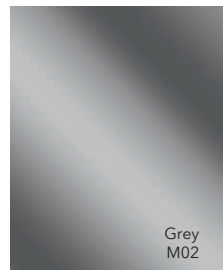
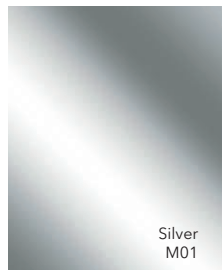


GLASS MATT 

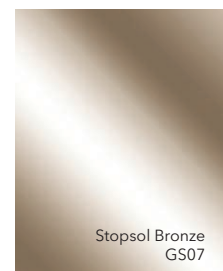
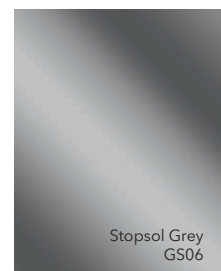
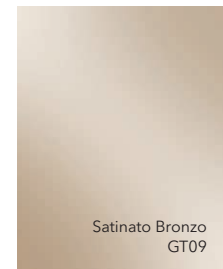
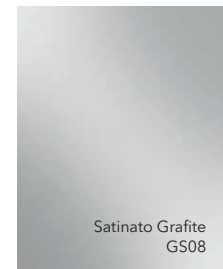
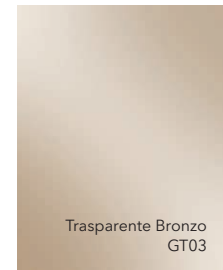
Frosted glass. Painting on specialized equipment in production conditions.



MIRROR 
Colored mirrors

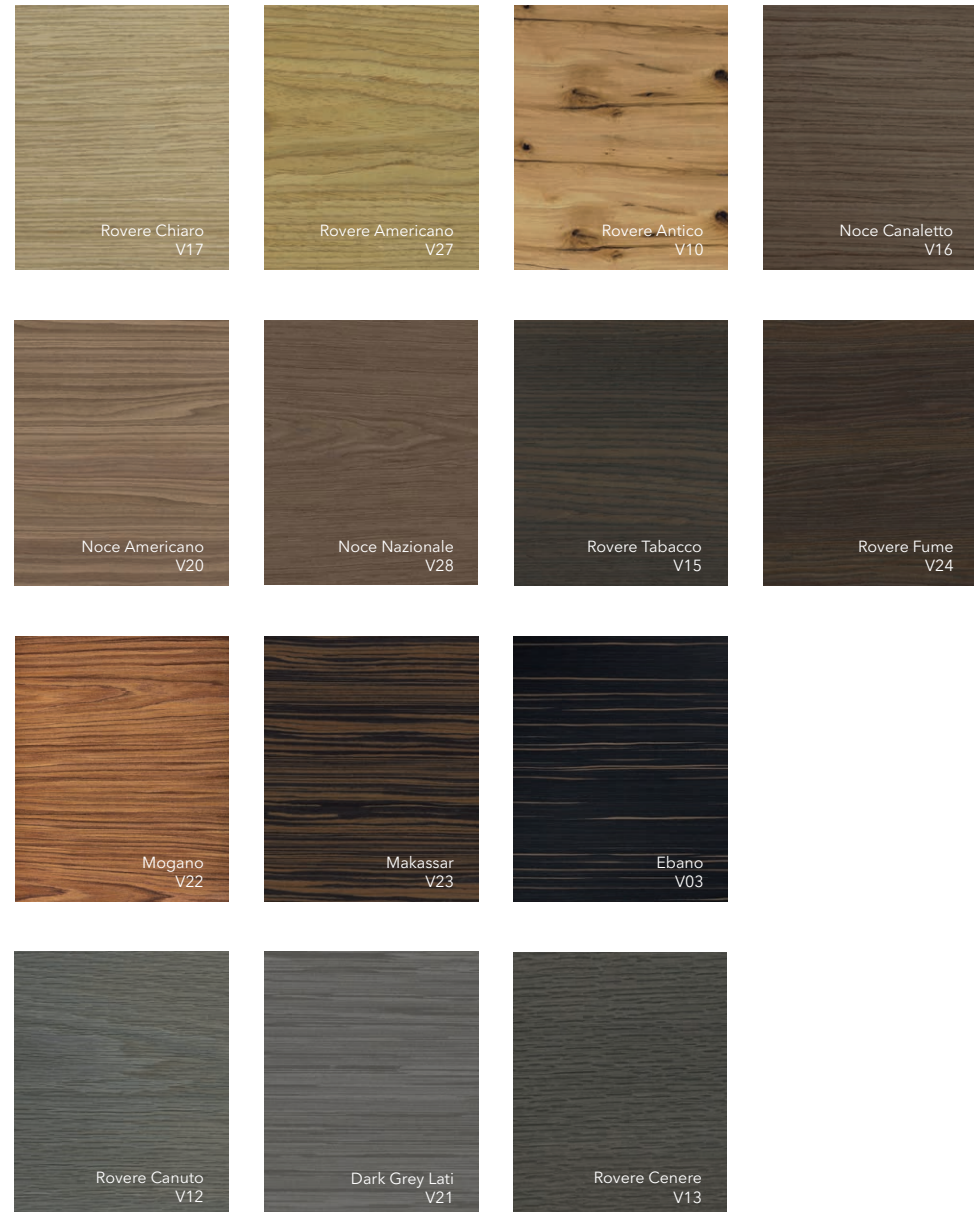


TRANSPARENT & SATIN GLASS 
Translucent safety glass with decorative effects



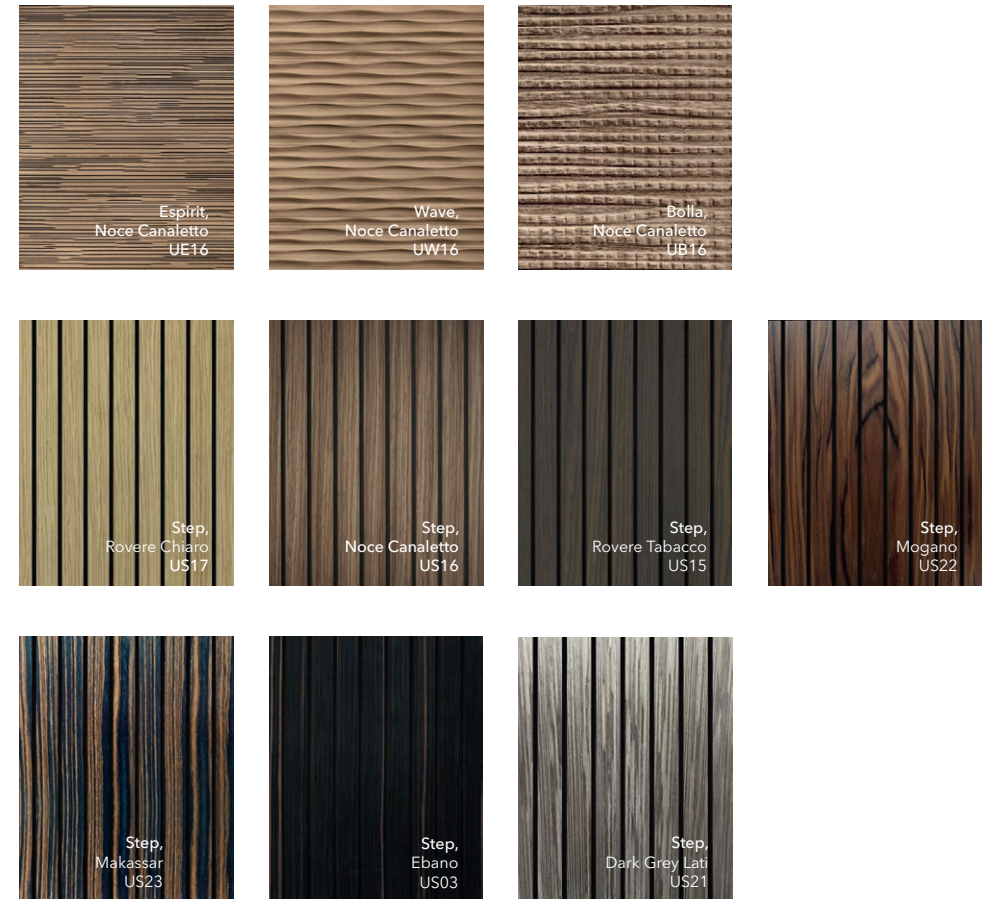
VENEER NATURAL 

Natural wood veneer with open pores matt lacquer finish

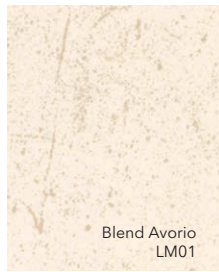


UNIFLEX-3D 

3D milling on solid lamella and relief pattern on natural veneer



LAMINAM 
Ceramic panel



Blend Avorio
LM01



Fokos Sale
LM13



Fokos Terra
LM14



Pietra Grigio
LM24



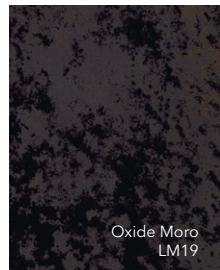
Pietra Grey
LM23



Fokos Piombo
LM11



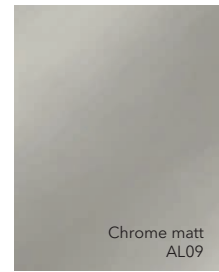
Pietra Antracite
LM21



Oxide Moro
LM19

ALUMINIUM 

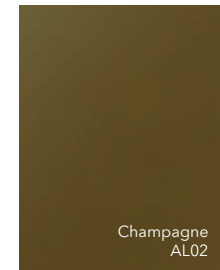
AL09 - high quality anodised electrochemical coating.
AL02 - AL08. Polymer powder (made in Italy) coating in electrostatic field



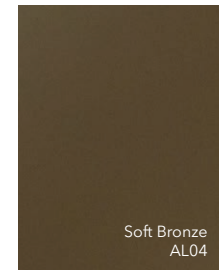
Chrome matt
AL09



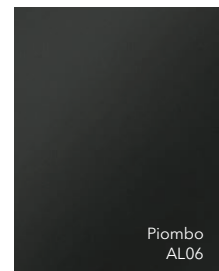
Soft Gold
AL03



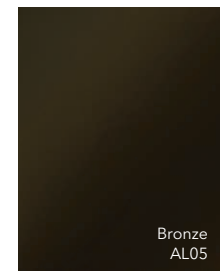
Champagne
AL02



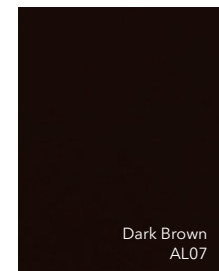
Soft Bronze
AL04



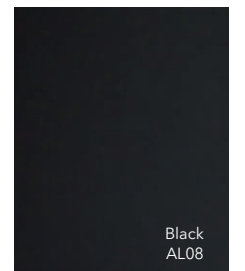
Piombo
AL06



Bronze
AL05



Dark Brown
AL07



Black
AL08

PORTOFINO TEXTILE

Durable, abrasion-resistant fabrics

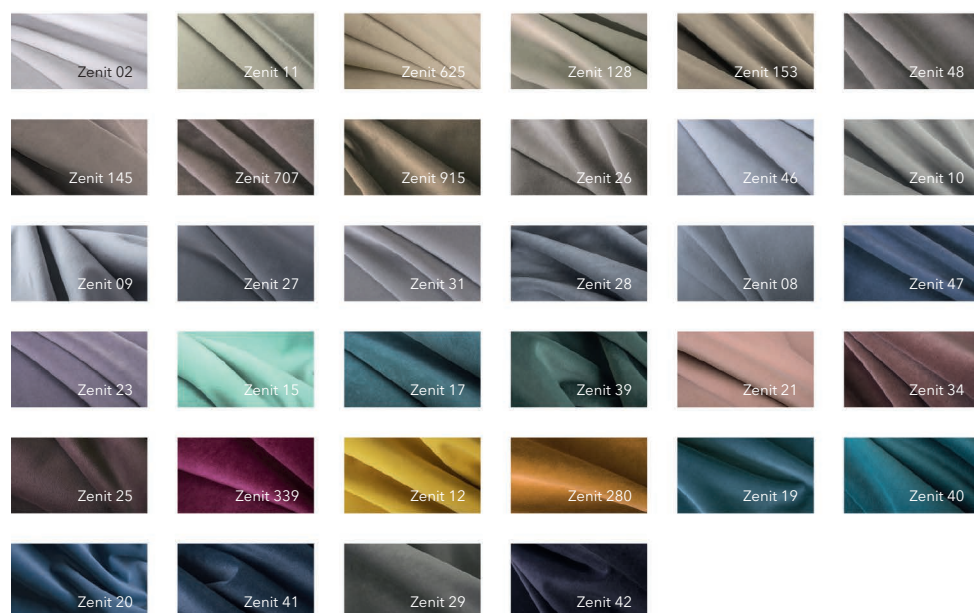
PIANO



VERONA



ZENIT



Via Flavio Baracchini, 2 - 20100 Milano (Italia)
 +39 388 9532054 | +7 915 1557851
 info@unionporte.it
 www.unionporte.it



UNION reserves the right to make changes that do not impair quality to the products presented in this catalog at any time without prior notice. The company is not responsible for incomplete similarity between the originals and the samples in the catalog. Colors and finishes shown in the sample catalog may differ from the original. For more detailed information or to get acquainted with real samples of color solutions / finishes, we recommend contacting the showrooms of the company.

Instagram uniondoors
 Pinterest uniondoors
 Archiproducts union

+39 388 9532054
info@unionporte.it
www.unionporte.it